

SUN CONEC
-Singapore & Malaysia-

Advanced Fiber Connectivity

EDITION 1.0

Make Connections Much Simpler

COMPANY PROFILE

SUN CONEC is a global leading supplier of optical communication components, specializing in the research, development, and manufacturing of ceramic ferrules, ceramic sleeves, fiber optic patch cords, MPO patch cords, and PLC splitters. Our products are widely used in FTTX and data center communications, as well as in the fields of lasers, medical equipment, aerospace, and quantum technology.

We have sales offices in Singapore and Japan, along with three major manufacturing bases located in Johor, Malaysia, and Zhejiang and Hunan in China, covering a total area of 450,000 square feet. With a well-established global supply chain, SUN CONEC serves key optical communication markets across East Asia, North America, Europe, and South Asia, offering one-stop optical connectivity solutions to customers worldwide.

Driven by continuous technological innovation and rigorous quality control, SUN CONEC has developed a range of industry-leading optical communication products and established a comprehensive global service system. We are committed to innovation-led growth and dedicated to delivering high-reliability, high-performance optical connectivity solutions to customers around the world.

We provide fiber-optic solutions in your industry



FTTX systems



Data Center



Quantum



Medical



PON Network



Laser



Test Equipment

Why choose us

- ✓ Much shorter turnaround time
- ✓ More reliable quality assurance
- ✓ OEM/ODM services
- ✓ For competitive pricing
- ✓ One-stop solution to facilitate your procurement

About Us

Up to **300,000,000** ceramic ferrules per year

Close to **500,000,000** square feet operation area

Our products are **100%** tested and verified

More than **10 years** experience in optical communication industry

Nearly **30,000,000** fiber-optic patch cords per year

More than **100 patents** acquired in innovative spirit

01 ZIRCONIACERAMIC FERRULE

- Standard SC/UPC and SC/APC
- Standard SC/APC (STEP), SC Flange
- Standard LC and MU
- LC Flange
- Premium Ferrule Series
- Customized Ferrule
- Zirconia Sleeves
- MT Ferrule

02 SINGLE-FIBER PATCH CORD

- Connector Performance
- Standard Patch Cable Structure
- SC Connectors
- FC Connectors
- ST Connectors
- LSH Connectors
- LC Connectors
- LC/Uniboot Connectors
- MTRJ Connectors
- SN Connectors
- MDC Connectors
- LC-Whoosh Connectors
- LC-ENT Connectors
- Weatherproof Connectors
- Indoor Fan-Out Kit Connectors
- Outdoor Fan-Out Kit Connectors

03 MULTI-FIBER PATCH CORD

- Connector Performance
- Standard Patch Cable Structure
- MPO Connectors
- MPO (Push-Pull) Connectors
- SN-MT Connectors
- MMC Connectors
- MPO-LC (24-Core) Connectors
- MPO-LC/Uniboot (24-Core) Connectors

04 FAST FIBER CONNECTOR

- SC Fast Fiber Connectors
- LC Fast Fiber Connectors
- FC Fast Fiber Connectors
- Hot Melt Connectors
- Optical Fiber Cold Splice
- Waterproof Connector Series

05 TERMINAL BOX

- Plastic Splitter Box

Zirconiaceramic Ferrule

▪ Standard SC/UPC and SC/APC	pg.01
▪ Standard SC/APC (STEP), SC Flange	pg.02
▪ Standard LC and MU	pg.03
▪ LC Flange	pg.04
▪ Premium, Super Premium, Ultra Premium	pg.05
▪ Customized Ferrule	pg.06
▪ Zirconia Sleeves	pg.07
▪ MT Ferrule	pg.08

SC/UPC ZIRCONIA FERRULE



SC/UPC Ferrule With Flange

SPECIFICATION

DESCRIPTION	SM	MM
Material	Zirconia	
Outer Diameter(mm)	$\Phi 2.499 \pm 0.0005$	$\Phi 2.499 \pm 0.0010$
Concentricity(mm)	≤ 0.0010	≤ 0.0040
Ferrule Length(mm)	10.5 ± 0.05	

CODE STANDARDS

SP-5363-05-FP

TYPE		ID Range(μm)		Concentricity		Flange	
SP	SC/PC	5055	125.0-125.5	03	0.3 μm	FP	SC/PC Flange
		5257	125.2-125.7	05	0.5 μm	<input checked="" type="checkbox"/>	Without Flange
		5363	125.3-126.3	10	1.0 μm		
		5565	125.5-126.5	14	1.4 μm		
		6070	126.0-127.0	40	4.0 μm		
		6090	126.0-129.0				

Note: Customized flange slot width and length are available upon request.

Performance:

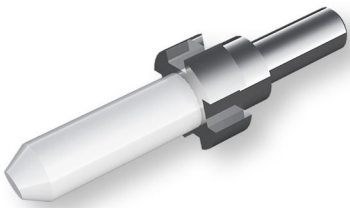
- The product complies with RoHS requirements.
- Salt mist resistance:
48h salt mist test duration \leq 168h (IEC 61300-2-26)
- Ferrule hardness: $> 1200\text{HV}$
- Ferrule density: $\geq 6.0 \text{ g/cm}^3$
- Ferrule bending strength: $> 1200 \text{ MPa}$
- Ferrule-to-tailstock retention: $> 7\text{kgf}$
- The ferrule passed the 85°C/85% RH test for 2000 hours
- The ferrule passed the aging test at 140°C for 24 hours

SC/UPC Ferrule

ZIRCONIACERAMIC FERRULE

01

SC/APC ZIRCONIA FERRULE



SC/APC Ferrule With Flange

SPECIFICATION

DESCRIPTION	SM	MM
Material	Zirconia	
Outer Diameter(mm)	$\Phi 2.499 \pm 0.0005$	$\Phi 2.499 \pm 0.0010$
Concentricity(mm)	≤ 0.0010	≤ 0.0040
Ferrule Length(mm)	10.5 ± 0.05	
Bevel angle degree($^{\circ}$)	$30^{\circ}/35^{\circ}/45^{\circ}$	

CODE STANDARDS

SA-5363-05-FA

TYPE		ID Range(μm)		Concentricity		Flange	
SA	SC/APC	5055	125.0-125.5	03	0.3 μm	FA	SC/APC Flange
		5257	125.2-125.7	05	0.5 μm	<input checked="" type="checkbox"/>	Without Flange
		5363	125.3-126.3	10	1.0 μm		
		5565	125.5-126.5	14	1.4 μm		
		6070	126.0-127.0	40	4.0 μm		
		6090	126.0-129.0				

Note: Customized flange slot width and length are available upon request.

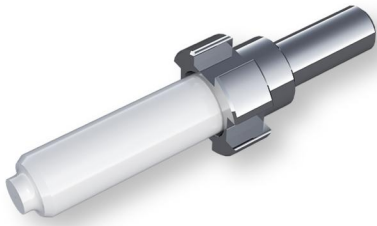
Performance:

- The product complies with RoHS requirements.
- Salt mist resistance:
48h salt mist test duration \leq 168h (IEC 61300-2-26)
- Ferrule hardness: $> 1200\text{HV}$
- Ferrule density: $\geq 6.0 \text{ g/cm}^3$
- Ferrule bending strength: $> 1200 \text{ MPa}$
- Ferrule-to-tailstock retention: $> 7\text{kgf}$
- The ferrule passed the 85°C/85% RH test for 2000 hours
- The ferrule passed the aging test at 140°C for 24 hours

SC/APC Ferrule

SC/APC (STEP) ZIRCONIA FERRULE

SPECIFICATION



DESCRIPTION	SM	MM
Material	Zirconia	
Outer Diameter(mm)	$\Phi 2.499 \pm 0.0005$	$\Phi 2.499 \pm 0.0010$
Concentricity(mm)	≤ 0.0010	≤ 0.0040
Ferrule Length(mm)	10.5 ± 0.05	

CODE STANDARDS

ST-5363-05-FA

SC/STEP Ferrule With Flange

TYPE	ID Range(μm)	Concentricity	Flange
ST SC/APC (STEP)	5055 125.0-125.5	03 0.3 μm	FA SC/APC Flange
	5257 125.2-125.7	05 0.5 μm	<input checked="" type="checkbox"/> Without Flange
	5363 125.3-126.3	10 1.0 μm	
	5565 125.5-126.5	14 1.4 μm	
	6070 126.0-127.0	40 4.0 μm	
	6090 126.0-129.0		



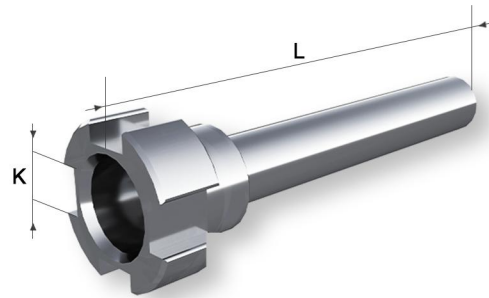
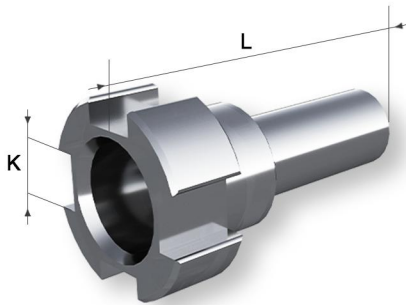
Note: Customized flange slot width and length are available upon request.

Performance:

- The product complies with RoHS requirements.
- Salt mist resistance: 48h salt mist test duration $\leq 168\text{h}$ (IEC 61300-2-26)
- Ferrule hardness: $> 1200\text{HV}$
- Ferrule density $\geq 6.0 \text{ g/cm}^3$
- Ferrule bending strength: $> 1200 \text{ MPa}$
- Ferrule-to-tailstock retention $> 7\text{kgf}$
- The ferrule passed the $85^\circ\text{C}/85\% \text{ RH}$ test for 2000 hours
- The ferrule passed the aging test at 140°C for 24 hours

SC/APC (STEP) Ferrule

SC FERRULE FLANGE



L=Length Parameter K=Aperture Parameter

SC Flange Dimensional Specifications

K	L	8.05 (mm)	15.4 (mm)
$1.27^{+0.05}_0$ (mm)		FS	FSL
$1.30^{+0.05}_0$ (mm)		FN	FNL
1.35 ± 0.05 (mm)		FA	FAL
$1.50^{+0.1}_0$ (mm)		FP	FPL

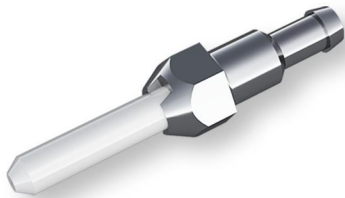
Notes:

1. The Flange length and slot width can be customized according to customer requirements.
2. The Flange material can be selected as nickel-plated Copper or SUS303Cu.

LC ZIRCONIA FERRULE



LC Ferrule With Flange



LC Ferrule With Slotted Flange



LC Ferrule

SPECIFICATION

DESCRIPTION	SM	MM
Material	Zirconia	
Outer Diameter(mm)	$\Phi 1.249 \pm 0.0005$	
Concentricity(mm)	≤ 0.0010	≤ 0.0040
Ferrule Length(mm)	$6.4_{0}^{+0.1}$	

CODE STANDARDS

LC-5363-03-FL

TYPE	ID Range(μm)	Concentricity	Flange
LC LC Ferrule	5055 125.0-125.5	03 0.3 μm	FL LC Ferrule With Flange
	5257 125.2-125.7	05 0.5 μm	FLK LC Ferrule With Slotted Flange
	5363 125.3-126.3	10 1.0 μm	<input checked="" type="checkbox"/> Without Flange
	5565 125.5-126.5	14 1.4 μm	
	6070 126.0-127.0	40 4.0 μm	
	6090 126.0-129.0		

Note: Customized flange slot width and length are available upon request.

Performance:

- The product complies with RoHS requirements.
- Salt mist resistance:
48h salt mist test duration \leq 168h (IEC 61300-2-26)
- Ferrule hardness: $> 1200\text{HV}$
- Ferrule density $\geq 6.0 \text{ g/cm}^3$
- Ferrule bending strength: $> 1200 \text{ MPa}$
- Ferrule-to-tailstock retention $> 5\text{kgf}$
- The ferrule passed the 85°C/85% RH test for 2000 hours
- The ferrule passed the aging test at 140°C for 24 hours

MU ZIRCONIA FERRULE

SPECIFICATION

DESCRIPTION	SM	MM
Material	Zirconia	
Outer Diameter(mm)	$\Phi 1.249 \pm 0.0005$	$\Phi 1.249 \pm 0.001$
Concentricity(mm)	≤ 0.0010	≤ 0.0040
Ferrule Length(mm)	$6.4_{0}^{+0.1}$	

CODE STANDARDS

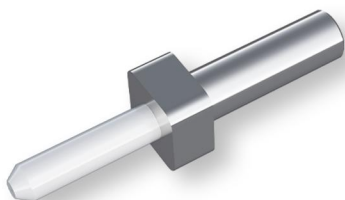
MU-5363-05-FM

TYPE	ID Range(μm)	Concentricity	Flange
MU MU Ferrule	5055 125.0-125.5	03 0.3 μm	FM MU Ferrule With Flange
	5257 125.2-125.7	05 0.5 μm	FML MU Ferrule With Slotted Flange
	5363 125.3-126.3	10 1.0 μm	
	5565 125.5-126.5	14 1.4 μm	
	6070 126.0-127.0	40 4.0 μm	
	6090 126.0-129.0		

Note: Customized flange slot width and length are available upon request.

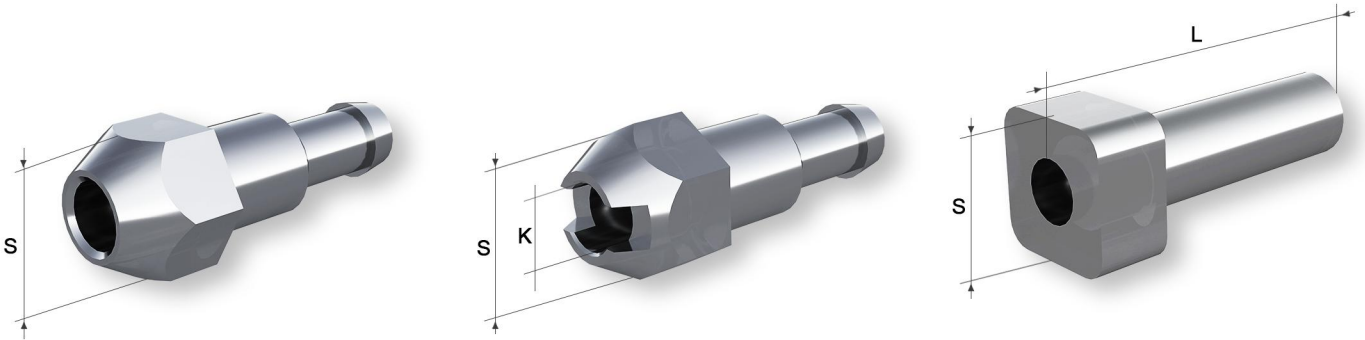
Performance:

- The product complies with RoHS requirements.
- Salt mist resistance:
48h salt mist test duration \leq 168h (IEC 61300-2-26)
- Ferrule hardness: $> 1200\text{HV}$
- Ferrule density $\geq 6.0 \text{ g/cm}^3$
- Ferrule bending strength: $> 1200 \text{ MPa}$
- Ferrule-to-tailstock retention $> 5\text{kgf}$
- The ferrule passed the 85°C/85% RH test for 2000 hours
- The ferrule passed the aging test at 140°C for 24 hours



MU Ferrule With Flange

LC FERRULE FLANGE



L=Length Parameter S=Flat-to-flat dimension

LC Flange Dimensional Specifications

s \ K	Non-Slotted	Slotted (K=0.79mm)
2.54±0.05 (mm)	FL	FLK
2.65±0.05 (mm)	FW	FWK

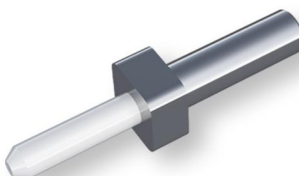
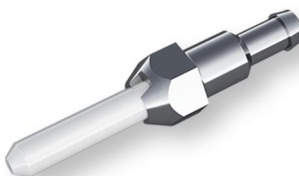
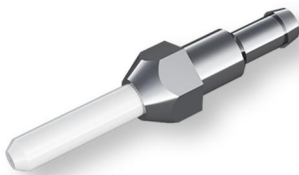
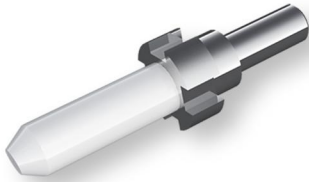
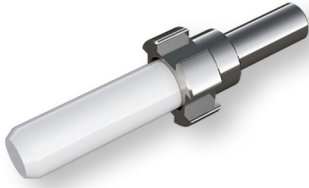
MU Flange Dimensional Specifications

s \ L	5.5mm	7mm
2.78 ^{+0.1} _{0.05} (mm)	FM	FML
2.6 ^{+0.1} _{0.05} (mm)	FU	FUL

Notes:

1. The tail handle length and slot width can be customized according to customer requirements.
2. The tail handle material can be selected as nickel-plated Copper or SUS303Cu.

PREMIUM



Performance:

- Attenuation grade of Grade B (untuned): $\leq 0.12\text{dB}$ mean, $\leq 0.25\text{dB}$ max, for $\geq 97\%$ of the connections.

SPECIFICATION

DESCRIPTION	SC	LC
Material	Zirconia	
Outer Diameter(mm)	$\Phi 2.499 \pm 0.0003$	$\Phi 1.249 \pm 0.0003$
Concentricity(mm)	≤ 0.0005	
Ferrule Length(mm)	10.5 ± 0.05	$6.4^{+0.1}_0$

- Note: 1. The premium ferrule maintains $\leq 0.3\mu\text{m}$ concentricity for $200\mu\text{m}$ fiber cores, achieving ultra-precision alignment standards.
2. Grade B is defined in IEC i61753-1.*

SUPER PREMIUM

Performance:

- Attenuation grade of Grade B: $\leq 0.07\text{dB}$ mean, $\leq 0.15\text{dB}$ max, for $\geq 97\%$ of the connections.

SPECIFICATION

DESCRIPTION	SC	LC
Material	Zirconia	
Outer Diameter(mm)	$\Phi 2.499 \pm 0.0002$	$\Phi 1.249 \pm 0.0002$
Concentricity(mm)	≤ 0.0003	
Ferrule Length(mm)	10.5 ± 0.05	$6.4^{+0.1}_0$

- Note: 1. The super premium ferrule maintains $\leq 0.3\mu\text{m}$ concentricity for $200\mu\text{m}$ fiber cores, achieving ultra-precision alignment standards.
2. Grade A* is not defined in IEC standards.*

ULTRA PREMIUM

Performance:

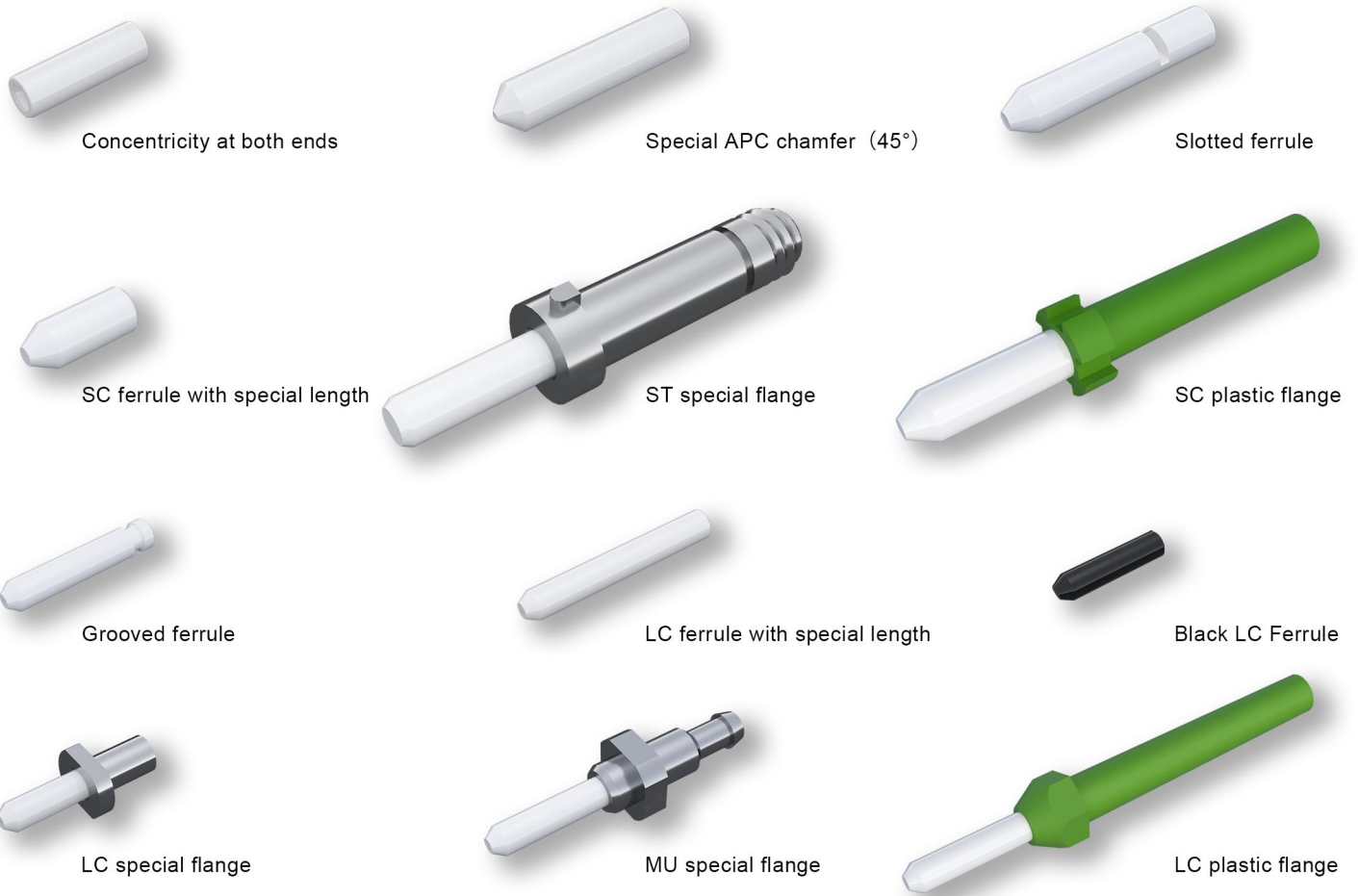
- Attenuation grade of Grade B: $\leq 0.05\text{dB}$ mean, $\leq 0.10\text{dB}$ max, for $\geq 97\%$ of the connections.

SPECIFICATION

DESCRIPTION	SC	LC
Material	Zirconia	
Outer Diameter(mm)	$\Phi 2.499 \pm 0.0002$	$\Phi 1.249 \pm 0.0002$
Concentricity(mm)	≤ 0.00015	
Ferrule Length(mm)	10.5 ± 0.05	$6.4^{+0.1}_0$

- Note: 1. The ultra premium ferrule maintains $\leq 0.15\mu\text{m}$ concentricity for $200\mu\text{m}$ fiber cores, achieving ultra-precision alignment standards.
2. Grade A*+ is not defined in IEC standards.*

CUSTOMIZED FERRULE



ZIRCONIACERAMIC FERRULE

06

Outer diameter	0.18mm-3.0mm
Inner diameter	50µm-500µm
Concentricity	minimum 0.15µm
Slotting	a variety of customized sizes
Chamfering	a variety of customized sizes
Length	2.0mm-13mm

Note: Inner diameter tolerance: $\pm 0.5\mu\text{m}$ (default), customizable based on customer's fiber outer diameter.



Aerospace



Medical



Data Center



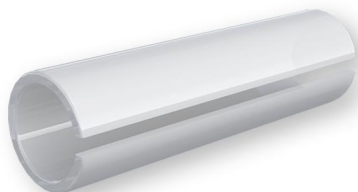
FTTX systems



Test Equipment

STANDARD SLEEVES

SPECIFICATION



SC sleeves

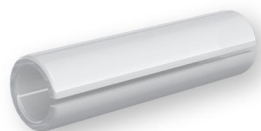
DESCRIPTION	ST	SC	LC
Material	Zirconia		
Withdrawal Force (gf)	200-600		100-250
Insertion Loss	Max 0.5dB, 0.1dB typical or better		
Durability	<0.02dB deviation after 1000 matings & temp cycling		
Outer Diameter (mm)	3.2±0.02		1.62±0.01
Inner Diameter (mm)	(2.49)		(1.246)
Length (mm)	10.1±0.1	11.4±0.1	6.8 ⁰ _{-0.1}
Slit Width (mm)	Max 0.5 ± 0.01		Max 0.2 ± 0.01
Chamfer	2 x R0.1		

Note: For Zirconia Sleeves ST, SC, FC, LC and MU.

Performance:

- Zirconia sleeves and tubes are precision manufactured according to strict quality and performance standards. They are available for singlemode and multimode applications. Reliable mating is assured with strictly controlled.
- Dimensions and withdrawal force. Standard styles for FC include SC, FC, ST, D4, LC and MU, with custom designs also available. Diagonal split sleeves are available for superior durability requirements. Tubes are also available.

CODE STANDARDS



LC sleeves

ZRS-25-101

SLEEVE CODE	INNER DIAMETER	LENGTH
ZRS Straight Split Sleeve	25 (2.49)mm	101 10.1mm ST
		114 11.4mm SC & FC

- Note:** 1. Outer diameter and inner diameter dimensions are for reference only and should be adjusted to the required withdrawal force as specified.
2. Custom configurations and dimensions are available upon request.

ZRS-12-680

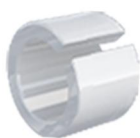
SLEEVE CODE	INNER DIAMETER	LENGTH
ZRS Straight Split Sleeve	12 (1.25)mm	680 6.8mm for LC/MU

- Note:** 1. Outer diameter and inner diameter dimensions are for reference only and should be adjusted to the required withdrawal force as specified.
2. Custom configurations and dimensions are available upon request.

NON STANDARD SLEEVES



SC Non-Standard Sleeve, 5.0mm



SC Non-Standard Sleeve, 2.5mm



LC Non-Standard Sleeve, 4.9mm



LC Non-Standard Sleeve, 4.5mm



LC Non-Standard Sleeve, 4.0mm

MT ZIRCONIA FERRULE

Fiber Type:Single-Mode Elite



MT Ferrule with boot, 12F, Single-mode, MT Elite, Pre-Angled, Dimple



MT Ferrule with boot, 24F, Single-mode, MT Elite, Pre-Angled, Dimple, 9.8N



MT Ferrule with boot, 24F, Single-mode, MT Elite, Pre-Angled, Dimple, 9.8N

Performance:

- <= 12Fibers per row
- 0.7mm guide pins; 4.6mm guide pin pitch
- High Density; fiber pitch: 0.25mm
- Highly glass filled for dimensional stability and stable environmental performance
- Low hygroscopic PPS material for stable environmental performance
- Low insertion loss optimized for 40G, 100G and 400G link applications
- Standards Compliance IEC 61754-5
- Standards Compliance IEC 61754-7-1; 61754-7-2
- Standards Compliance TIA 604-5

Fiber Type:Single-Mode



MT Ferrule with boot, 12F, Single-mode, Pre-Angled, 80 um

Performance:

- <= 12Fibers per row
- 0.7mm guide pins; 4.6mm guide pin pitch
- High Density; fiber pitch: 0.25mm
- Highly glass filled for dimensional stability and stable environmental performance
- Low hygroscopic PPS material for stable environmental performance
- Low insertion loss optimized for 40G, 100G and 400G link applications
- Standards Compliance IEC 61754-5
- Standards Compliance IEC 61754-7-1; 61754-7-2
- Standards Compliance TIA 604-5

Fiber Type:Multimode Elite



MT Ferrule with boot, 12F, Multimode, MT Elite, Dimple



MT Ferrule with boot, 12F, Multimode, MT Elite, Dimple

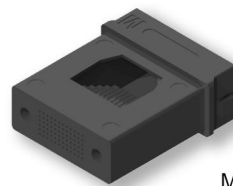
Performance:

- <= 12Fibers per row
- 0.7mm guide pins; 4.6mm guide pin pitch
- High Density; fiber pitch: 0.25mm
- Highly glass filled for dimensional stability and stable environmental performance
- Low hygroscopic PPS material for stable environmental performance
- Low insertion loss optimized for 40G, 100G and 400G link applications
- Standards Compliance IEC 61754-5
- Standards Compliance IEC 61754-7-1; 61754-7-2
- Standards Compliance TIA 604-5

Fiber Type:Multimode Elite



MT Ferrule with boot, 48F, Multimode, PPS



MT Ferrule, 72F, Multimode, PPS

Performance:

- <= 12Fibers per row
- 0.7mm guide pins; 4.6mm guide pin pitch
- High Density; fiber pitch: 0.25mm
- Highly glass filled for dimensional stability and stable environmental performance
- Low hygroscopic PPS material for stable environmental performance
- Low insertion loss optimized for 40G, 100G and 400G link applications
- Standards Compliance IEC 61754-5
- Standards Compliance IEC 61754-7-1; 61754-7-2
- Standards Compliance TIA 604-5

Single-Fiber Patch Cord

▪ Connector performance	pg.09
▪ Product Naming,Standard Patch Cable Structure	pg.10-11
▪ SC Connectors and SC Ordering Information (Simplex/Duplex)	pg.12-13
▪ FC Connectors and Product Selection	pg.14
▪ ST Connectors and Product Selection	pg.15
▪ LSH Connectors and Product Selection	pg.16
▪ LC Connectors and LC Ordering Information (Simplex/Duplex)	pg.17-18
▪ LC/Uniboot Connectors and Product Selection	pg.19-20
▪ MTRJ Connectors and Product Selection	pg.21
▪ SN Connectors and Product Selection	pg.22-23
▪ MDC Connectors and Product Selection	pg.24-25
▪ LC-Whoosh Connectors and Product Selection	pg.26
▪ LC-ENT Connectors and Product Selection	pg.27
▪ Weatherproof Connectors and Product Selection	pg.28
▪ Indoor Fan-Out Kit Connectors and Product Selection	pg.29
▪ Outdoor Fan-Out Kit Connectors and Product Selection	pg.30

Insertion Loss (IL) and Return Loss (RL)

	Optical Performance	APC	UPC
Standard	IL (dB)	0.25	0.25
Low Insertion Loss		0.15	0.15
Standard	RL (dB)	60	50
High Return Loss		65	55

Random Mated

Attenuation Grades	Description	Test method
Grade A** (Undefined in IEC)	≤0.05dB mean, ≤0.10dB max, for ≥97% of connections	IEC 61300-3-34 method1
Grade A* (Undefined in IEC)	≤0.07dB mean, ≤0.15dB max, for ≥97% of connections	IEC 61300-3-34 method1
Grade B	≤0.12dB mean, ≤0.25dB max, for ≥97% of connections	IEC 61300-3-34 method1

Fiber Endface Geometry Comparison

Parameter	APC	UPC
Radius (mm)	5~12	10~25
Apex Offset (μm)	0~50	0~50
Fiber Height (mm)	-100~+50	-100~+50
Angle Deviation (°)	7.7~8.3	N/A
Key Angle (°)	±0.3	N/A

OPTICAL PATCHCORD

SCU-SCA-C01-009-Z-B

A-SIDE CONNECTOR TYPE		B-SIDE CONNECTOR TYPE		CORE COUNT		OUTER DIAMETER		MATERIALS		OPTICAL FIBER TYPE	
SCU	SC/UPC	SCU	SC/UPC	C01	simplex	O09	0.9mm	Z	LSZH	A	G652D
SCA	SC/APC	SCA	SC/APC	C02	duplex	O12	1.2mm	V	PVC	B	G657A1
SCT	SC/APC(step)	SCT	SC/APC(step)	C04	4-core	O16	1.6mm	N	Nylon	C	G657A2
FCU	FC/UPC	FCU	FC/UPC	C08	8-core	O20	2.0mm	E	PE	D	G657B3
FCA	FC/APC	FCA	FC/APC	C12	12-core	O30	3.0mm	H	Hytrel	E	G655
STU	ST/UPC	STU	ST/UPC	C24	24-core			U	PU	F	OM1
STA	ST/APC	STA	ST/APC	C48	48-core			B	PBT	G	OM2
LCU	LC/UPC	LCU	LC/UPC		...			T	TPE	H	OM3-150
LCA	LC/APC	LCA	LC/APC							J	OM3-300
UN	UNIBOOT	UN	UNIBOOT							K	OM4
LSH	LSH	LSH	LSH							L	OM5

Note: Custom lengths available to meet your requirements.

STANDARD PATCH CORD STRUCTURE

LC-TYPE FIBRE OPTIC CONNECTOR PATCH CORD



SC-TYPE FIBRE OPTIC CONNECTOR PATCH CORD



FC-TYPE FIBRE OPTIC CONNECTOR PATCH CORD



ST-TYPE FIBRE OPTIC CONNECTOR PATCH CORD



STANDARD PATCHCORD STRUCTURE

LSH-TYPE FIBRE OPTIC CONNECTOR PATCH CORD



LSH-LSH



LSH-LC



LSH-SC



LSH-ST



LSH-FC

DUPLEX FIBER OPTIC PATCH CORD



LC-LC



SC-SC



FC-FC



ST-ST



LSH-LSH

FIBER TYPE



SM
recommended Yellow



OM1/OM2
recommended Orange



OM3
recommended Aqua



OM4
recommended Violet



OM5
recommended Lime Green

COMMON CABLE STRUCTURES

SINGLE-CORE CABLE SERIES



2.0/3.0mm simplex cable



2.0/3.0mm simplex
armoured optical cable



2.0/3.0mm min cable
(2 fibers)

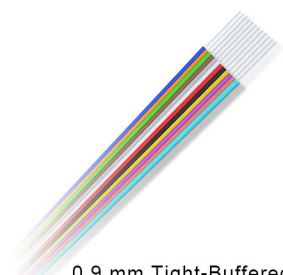
DUAL-CORE CABLE SERIES



2.0/3.0mm duplex
optical cable



2.0/3.0mm duplex
armoured fibre optic cable

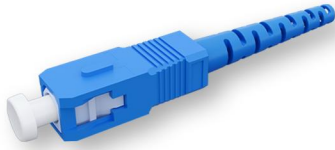


0.9 mm Tight-Buffered
Fiber Cable with 12-color code

SC CONNECTOR

CODE STANDARDS

SCU-BU-D20-GN



SC/UPC Connector



SC/APC Connector

CONNECTOR	ENCLOSURE COLOR	BOOT TYPE(mm)	BOOT COLOR
SCU SC/UPC Simplex Connector	BU BLUE	D09 0.9 standard	GN GREEN
SCA SC/APC Simplex Connector	GN GREEN	D20 2.0 standard	BU BLUE
DSCU SC/APC Duplex Connector	BG BEGI	S20 2.0 Short Tail Boot	BG BEGI
DSCA SC/UPC Duplex Connector	AQ AQUA	D30 3.0 standard	AQ AQUA
	VT VIOLET	S30 3.0 Short Tail Boot	VT VIOLET
	LM LIME GREEN	D16 1.6 standard	LM LIME GREEN
		D12 1.2 standard	

Performance:

- Sun Conec's connectors strictly follow the test standards of Telcordia GR-326-CORE
- Designed to exceed the requirements of Verizon FOCTPR 9409
- The dimensional design complies with IEC 61754-4
- Can be selected according to the material to meet the UL94 flame retardant standards
- The use of our different ferrule types (Premium, Super Premium, Ultra Premium) enables performance matching from standard to high and ultra-high performance interconnection requirements
- Insertion/return loss performance not only exceeds the top 10% of industry benchmarks, but also far exceeds the performance requirements of the Grade B interchange test in the IEC 61753-1 standard

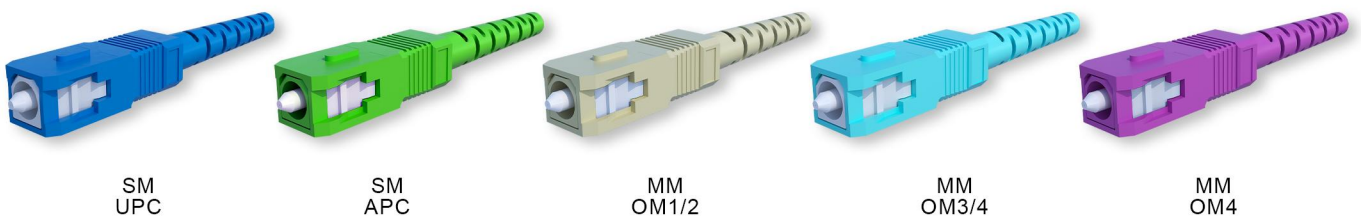
PRODUCT SELECTION (SIMPLEX)

ADAPTED CABLE OD	BOOT TYPE	PICTURE	ENGINEERING DRAWING
0.9mm Simplex	Standard Boot		
1.2mm Simplex	Standard Boot		
1.6mm Simplex	Standard Boot		
2.0mm Simplex	Standard Boot		
3.0mm Simplex	Standard Boot		
2.0/3.0mm Simplex	45° Angle		

PRODUCT SELECTION (DUPLIX)

ADAPTED CABLE OD	BOOT TYPE	PICTURE	ENGINEERING DRAWING
0.9mm Simplex	Standard Boot		
1.2mm Simplex	Standard Boot		
1.6mm Simplex	Standard Boot		
2.0mm Simplex	Standard Boot		
3.0mm Simplex	Standard Boot		
2.0/3.0mm Duplex	45° Angle		
2.0/3.0mm Duplex	90° Angle		

COLOR RECOMMENDATION



SM
UPC

SM
APC

MM
OM1/2

MM
OM3/4

MM
OM4

FC CONNECTOR

CODE STANDARDS

FC/UPC-MT-D09-GN



FC-APC Connector



FC-UPC Connector



2.0mm Standard Boot

CONNECTOR		ENCLOSURE COLOR		BOOT TYPE(mm)		BOOT COLOR	
FC/UPC	FC/UPC Connector	ZA	ZINC ALLOY	D09	0.9 standard	GN	GREEN
FC/APC	FC/APC Connector	CO	COPPER	D12	1.2 standard	BU	BLUE
				D16	1.6 standard	BG	BEGI
				D20	2.0 standard	AQ	AQUA
				D30	3.0 standard	BK	BLACK
				D46	4.6 standard		

Performance:

- Sun Conec's connectors strictly follow the test standards of Telcordia GR-326-CORE
- Designed to exceed the requirements of Verizon FOCTPR 9409
- The dimensional design complies with IEC 61754-13
- Can be selected according to the material to meet the UL94 flame retardant standards
- The use of our different ferrule types (Premium, Super Premium, Ultra Premium) enables performance matching from standard to high and ultra-high performance interconnection requirements
- Insertion/return loss performance not only exceeds the top 10% of industry benchmarks, but also far exceeds the performance requirements of the Grade B interchange test in the IEC 61753-1 standard.

PRODUCT SELECTION

ADAPTED CABLE OD	BOOT TYPE	PICTURE	ENGINEERING DRAWING
0.9mm Simplex	Standard Boot		
2.0mm Simplex	Standard Boot		
3.0mm Simplex	Standard Boot		

ST CONNECTOR

CODE STANDARDS

ST/UPC-MT-D09-GN



ST-APC Connector



ST-UPC Connector



2.0mm Standard Boot

CONNECTOR		ENCLOSURE COLOR		BOOT TYPE(mm)		BOOT COLOR	
ST/UPC	ST/UPC Connector	ZA	ZINC ALLOY	D09	0.9 standard	GN	GREEN
ST/APC	ST/APC Connector	CO	COPPER	D12	1.2 standard	BU	BLUE
				D16	1.6 standard	BG	BEGI
				D20	2.0 standard	AQ	AQUA
				D30	3.0 standard	BK	BLACK
				D46	4.6 standard		

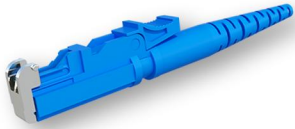
Performance:

- Sun Conec's connectors strictly follow the test standards of Telcordia GR-326-CORE
- Designed to exceed the requirements of Verizon FOCTPR 9409
- The dimensional design complies with IEC 61754-2
- Can be selected according to the material to meet the UL94 flame retardant standards
- The use of our different ferrule types (Premium, Super Premium, Ultra Premium) enables performance matching from standard to high and ultra-high performance interconnection requirements
- Insertion/return loss performance not only exceeds the top 10% of industry benchmarks, but also far exceeds the performance requirements of the Grade B interchange test in the IEC 61753-1 standard.

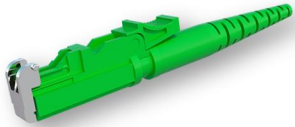
PRODUCT SELECTION

ADAPTED CABLE OD	BOOT TYPE	PICTURE	ENGINEERING DRAWING
0.9mm Simplex	Standard Boot		
2.0mm Simplex	Standard Boot		
3.0mm Simplex	Standard Boot		

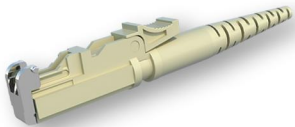
LSH CONNECTOR



LSH/UPC Connector



LSH/APC Connector



LSH/APC Connector

CODE STANDARDS

LSU-BU-D20-GN

CONNECTOR	ENCLOSURE COLOR	BOOT TYPE(mm)	BOOT COLOR
LSU LSH/UPC Connector	BU BLUE	D09 0.9 standard	GN GREEN
LSA LSH/APC Connector	GN GREEN	D20 2.0 standard	BU BLUE
	BG BEIGE	D30 3.0 standard	BG BEIGE

Performance:

- Insertion Loss: ≤ 0.3 dB typical for single-mode
- Widely used in telecom networks, test equipment, fiber-optic CATV, and LANs (Local Area Networks)
- The dimensional design complies with IEC 61754, GR-326, TIA/EIA 568-B, and YDT 1272
- Repeatability: ≤ 0.2 dB
- Return loss:
Single-mode: UPC ≥ 50 dB, APC ≥ 60 dB
Multi-mode: ≥ 25 dB

PRODUCT SELECTION

ADAPTED CABLE OD	BOOT TYPE	PICTURE	ENGINEERING DRAWING
0.9mm Simplex	Standard Boot		
2.0mm Simplex	Standard Boot		
3.0mm Simplex	Standard Boot		

LC CONNECTOR

CODE STANDARDS

LCU-BU-D20-GN

CONNECTOR	ENCLOSURE COLOR	BOOT TYPE(mm)	BOOT COLOR
LCU LC/UPC Simplex Connector	BU BLUE	D09 0.9 standard	GN GREEN
LCA LC/APC Simplex Connector	GN GREEN	D20 2.0 standard	BU BLUE
DLCU LC/APC Duplex Connector	BG BEGI	S20 2.0 Short Tail Boot	BG BEIGE
DLCA LC/UPC Duplex Connector	AQ AQUA	D30 3.0 standard	AQ AQUA
	VT VIOLET	S30 3.0 Short Tail Boot	VT VIOLET
	LM LIME GREEN	D16 1.6 standard	LM LIME GREEN
		D12 1.2 standard	



LC/UPC Connector



LC/APC Connector

Performance:

- Sun Conec's connectors strictly follow the test standards of Telcordia GR-326-CORE
- Designed to exceed the requirements of Verizon FOCTPR 9409
- The dimensional design complies with IEC 61754-20
- Can be selected according to the material to meet the UL94 flame retardant standards
- The use of our different ferrule types (Premium, Super Premium, Ultra Premium) enables performance matching from standard to high and ultra-high performance interconnection requirements
- Insertion/return loss performance not only exceeds the top 10% of industry benchmarks, but also far exceeds the performance requirements of the Grade B interchange test in the IEC 61753-1 standard

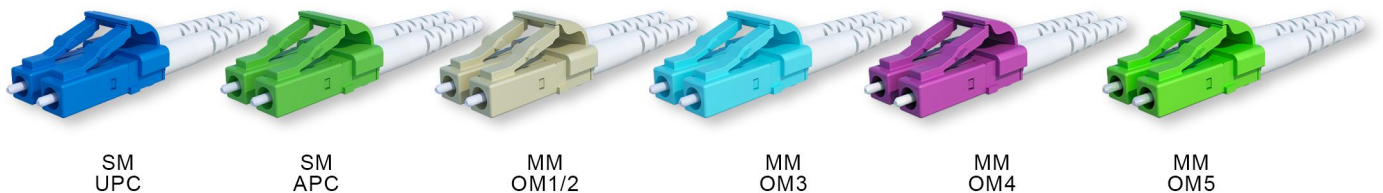
PRODUCT SELECTION (SIMPLEX)

ADAPTED CABLE OD	BOOT TYPE	PICTURE	ENGINEERING DRAWING
0.9mm Simplex	Standard Boot		
1.2mm Simplex	Standard Boot		
1.6mm Simplex	Standard Boot		
2.0mm Simplex	Standard Boot		
3.0mm Simplex	Standard Boot		
2.0/3.0mm Simplex	45° Angle		

PRODUCT SELECTION (DUPLIX)

ADAPTED CABLE OD	BOOT TYPE	PICTURE	ENGINEERING DRAWING
0.9mm Duplex	Standard Boot		
1.2mm Duplex	Standard Boot		
1.6mm Duplex	Standard Boot		
2.0mm Duplex	Standard Boot		
3.0mm Duplex	Standard Boot		
2.0/3.0mm Duplex	45° Angle		
2.0/3.0mm Duplex	90° Angle		

COLOR RECOMMENDATION



SM
UPC

SM
APC

MM
OM1/2

MM
OM3

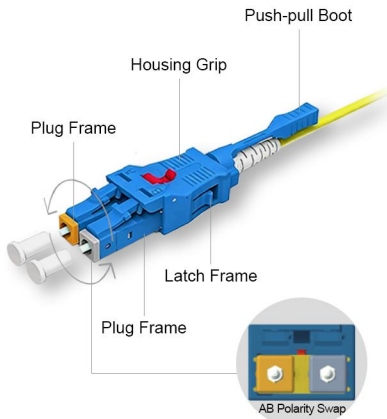
MM
OM4

MM
OM5

LC/UNIBOOT CONNECTOR

CODE STANDARDS

LCU-BU-D20-GN



LC/UNIBOOT Connector

CONNECTOR	ENCLOSURE COLOR	BOOT TYPE(mm)	BOOT COLOR
LCU UNIBOOT Connector	BU BLUE	D20 2.0 standard	WH WHITE
	GN GREEN	D30 3.0 standard	
	BG BEIGE		
	AQ AQUA		

Performance:

- The Uniboot connector utilizes single-tube dual-core optical cables, facilitating cable management and enhancing thermal dissipation within cabling systems.
- Available in push-pull variants, the pull rod enables straightforward insertion or removal of patch cords.
- Its structural design permits effortless interchangeability of fibre polarity.
- Built with high performance material, Multiple colors available.

ORDERING INFORMATION


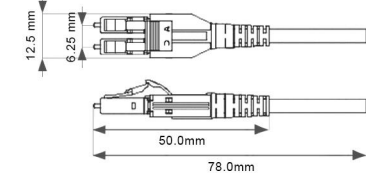
Function		Push-Pull	Switchable Polarity
Type	Matching the cable OD	Picture	Engineering Drawing
Style 1	2.0/3.0mm		

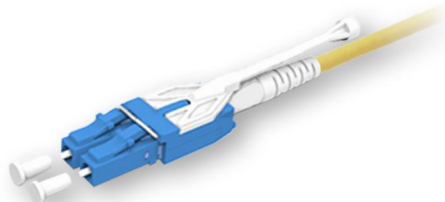
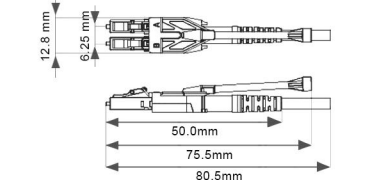
Function		Push-Pull	Switchable Polarity
Type	Matching the cable OD	Picture	Engineering Drawing
Style 2	2.0/3.0mm		

Function		Push-Pull	Switchable Polarity
Type	Matching the cable OD	Picture	Engineering Drawing
Pull Tab	2.0mm		

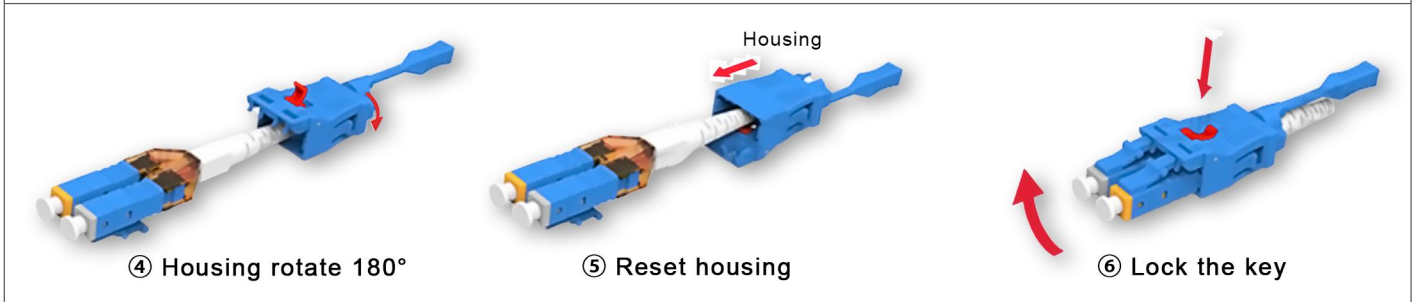
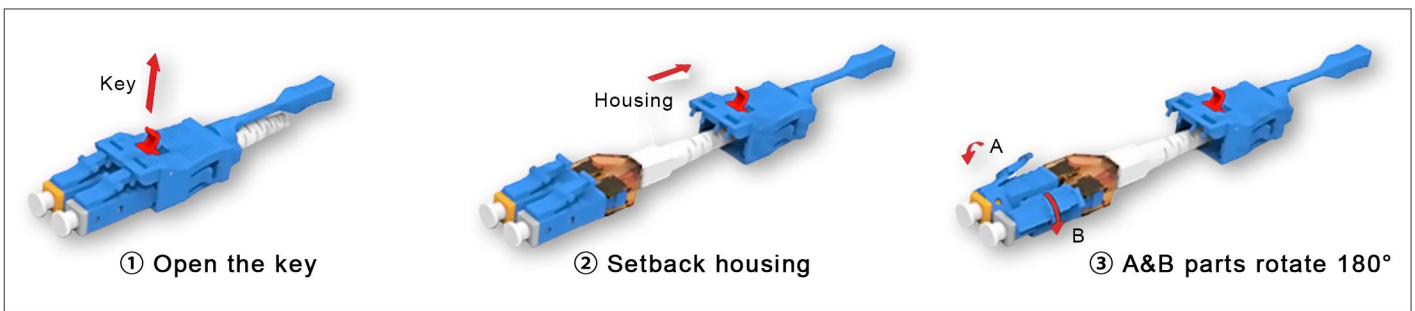
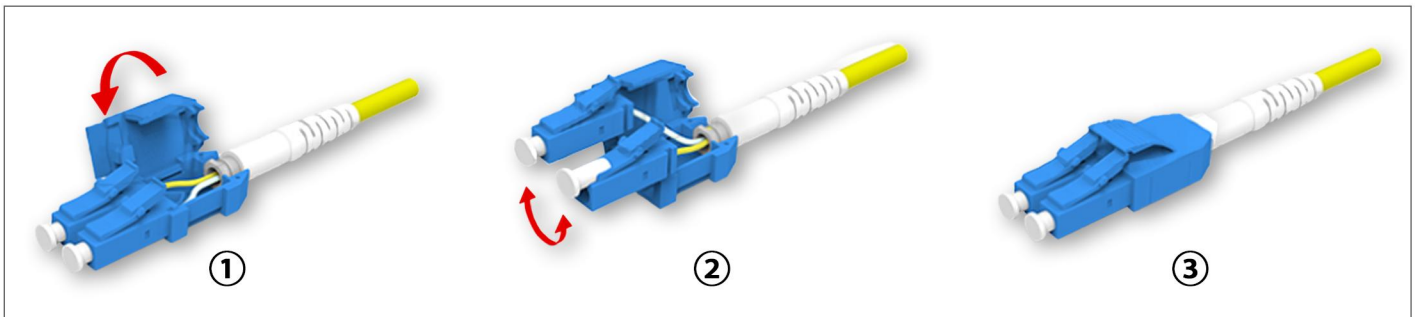
Function		Push-Pull	Switchable Polarity
Type	Matching the cable OD	Picture	Engineering Drawing
Push/Pull Tab	3.0mm		

ORDERING INFORMATION

Function		Push-Pull	Switchable Polarity
Type	Matching the cable OD	Picture	Engineering Drawing
Style 5	2.0/3.0mm		

Function		Push-Pull	Switchable Polarity
Type	Matching the cable OD	Picture	Engineering Drawing
Style 6	2.0/3.0mm		

POLARITY SWAP OPERATION DIAGRAM

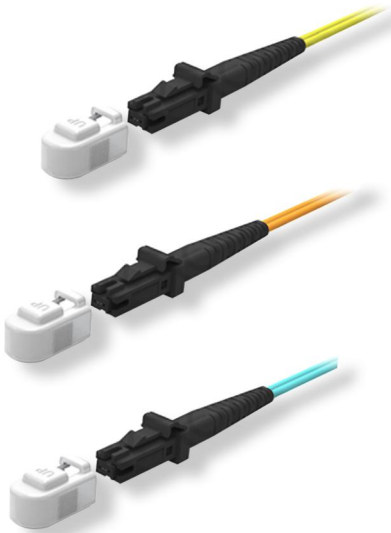


MTRJ CONNECTOR

CODE STANDARDS

MT2-BK-D09-BK

CONNECTOR		ENCLOSURE COLOR		BOOT TYPE(mm)		BOOT COLOR	
MT2	2-fibre MTRJ connector	BK	BLACK	B18	Flat-tailed 1.8 × 3.6	BK	BLACK
MT4	4-fibre MTRJ connector			Y30	3.0 Round Tail		



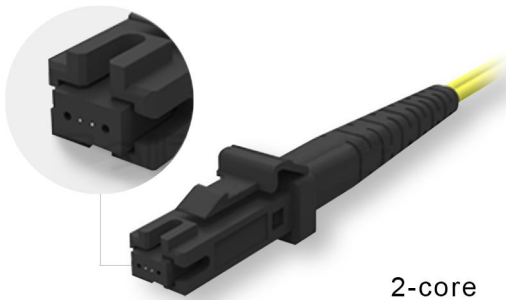
MTRJ Connector

Performance:

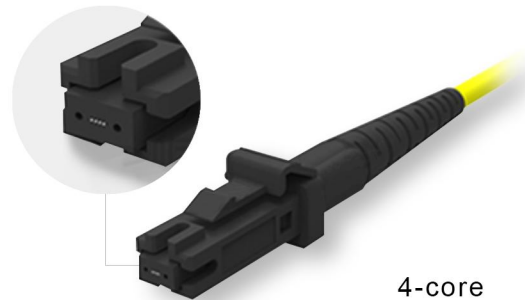
- Sun Conec's connectors strictly follow the test standards of Telcordia GR-326-CORE.
- Designed to exceed the requirement of Verizon FOCTPR 9409 requirements.
- The dimensional design complies with IEC 61754-24.
- Can be selected according to the material to meet the UL94 flame retardant standards.
- The use of our different ferrule types (Premium, Super Premium, Ultra Premium) enables performance matching from standard to high and ultra-high performance interconnection requirements.
- Insertion/return loss performance not only exceeds the top 10% of industry benchmarks, but also far exceeds the performance requirements of the Grade B interchange test in the IEC 61753-1 standard.

PRODUCT SELECTION

STRUCTURE



2-core



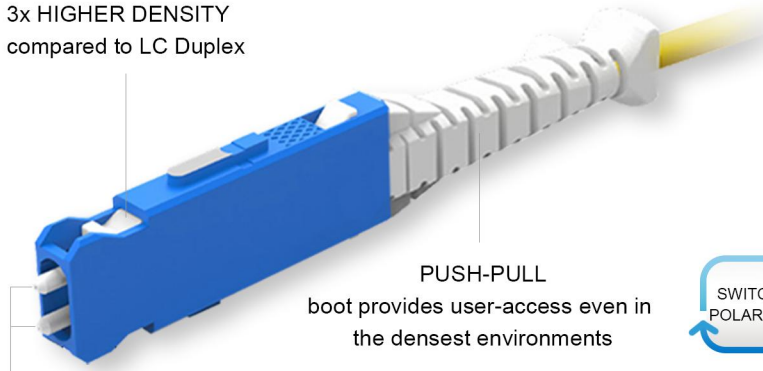
4-core

ADAPTED CABLE OD	BOOT TYPE	PICTURE	ENGINEERING DRAWING
1.8x3.6mm	Flat Terminal for 2x1.8mm Tight-Buffered Fiber Optic Cable		
3.0mm	Round Terminal for 3.0mm Tight-Buffered Fiber Optic Cable (Single Tube, 2 or 4 Fibers)		

SN CONNECTOR

The SN connector has an integrated 'push-pull' boot that simplifies insertion and removal of the connector even in dense patch panels where finger access is limited. A gang-clip can be added to four individual SN connectors allowing them to be patched simultaneously to either adapters or 4-channel (8 fibers) transceivers (subject to product selection).

3x HIGHER DENSITY compared to LC Duplex



PUSH-PULL boot provides user-access even in the densest environments



2X 1.25MM CERAMIC FERRULES providing carrier grade reliability and performance



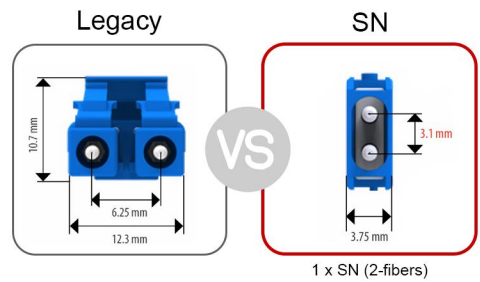
APC OPTION AVAILABLE



PRE-ASSEMBLED KIT



GANG CLIP COMPATIBLE

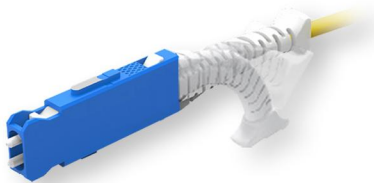


OPTICAL DATA

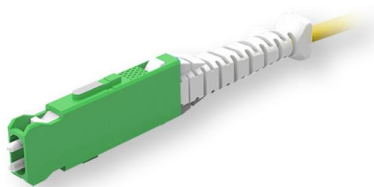
CODE STANDARDS

SNA-BU-D20-WH

CONNECTOR		ENCLOSURE COLOR		BOOT TYPE(mm)		BOOT COLOR	
SNA	SN/APC connector	BU	BLUE	D20	1.6-2.0 Push-Pull Standard	WH	WHITE
SNU	SN/UPC connector	GN	GREEN				
		AQ	AQUA				



SN Connector UPC with Flex Angle Boot



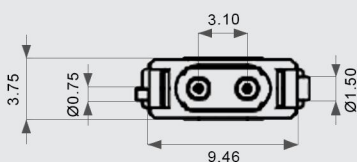
SN Connector APC for 1.6mm/2.0mm Cable

Performance:

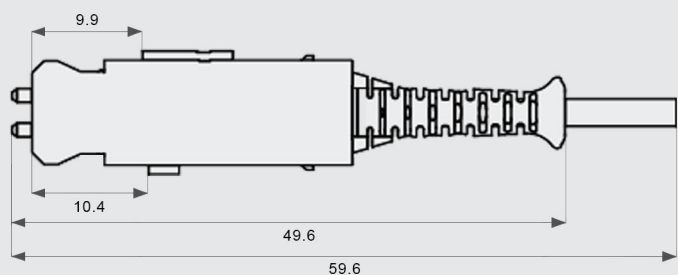
- Sun Conec's connectors strictly follow the test standards of Telcordia GR-326-CORE
- Designed to exceed the requirements of Verizon FOCTPR 9409
- The dimensional design complies with IEC 61754-13
- Unique push-pull boot for simple installation and removal
- The use of our different ferrule types (Premium, Super Premium, Ultra Premium) enables performance matching from standard to high and ultra-high performance interconnection requirements
- IEC random mating Grade B
- Effective size reduction compared to LC Duplex

1-CHANNEL CONNECTOR DRAWING

Front View

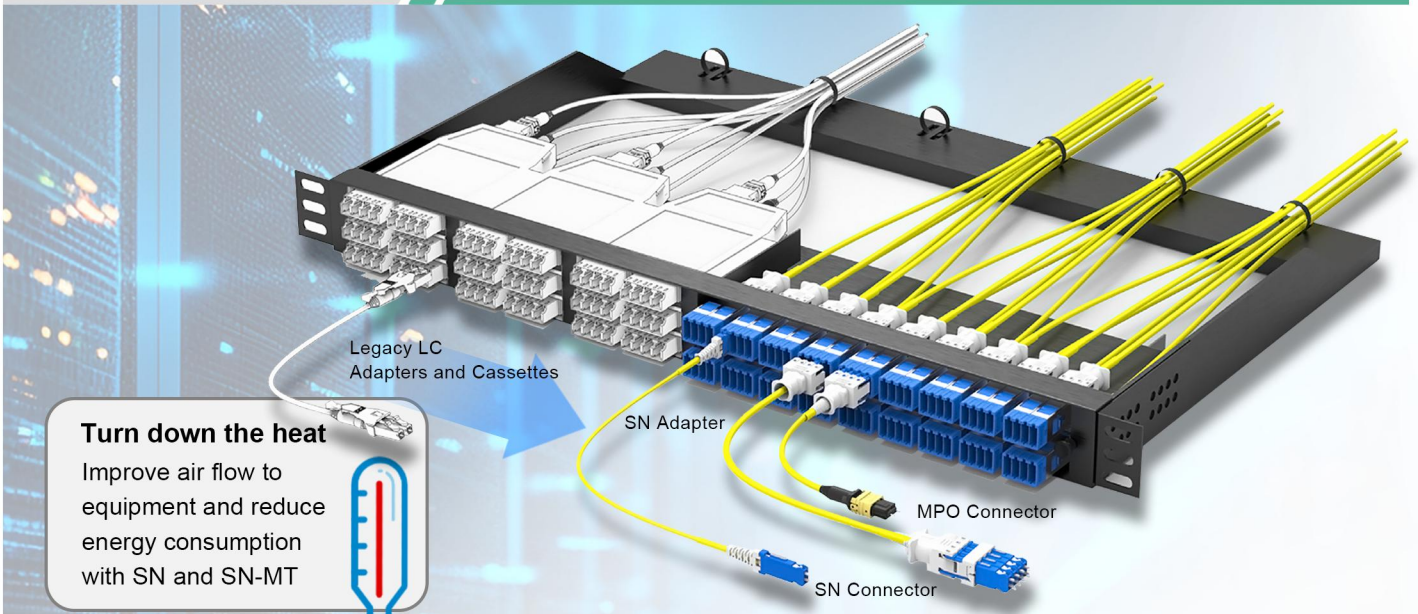


Side View



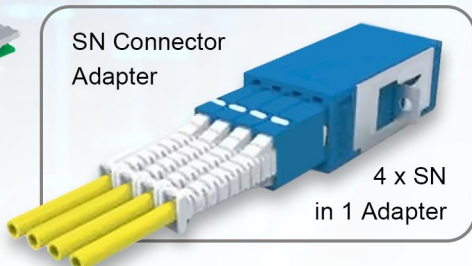
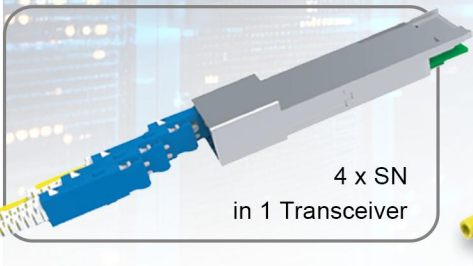
Note: All dimensions are in mm

DISTINCTIVE ADVANTAGES



Turn down the heat

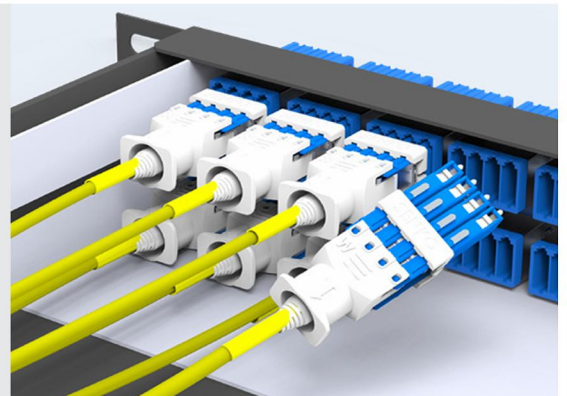
Improve air flow to equipment and reduce energy consumption with SN and SN-MT



SN APPLICATION GUIDE

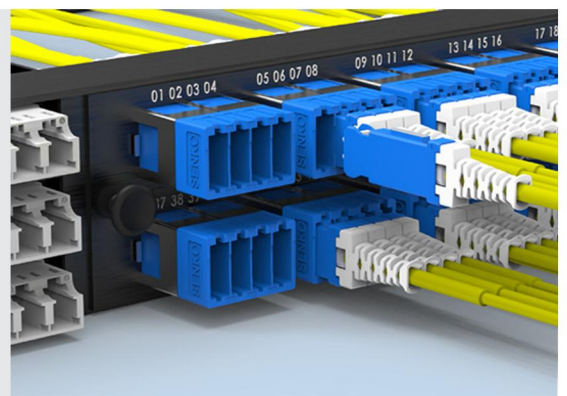
Structured Cabling

The SN Uniboot connector stands out as an ideal solution for constructing high-density, Base-8 structured networks. It significantly accelerates deployment while drastically cutting down cable clutter. For alternative setups, the SN Standard connectors can be efficiently grouped with a dedicated plastic clip, and breakout cables or fanout assemblies can be implemented in a similar streamlined manner.

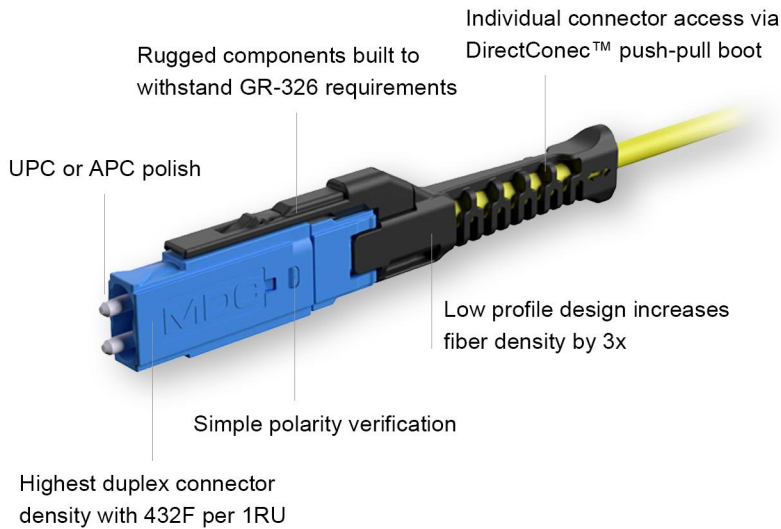


Individual SN Patching

For reliable front-side patching to panels and transceivers, the SN Standard series delivers proven performance and durability. In scenarios requiring field-configurable connectivity, polarity-reversible designs offer unique flexibility, allowing real-time adjustments without retermination—saving time and reducing deployment errors in high-density environments.



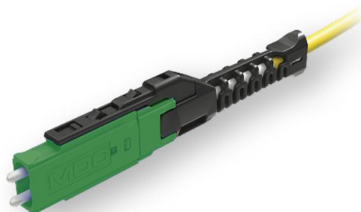
MDC CONNECTOR



MDC is a duplex connector manufactured using the industry-standard 1.25mm ferrule technology of LC connectors. A triple-port MDC adapter can be installed directly into the standard panel cutout for a duplex LC adapter, tripling fiber density. It supports emerging transceiver Multi-Source Agreement (MSA) port breakout architectures. Its compact size enables a single transceiver to accept multiple MDC patch cords, which can be individually accessed directly at the transceiver interface. It supports up to four independent MDC cables (in QSFP form factor) and two independent MDC cables (in SFP form factor).

OPTICAL DATA

CODE STANDARDS



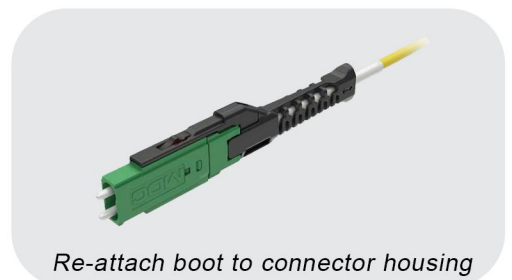
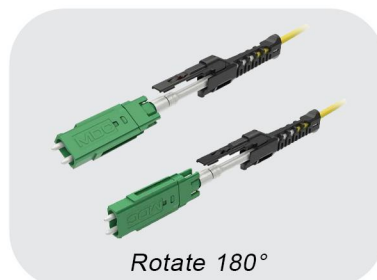
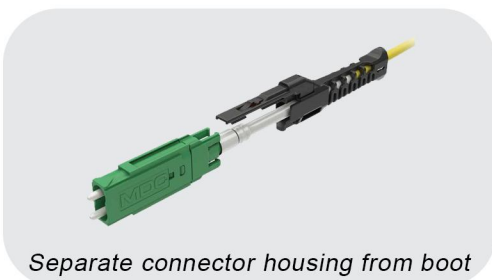
MD/APC-BU-D20-BK

CONNECTOR		ENCLOSURE COLOR		BOOT TYPE(mm)		BOOT COLOR	
MD/UPC	MD/UPC connector	BU	BLUE	D20	2.0 End Standard	BK	BLACK
MD/APC	MD/APC connector	GN	GREEN				
		AQ	AQUA				

Performance:

- 3x fiber cabling density over LC connectors, providing 216 duplex connectors (432 fibers) within 1 RU.
- DirectConec™ push-pull boot for effortless connector insertion and extraction.
- Simple polarity reversal with no exposed fibers.
- Meets IEC Attenuation Grade B random mating requirements (0.12 dB mean, 0.25 dB maximum for ≥ 97% of the connectors).
- Telcordia GR-326 and TIA-568 compliant.
- Designed for cables up to 2.0mm OD.
- Multi-mode, Singlemode and Singlemode APC available.

POLARITY REVERSAL PROCESS



Quick and Simple Polarity Reversal

The polarity reversal of the MDC connector is effortless and does not expose or twist delicate fibers during the process. To change polarity, pull the boot from the connector housing, rotate the boot 180 degrees, and reassemble the boot assembly back onto the connector housing. Polarity marks on the top and side of the connector and the MDC logo provide notification of reversed connector polarity.

DISTINCTIVE ADVANTAGES

Legacy LC Adapters and Cassettes

MDC Adapter

MPO Connector

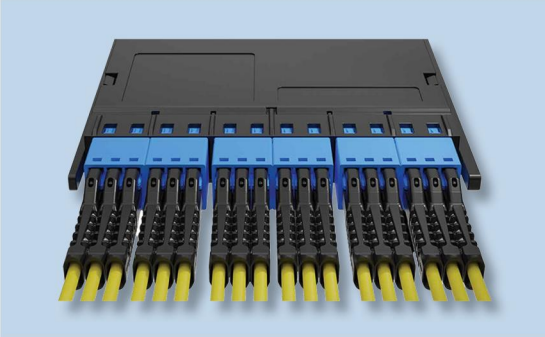
MDC Connector

Triple Density in the Same Space

MDC delivers 3x the fiber density of LC duplex in one rack unit—432 fibers vs. 144—using identical panel space. Maximize capacity, minimize footprint.

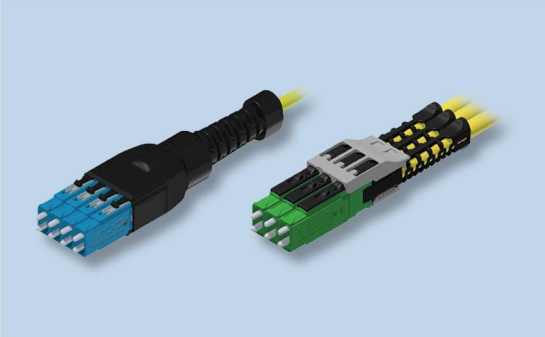
Ensuring Unimpeded Access in Ultra-Dense Deployments

Featuring an intuitive push-pull boot design, the MDC connector allows for smooth insertion and extraction even in tightly packed panels. The flexible yet robust boot maintains cable bend radius compliance and eliminates buckling during operation, ensuring reliable performance without disrupting adjacent links.



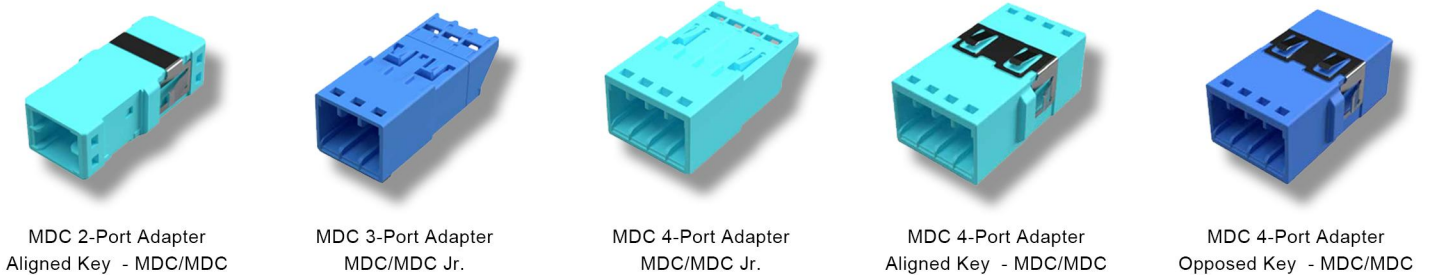
Aggregation Solutions

Combining multiple connectors together as one unit reduces the number of connections and helps provide immediate identification of cable groupings. SUN CONEC offers several aggregation solutions including clips and consolidated connectors.

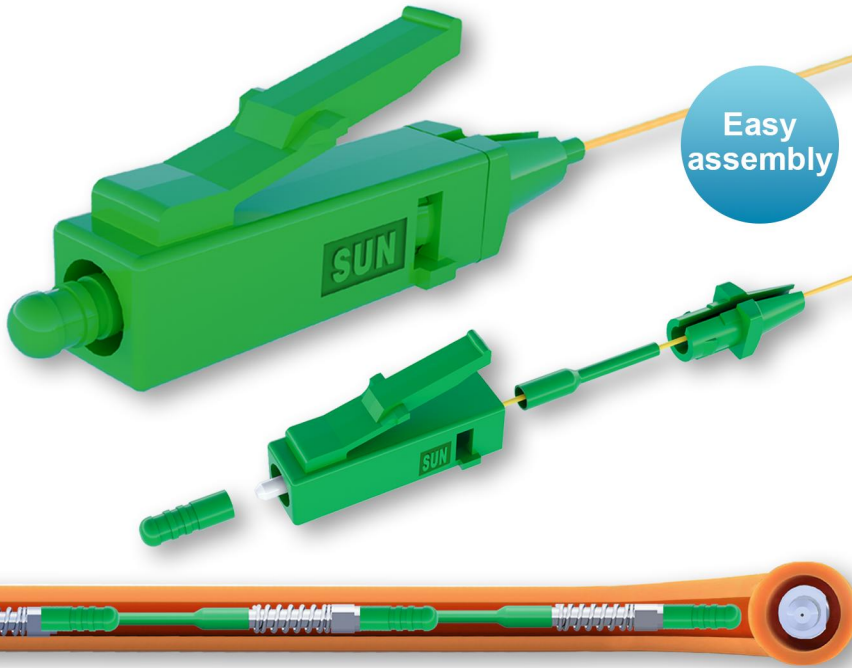


VARIETY OF ADAPTERS

SUNCONEC's 2-port and 3-port MDC adapters fit standard LC panel openings, instantly doubling or tripling port density without rack modification.



LC-WHOOSH CONNECTOR



SUN CONEC's LC-WHOOSH Connector is designed to be air-blown through micro-ducts for fast pre-connectorised FTTH drop applications. The connector's ferrule is blown through the duct before the outer housing and boot are assembled.

Performance:

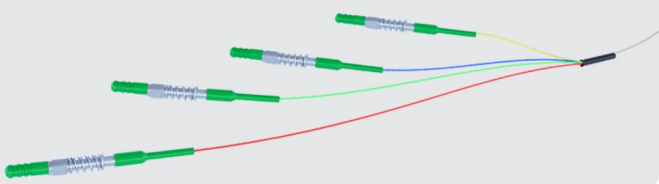
- **Fast Installation**
Connector housing can be assembled in less than 15s
- **Tensile strength**
400N
- **High Performance**
Unique design achieves and maintains Grade B optical performance
- **User-Friendly**
reel packaging is convenient to access and install
- All products can meet random mating Grade B (IEC 61300-3-34)

OPTICAL DATA

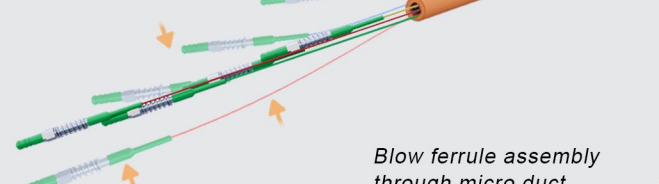
	Value
Single-core Outer Diameter	≤ 2.5mm
Combined Outer Diameter Of 4 LC Connectors	≤ 3.0mm
Pass Through A Minimum Inner Diameter	≥ 4.0mm
REACH Compliance	Yes
Free of Halogen	Yes
Humidity Resistance	95%

HOW TO INSTALL

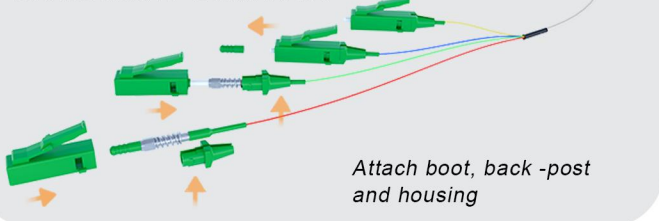
1. Blow



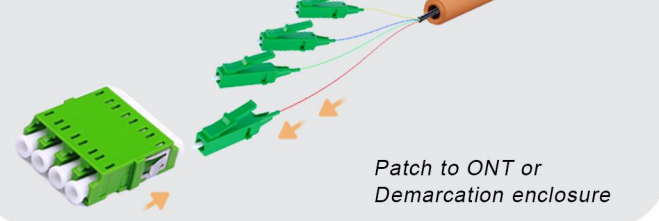
2. Assemble



3. Assemble Connector



4. Patch



Super fast, high performance connector for FTTH DUCT and DROP applications.

LC-ENT CONNECTOR



Performance:

- **Fast Installation**
Easy and fast assembly without special tools
- **High Performance**
Unique design achieves and maintains Grade B optical performance
- **User-Friendly**
reel packaging is convenient to access and install
- Cost effective
- Easy handling after termination due to connectorization directly to cable
- All products can meet random mating Grade B (IEC 61300-3-34)

Compatible with tubes of ID: 5mm



Fast Installation

connector housing can be assembled in less than **10s**



Tensile Strength

100N
(with pulling connector)



High Performance

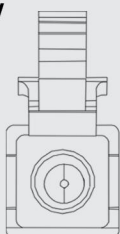
Unique design achieves **Grade B** optical performance

OPTICAL DATA

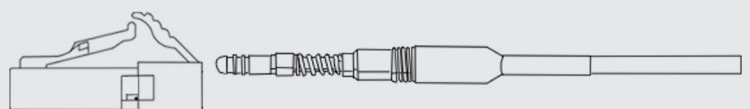
	Value
Outer Diameter	≤ 2.5mm
Inner Diameter	≤ 3.0mm
Insertion Loss (dB)	Typical ≤ 0.3
Return Loss	Typical ≥ 45
Operating Temperature	-40°C~+75°C
Humidity Resistance	95%
REACH Compliance	Yes
Qualification	TIA/EIA 568-B.3

1-CHANNEL CONNECTOR DRAWING

Front View



Side View



Note: All dimensions are in mm

WEATHERPROOF CONNECTOR

Rugged designs compliant with GR-3120 and IEC 61753



Blind mating features on housing prevent ferrule contamination and damage



Indoor/outdoor applications



Cost effective



Reduce installation time



Easy assembly

The Weatherproof Connector is SUN CONEC's flagship connectivity solution designed for outdoor applications and harsh environments. The high optical performance is paired with ergonomic mechanics for quick and easy installations.

Performance:

- IP water immersion and dust protection for harsh environment
- Cost-effective solution for in-house termination
- Chemical Resistance
- Easily adapts to both wall-penetration and butt-joint applications
- The spiral bayonet design provides a lasting and reliable connection
- Rugged designs compliant with GR-3120 and IEC 61753



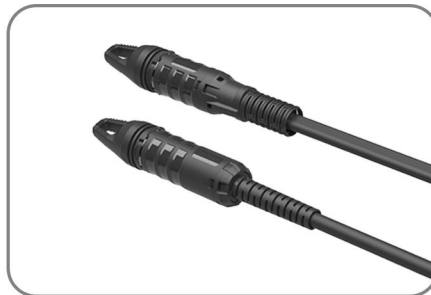
Withstand the Elements

OPTICAL DATA



Quick Installation

The guiding mechanism has a blind mating function, allowing for a simple and fast connection installation.



Flexible Termination, High Strength

This connector can withstand a pull force of 450N (100lbf), making it suitable for FTTH, FTTA, and a wide range of other demanding applications.



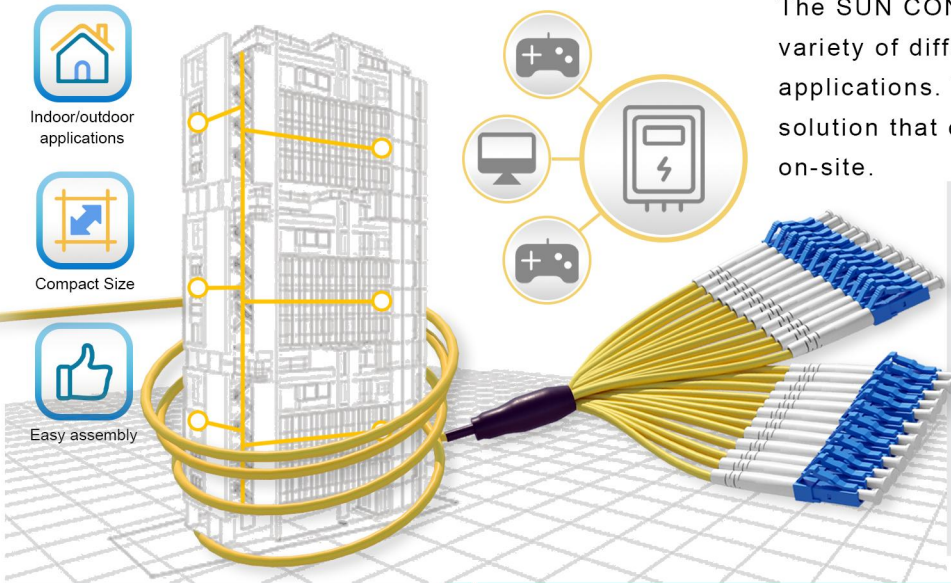
Sealed Design

Features such as waterproofing, dust resistance, and corrosion resistance meet the IP67 protection level.

	PICTURE	ENGINEERING DRAWING
Docking Scene Status		
State Transition Process		Replace the wall-penetrating cap to easily switch between wall-penetrating and docking scenario applications.

INDOOR FAN-OUT KIT

The SUN CONEC Indoor fan-out range offer a variety of different layout options for most indoor applications. They are cost-effective, time saving solution that eliminates the need for splicing on-site.



Performance:

- For indoor breakout applications
- Light Weight, Snap-together Molded Construction
- Maximum Fan-Outs According to Media Type(x48)
- High-performance low loss
- Chemical Resistance

OPTICAL DATA

SPECIFICATIONS

Mounting	Hose Clip / Cable Tie
Number of Fibers	12 to 288 (Note: According to Media Type 2.0mm or 900um)
Suitable for Connector Types	LC, SC, FC, ST, MU
Dimensions	56mm x 15mm (Excluding cable gland)
Feeder Cable OD range	2-6mm
Operating Temperature (°C)	-40 to +85
Fan-out cable Retention	>15lbs (>66N)
Feeder Cable Retention	100lbs (450N)

BRANCH STRUCTURE DISPLAY

Mini Round Cable

Mini Cable

Fiber with 0.9 mm Loose tube

Mini Round Cable

Mini Cable

Fanout kit

Fiber with 2.0/3.0 mm Loose tube

Breakout Cable

Branching method of breakout cable

0.9mm Tight Buffer

Breakout Cable

Branching method of breakout cable

Fanout kit

Fiber with 2.0/3.0mm Loose tube

Breakout Cable

Branching method of breakout cable

Fanout kit

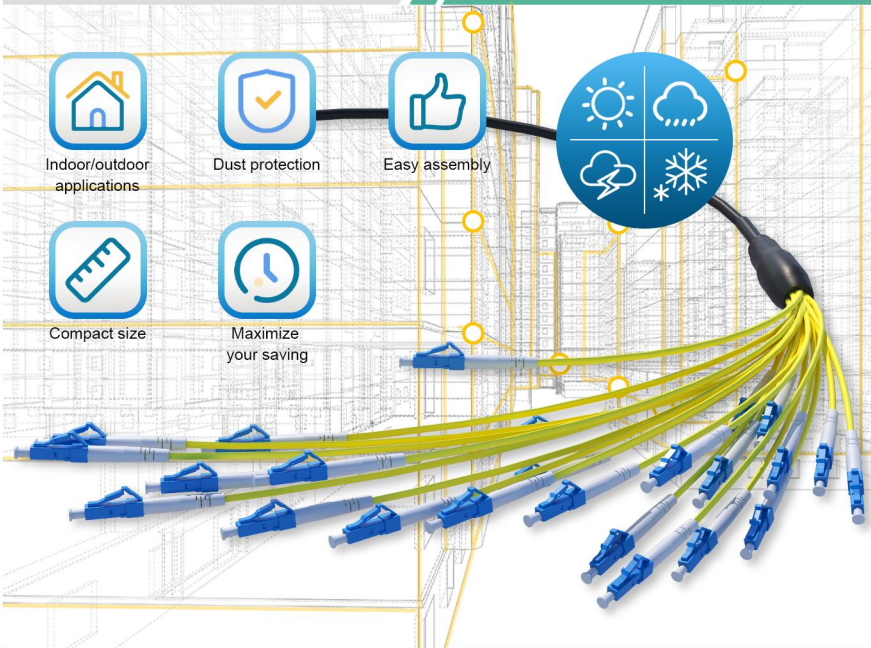
3.0mm Branch with internal armor tube

Distribution Cable

Branching method of breakout cable

2.0mm Sub-cable

OUTDOOR FAN-OUT KIT



The SUN CONEC Outdoor fan-out range offers a variety of different layout options for most indoor applications. They enable less cabling and lower costs, allowing for quick and cost-effective installation.

Performance:

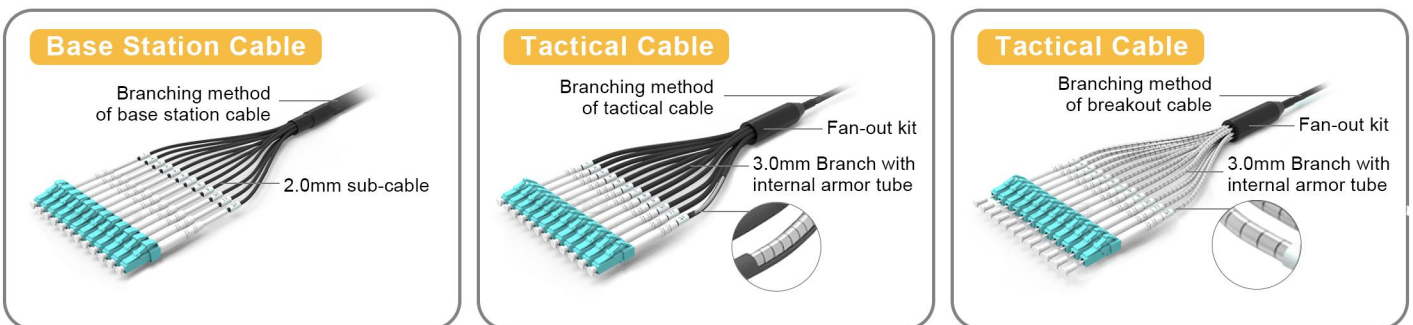
- Compact Size
- Easy Assembly
- Light Weight, snap-together molded construction
- For outdoor breakout applications
- UV resistance for outdoor applications
- High performance low loss
- Chemical resistance

OPTICAL DATA

SPECIFICATIONS

Mounting	Hose Clip / Cable Tie
Number of Fibers	12 to 288 (Note: According to Media Type 2.0mm or 900µm)
Suitable for Connector Types	LC, SC, FC, ST, MU
Dimensions	56mm x 15mm (Excluding cable gland)
Feeder Cable OD range	2-6mm
Operating Temperature (°C)	-40 to +85
Fan-out cable Retention	>15lbs (>66N)
Feeder Cable Retention	100lbs (450N)

BRANCH STRUCTURE DISPLAY



MPO/MTP Connector

▪ Connector Performance	pg.31
▪ Product Naming, Standard Patch Cable Structure	pg.32
▪ MPO Connectors and Product Selection	pg.33
▪ MPO (Push-Pull) Connectors and Product Selection	pg.34-35
▪ SN-MT Connectors	pg.36-37
▪ MMC Connectors	pg.38
▪ MPO-LC (24-Core) Connectors and Product Selection	pg.39
▪ MPO-LC/Uniboot (24-Core) Connectors and Product Selection	pg.40

Insertion Loss (IL) and Return Loss (RL)

Optical Performance		SM/APC	MM/APC	SM/UPC	MM/UPC
IL (dB)	Standard	0.7	0.7	0.7	0.7
	Low Insertion Loss	0.35	0.35	0.35	0.35
RL (dB)	Standard	60	40	50	20
	High Return Loss	65	45	55	25

Fiber Endface Geometry Comparison

MTP Single Mode/Multimode					
Measurements Parameters			Limits		
			Minimum		Maximum
ROC	X-ROC		2000mm(Convex) -10000mm(Concave)		N/A
	Y-ROC		50mm		N/A
Angle	X-Axis		-0.15°		0.15°
	Y-Axis	APC	7.8°		8.2°
		Flat	-0.2°		0.2°
Fiber Height			1100nm		3000nm
Diff.Height			N/A		500nm
Adj.Height			N/A		300nm
Ferrule Length	PC		7.8mm		N/A
	APC		7.9mm		N/A
Core Dip			/		120mm
Geometry Limit(N)	APC(SM)		N/A		22.6(4 Fiber)
					17.9(8 Fiber)
					17.4(12 Fiber)
Minus Side Coplanarity (nm)		APC/PC	N/A		400
Fiber Tip Spherical Radius (mm)		APC/PC	1		∞

OPTICAL PATCH CORD

CODE STANDARDS

MP-SCA-S-09-Z-A

A-SIDE CONNECTOR TYPE		B-SIDE CONNECTOR TYPE		CORE COUNT		OUTER DIAMETER		MATERIALS		OPTICAL FIBER TYPE	
MP	MPO	MP	MPO	S	single-core	09	0.9	Z	LSZH	A	G652D
MT	MTP	MT	MTP	D	dual-core	12	1.2	V	PVC	B	G657A1
MJ	MTRJ	MJ	MTRJ	M	multi-core	20	2.0	O	OFNP	C	G657A2
						30	3.0			D	G657B3
										E	G655
										F	OM1
										G	OM2
										H	OM3-150
										J	OM3-300
										K	OM4
										L	OM5

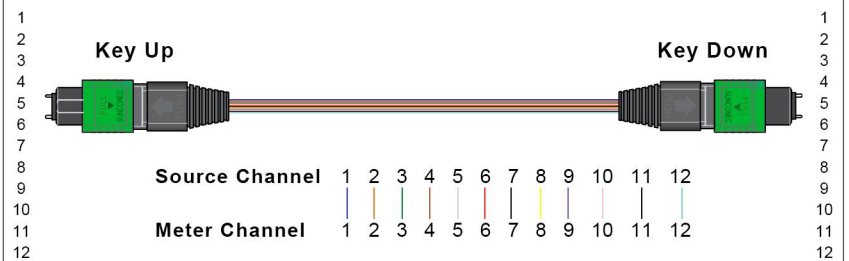
Note: Custom lengths available to meet your requirements.

STANDARD PATCH CORD STRUCTURE

Method A: Patch Cord Polarity Flip

Straight through MPO to MPO Polarity (TYPE A)

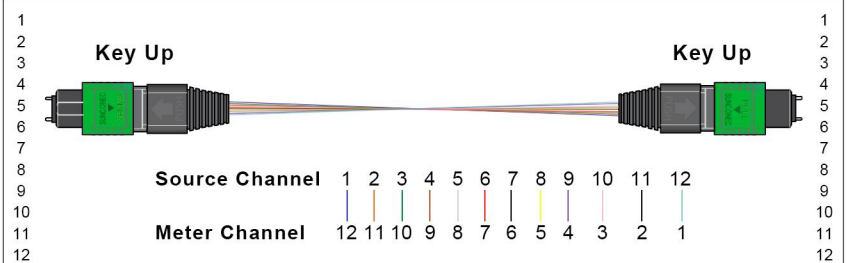
This is the most intuitive method, where all fibers connect from one end to the other in the same positional order. It is typically used for fan-out from equipment ports to backbone cables or for connecting cables of the same polarity within a patch panel.



Method B: Adapter Polarity Flip

Reversed MPO to MPO Polarity (TYPE B)

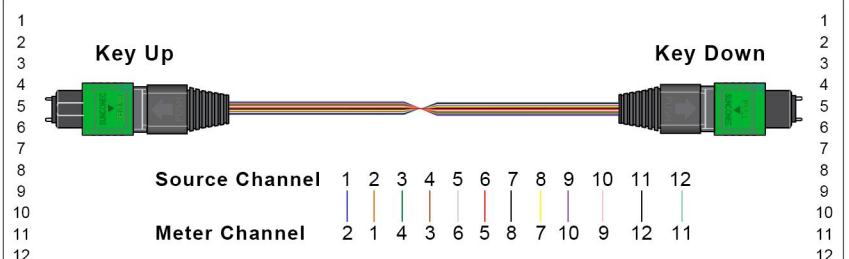
This method completely reverses the sequence of all fibers. It is the most commonly used and standard polarity type for backbone cables, ensuring a "reverse-and-reverse-again" fiber position throughout the entire link, thereby achieving correct end-to-end connectivity.



Method C: Pair Polarity Flip

Flipped Pairs MPO to MPO Polarity (TYPE C)

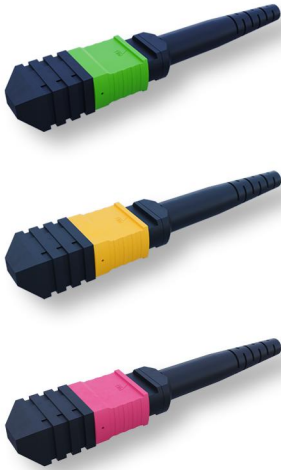
This method swaps adjacent fibers in pairs. It is primarily used for specific parallel duplex optical module applications or serves as an alternative to Type B in certain cabling architectures to achieve the same end-to-end connection result.



MPO CONNECTOR

CODE STANDARDS

MO12-GN-20-BU



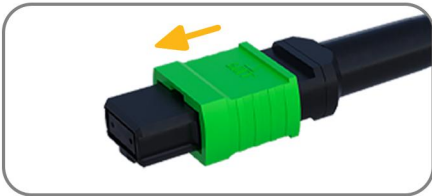
MPO Connector

CONNECTOR		ENCLOSURE COLOR		BOOT TYPE(mm)		BOOT COLOR	
MO12	12-fiber MPO connector	BU	BLUE	20	2.0 Standard	GN	GREEN
MO16	16-fiber MPO connector	GN	GREEN	30	3.0 Standard	BU	BLUE
MO24	24-fiber MPO connector	BG	BEGI			BG	BEGI
		AQ	AQUA GREEN			AQ	AQUA
						BK	BLACK

Performance:

- Sun Conec's connectors strictly follow the test standards of Telcordia GR-326-CORE.
- The use of our different ferrule types (Premium, Super premium, Ultra premium) enables performance matching from standard to high and ultra-high performance interconnection requirements.
- The dimensional design complies with IEC 61754-7.
- Can be selected according to the material to meet the UL94 flame retardant standards.
- Insertion/return loss performance not only exceeds the top 10% of industry benchmarks, but also far exceeds the performance requirements of the Grade B interchange test in the IEC 61753-1 standard.

OPTICAL DATA



Removable Housing



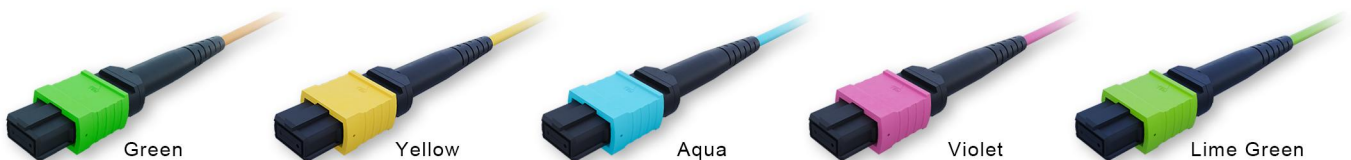
Maximize panel density



Various Boot Styles

ADAPTED CABLE OD	BOOT TYPE	PICTURE	ENGINEERING DRAWING
0.9 mm Simplex	Standard Boot		
3.0 mm Simplex	Standard Boot		
4.0 mm Simplex	Flat Boot		

CONNECTOR BOOT COLOR



Green

Yellow

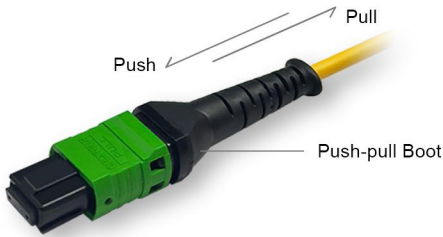
Aqua

Violet

Lime Green

MPO PUSH-PULL CONNECTOR

CODE STANDARDS



MO12-GN-20-BU

CONNECTOR		ENCLOSURE COLOR		BOOT TYPE(mm)		BOOT COLOR	
MO12	12-fiber MPO connector	BU	BLUE	20	2.0 Ferrule	GN	GREEN
MO16	16-fiber MPO connector	GN	GREEN	30	3.0 Ferrule	BU	BLUE
MO24	24-fiber MPO connector	BG	BEGI			BG	BEGI
		AQ	AQUA GREEN			AQ	AQUA GREEN
						BK	BLACK

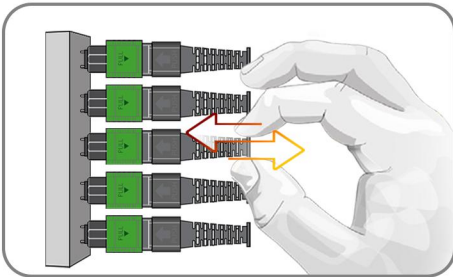


MPO PUSH-PULL Connector

Performance:

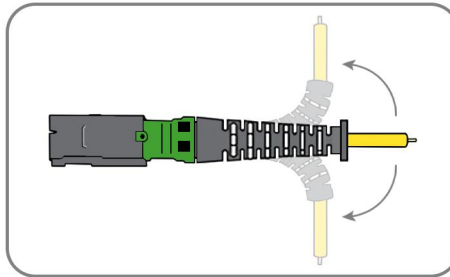
- High precision guide pins for exact alignment
- Compact design, up to 24 fiber ribbons
- Total length of connector is 54.5mm (including MT ferrule)
- Compliant with IEC61754, GR1435, TIA-604 standards
- Polishing does not require diamond film
- Easy to assemble and can be disassembled repeatedly
- Flex angle boot and other boot styles
- Spring Push with Slit for easier assembly

FEATURE



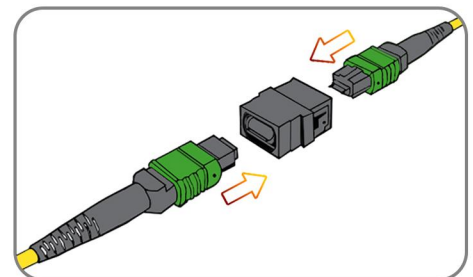
PUSH-PULL boot

Easy insertion and removal of high-density environment



90 degree bending side pull 45N

SUN CONEC's push-pull boot withstands stress tests, maintaining insertion loss by controlling force and bend radius.



Low-Loss ferrules

SM & MM typical insertion loss: 0.1 dB
Maximum insertion loss: 0.25 dB



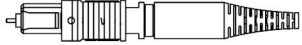



MPO PUSH-PULL CONNECTOR BOOT

RIBBON BOOTS







RIBBON FIBER	PICTURE		ENGINEERING DRAWING
Bare Ribbon			
Bare Ribbon Short			
Flat Ribbon Cable			

MPO PUSH-PULL CONNECTOR BOOT







2.0MM ROUND BOOTS

RIBBON FIBER	PICTURE		ENGINEERING DRAWING
2.0mm Boot with Crimp			
2.0mm Boot without Crimp			



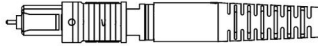



3.0MM ROUND BOOTS

RIBBON FIBER	PICTURE		ENGINEERING DRAWING
3.0mm Boot			
3.0mm Flex Angle			

3.6MM ROUND BOOTS

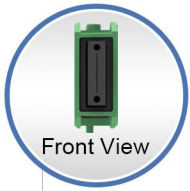
RIBBON FIBER	PICTURE		ENGINEERING DRAWING
3.6mm Boot			
3.6mm Flex Angle			

4.5/5.0/5.5MM ROUND BOOTS

RIBBON FIBER	PICTURE		ENGINEERING DRAWING
4.5mm Boot			
5.0mm Boot			
5.5mm Boot			

SN-MT CONNECTOR

The SUN CONEC SN-MT extends the proven SN series by integrating 16×200 μm fibers into a single, compact ferrule. Delivering 2.7 times the density of an MPO16 connector while maintaining reliable alignment technology, it ensures low-loss performance for both single-mode and multimode APC applications—meeting the demanding patch-panel density requirements of modern hyperscale data centers.



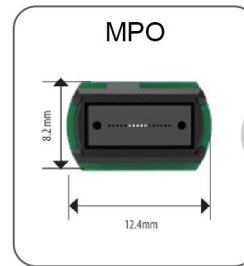
ACCESSIBLE
push-pull boot for
fast and easy access

2.7x
Density increase
compared to MPO-16F

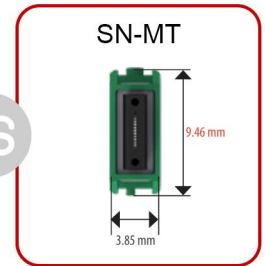
HYPERSCALE DENSITY
2.7x denser than
MPO-16F



Footprint size comparison with MPO

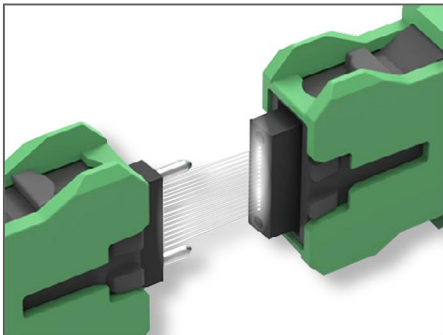


VS

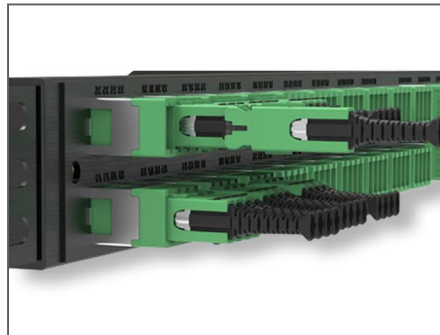


1 x SN-MT (16-fibers)

OPTICAL DATA



Precision Ferrules



Push-Pull Boot



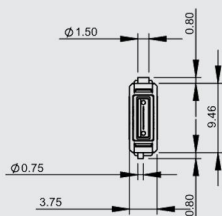
Flex-Angle Boot

Performance:

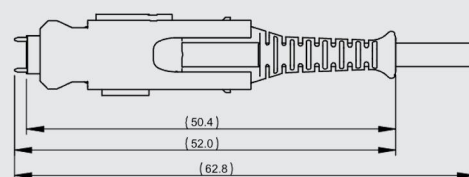
- Sun Conec's connectors strictly follow the test standards of Telcordia GR-326-CORE
- Designed to exceed the requirement of Verizon FOCTPR 9409 requirements
- The dimensional design complies with IEC 61754-13
- Unique push-pull boot for simple installation and removal
- The use of our different ferrule types (Premium, Super premium, Ultra premium) enables performance matching from standard to high and ultra-high performance interconnection requirements
- Effective size reduction compared to LC Duplex
- Wide range of connector and adapter types for legacy upgrades or greenfield applications

SN-MT STANDARD DRAWING

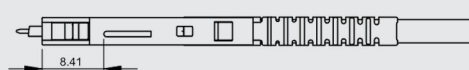
Front View



Side View

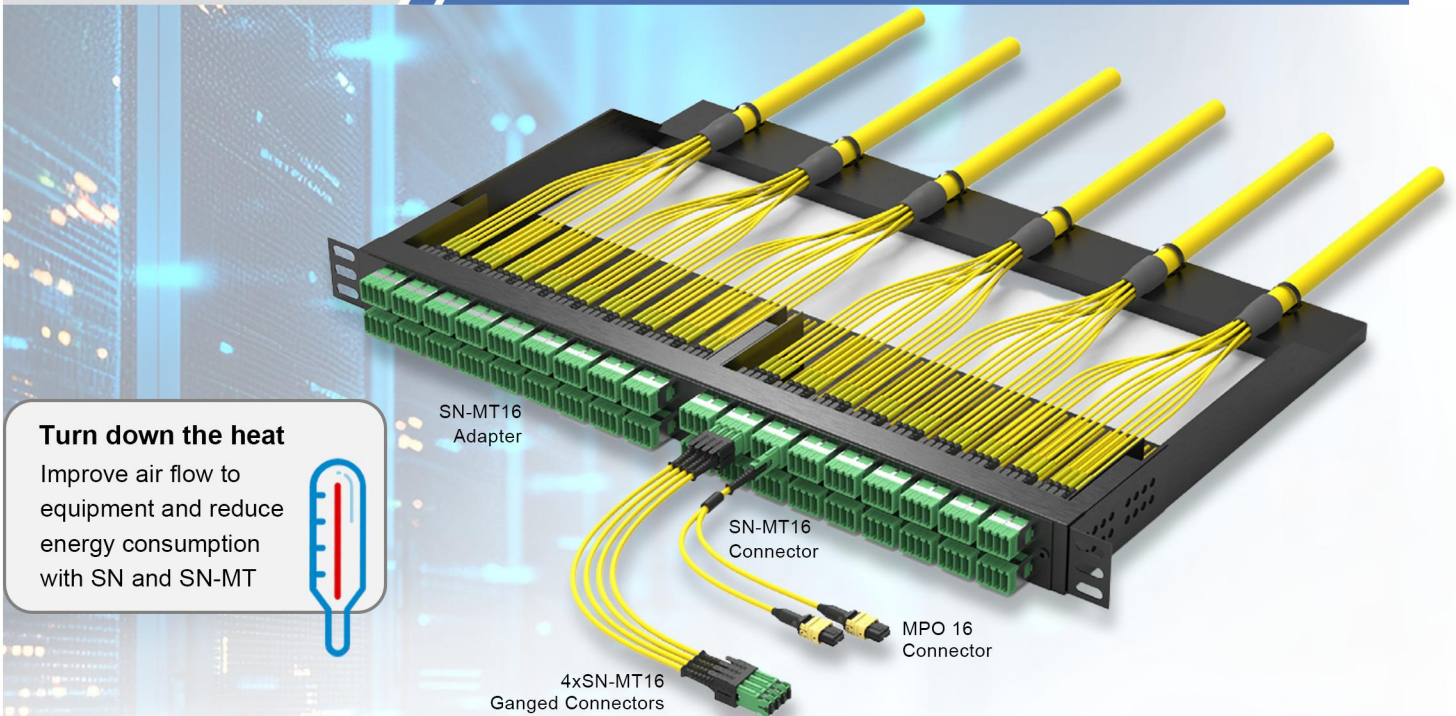


Top View



Note: 1. All dimensions are in mm
2. Specifications subject to change without notice

DISTINCTIVE ADVANTAGES



Turn down the heat

Improve air flow to equipment and reduce energy consumption with SN and SN-MT

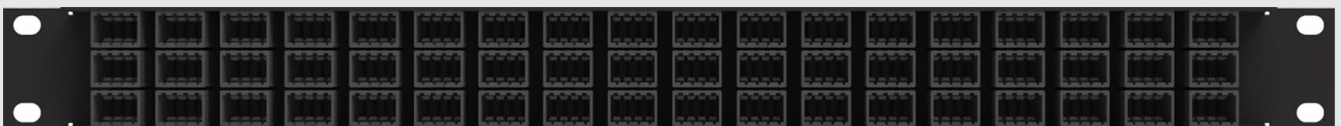


SN-MT Density Comparison with MPO in 1RU Panel

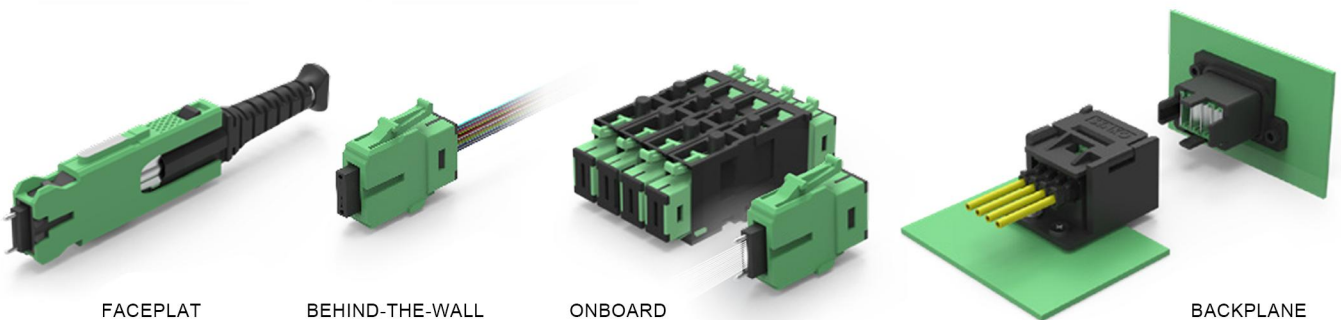
MPO 80-port: total 1280F with MPO-16F, total 2560F with MPO 32F



SN-MT 216-port: total 3456F with SN-MT 16F



HIGH-DENSITY CONNECTOR DEPLOYMENT CONFIGURATIONS



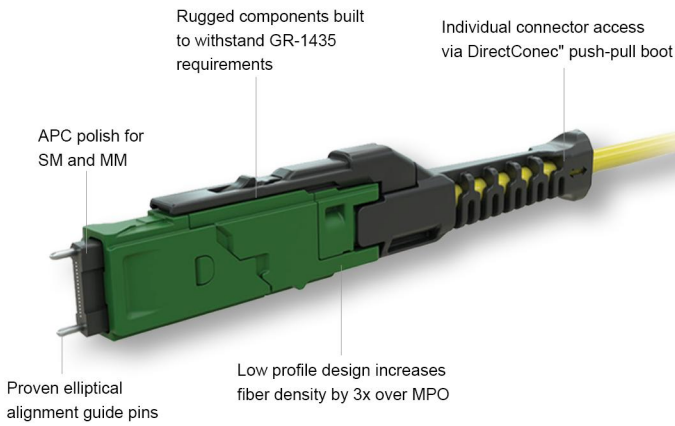
FACEPLAT

BEHIND-THE-WALL

ONBOARD

BACKPLANE

MMC CONNECTOR



SUN CONEC's MMC connector is a Very Small Form Factor (VSFF) multi-fiber optical connector designed for termination of single-mode and multimode fiber cables up to 2.5mm in diameter. The MMC connector employs novel TMT ferrule technology harmonized with the MT or MT-16 alignment structure. Individual connector access in the most extremely dense connector environments is easily accomplished using revolutionary DirectConec™ push-pull boot technology.

Performance:

- 3x cabling port density over the MPO format
- TMT Elite™ low-loss, IEC Grade B insertion loss performance (0.25dB 97% random intermate)
- Tested to Telcordia GR-1435
- 250 μm pitch for compatibility with standard 250 μm and smaller OD optical fibers
- APC for both SM and MM applications
- Cables up to 2.5mm OD

OPTICAL DATA

Footprint size comparison with MPO

MPO

72 x MPO ports

- 864 fibers in 1RU using 12F MPO connectors
- 1,152 fibers in 1RU using 16F MPO connectors
- 1,728 fibers in 1RU using 24F MPO connectors

VS

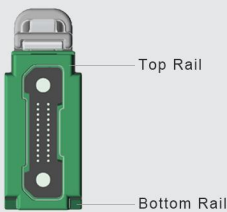
MMC

264 x MMC ports (>3x MPO in 1RU)

- 3,168 fibers in 1RU using 12F MMC connectors
- 4,224 fibers in 1RU using 16F MMC connectors
- 6,336 fibers in 1RU using 24F MMC connectors

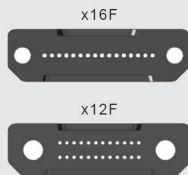
FEATURES

Simplified Polarity Management



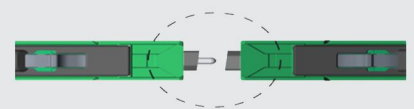
- Bottom rail features ensure connector is installed in correct polarity orientation.

Proven Alignment Structure



- The TMT ferrule format is compliant with the IEC 61755 and 61754 precision alignment structure for MT Ferrules.

Angle End-Face Mating



- MMC solutions enable Low Loss, IEC Grade B insertion loss performance and are APC for superior return loss.

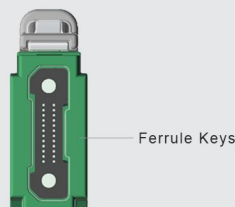
High Density Footprint



1U Panel Max Density with (66) 4-port MMC Adapters	
16F MMC	4224 Fibers
24F MMC	6336 Fibers

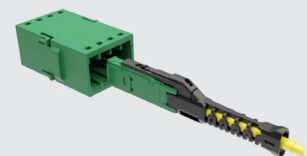
- The MMC connector with DirectConec™ Push-Pull Boot enables functional high density applications.

Error-Free Assembly



- The TMT ferrule is keyed to the MMC housing for error-free assembly.

MMC Engagement Length



- Long precision engagement ensures ferrule stability, enabling a single latch design that maintains the industry-standard 250μm optical pitch.

MPO-LC (24-CORE)

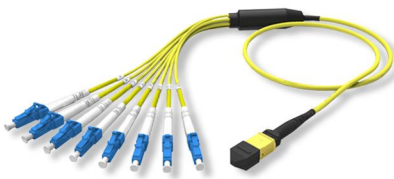
CODE STANDARDS

MP-SCA-S-09-Z-A

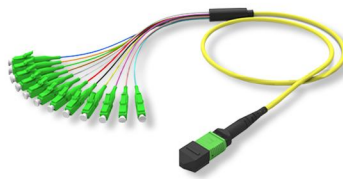
A-SIDE CONNECTOR TYPE		B-SIDE CONNECTOR TYPE		CORE COUNT		FANOUT DIAMETER		MATERIALS		OPTICAL FIBER TYPE	
MP	MPO	LCU	LC/UPC	S	simplex	09	0.9	Z	LSZH	A	G652D
MT	MTP	LCA	LC/APC	D	duplex	12	1.2	V	PVC	B	G657A1
MJ	MTRJ					16	1.6	O	OFNP	C	G657A2
						20	2.0			D	G657B3
						30	3.0			E	G655
										F	OM1
										G	OM2
										H	OM3-150
										J	OM3-300

Note: Custom lengths available to meet your requirements.

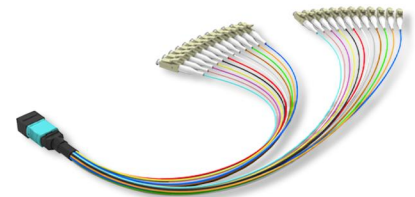
MPO-TYPE FIBRE OPTIC CONNECTOR PATCH CORD



Mini-Cable / Ribbon Cable with (Breakout Cable) 2.0/3.0mm Furcation



Mini-Cable / Ribbon Cable with (Breakout Cable) 0.9mm Furcation



MPO/MTP-0.9mm Furcation

OPTICAL DATA

BRANCH TYPE	PICTURE	ENGINEERING DRAWING
Even Length		
Staggered Length		

COLOR RECOMMENDATION



SM
(G657A1 with yellow Sheath.
Other fiber type, like
G652D/G657A2/G657B3
can be customized too)



OM3
(With aqua Sheath)



OM4
(With aqua, violet or pink sheath)



OM5
(with lime green sheath)

MPO-LC/UNIBOOT (24-CORE)

CODE STANDARDS

MP-SCA-S-09-Z-A

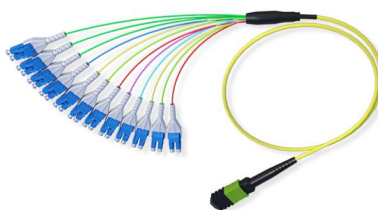
A-SIDE CONNECTOR TYPE		B-SIDE CONNECTOR TYPE		CORE COUNT		OUTER DIAMETER		MATERIALS		OPTICAL FIBER TYPE	
MP	MPO	UN	UNIBOOT	S	simplex	20	2.0	Z	LSZH	A	G652D
MT	MTP			D	duplex	30	3.0	V	PVC	B	G657A1
MJ	MTRJ							O	OFNP	C	G657A2
										D	G657B3
										E	G655
										F	OM1
										G	OM2
										H	OM3-150
										J	OM3-300

Note: Custom lengths available to meet your requirements.

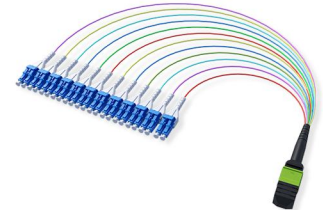
MPO-TYPE FIBRE OPTIC CONNECTOR PATCH CORD



Ribbon Cable to MPO-LC/UNIBOOT
2.0-3.0mm Sleeve Fanout



Ribbon Cable to MPO-LC/UNIBOOT
0.9mm Sleeve Fanout



MPO-LC/UNIBOOT 0.9mm Furcation

OPTICAL DATA

BRANCH TYPE	PICTURE	ENGINEERING DRAWING
Even Length		
Staggered Length		

COLOR RECOMMENDATION



SM
(G657A1 with yellow Sheath.
Other fiber type, like
G652D/G657A2/G657B3
can be customized too)



OM3
(With aqua Sheath)



OM4
(With aqua, violet or pink sheath)



OM5
(with lime green sheath)

FAST FIBER CONNECTOR

- SC Fast Fiber Connectors pg.41-48
- LC Fast Fiber Connectors, FC Fast Fiber Connectors pg.49
- Hot Melt Connector pg.50
- Optical Fiber Cold Splice pg.50
- Waterproof Connector Series: Optitap SC Fast Connector Type pg.51-53

SC FAST FIBER CONNECTOR-W (Series)

LX-W01 (60mm) - APC



LX-W01(60mm)-UPC



LX-W02(53mm) - APC



LX-W02(53mm)-UPC



JIG FUNCTION



Fixed Length



Fixed Length

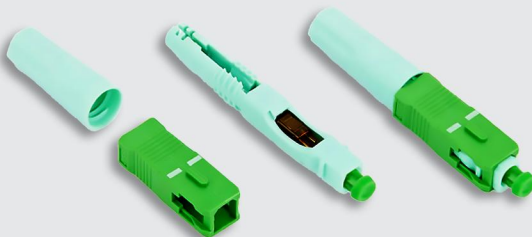


Optical Fiber Coating Can Be Peeled Off

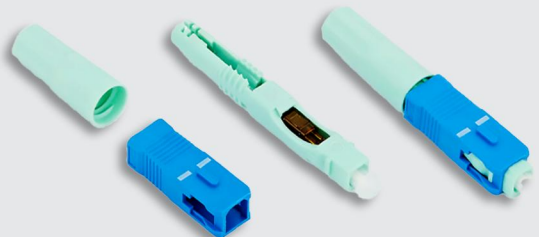


SC FAST FIBER CONNECTOR-R (Series)

LX-R03(53mm)-APC



LX-R03(53mm)-UPC



JIG FUNCTION



Fixed Length



Fixed Length



Optical Fiber Coating Can Be Peeled Off

SC FAST FIBER CONNECTOR-R (Series)

LX-R04(50mm)-APC

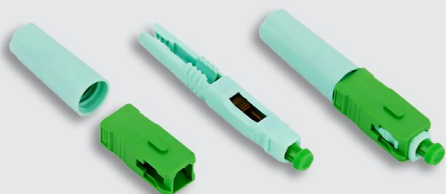


LX-R04(50mm)-UPC



Fixed Length

LX-R05(50mm)-APC

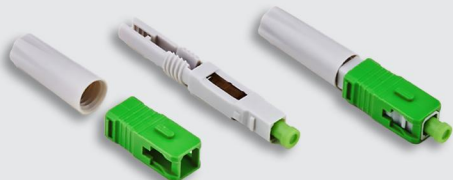


LX-R05(50mm)-UPC



Fixed Length

LX-R06(50mm)-APC



LX-R06(50mm)-UPC



Optical Fiber Coating Can Be Peeled Off

LX-R19(45mm)-APC



LX-R19(45mm)-UPC



Optical Fiber Coating Can Be Peeled Off

LX-R20(51mm)-APC



LX-R20(51mm)-UPC



LX-R21(53mm)-APC

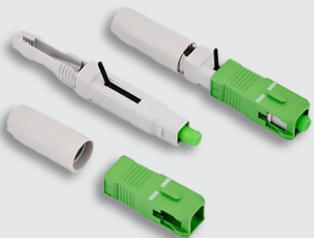


LX-R21(53mm)-UPC



SC FAST FIBER CONNECTOR-Z (Series)

LX-Z31(53mm)-APC



LX-Z31(53mm)-UPC



Fixed Length

LX-Z32(53mm)-APC

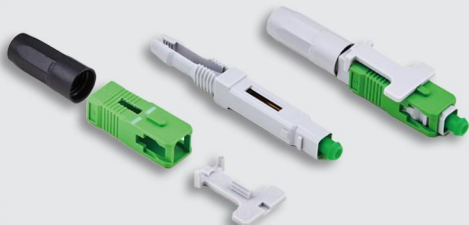


LX-Z32(53mm)-UPC



Optical Fiber Coating Can Be Peeled Off

LX-Z33(53mm)-APC



LX-Z33(53mm)-UPC



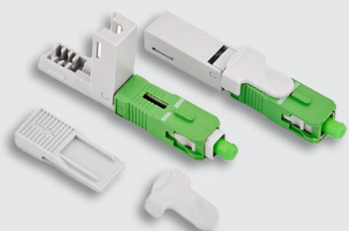
LX-Z34(53mm)-APC



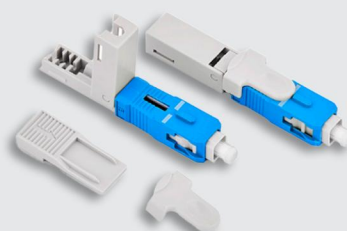
LX-Z34(53mm)-UPC



LX-Z35(53mm)-APC



LX-Z35(53mm)-UPC



LX-Z36(53mm)-APC



LX-Z36(53mm)-UPC



SC FAST FIBER CONNECTOR-T (Series)

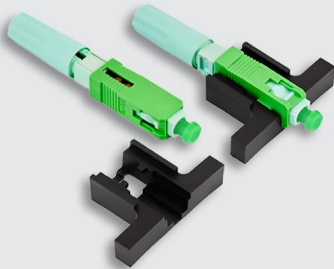
LX-T13(53mm)(Gland type)-APC



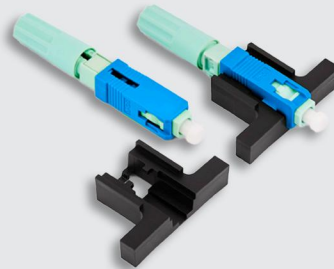
LX-T13(53mm)(Gland type)-UPC



LX-T18(58mm)(Nut type)-APC



LX-T18(58mm)(Nut type)-UPC

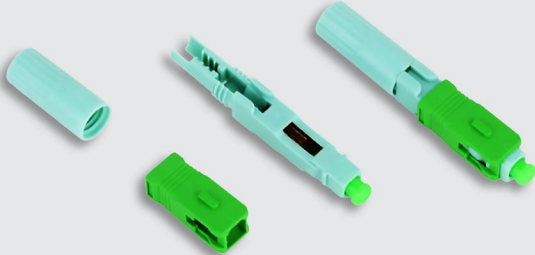


Fixed Length

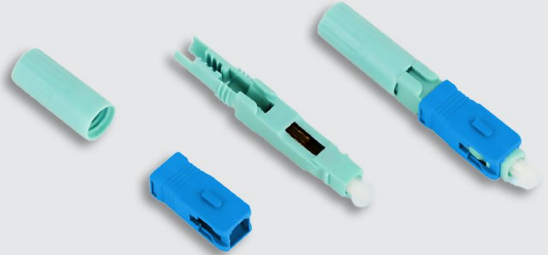
Use the sharp comers to open the flap

SC FAST FIBER CONNECTOR-G (Series)

LX-G55(55mm)-APC



LX-G55(55mm)-UPC



LX-G56(50mm)-APC



LX-G56(50mm)-UPC



JIG FUNCTION



Fixed Length



Fixed Length

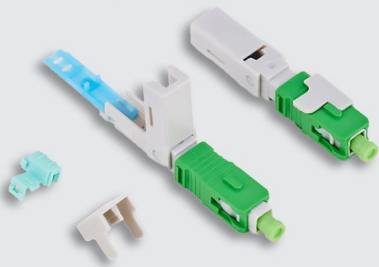


Optical Fiber Coating Can Be Peeled Of

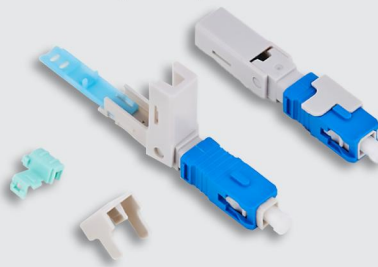


SC FAST FIBER CONNECTOR-Drawer (Series)

LX-DR12-A(52mm)-APC

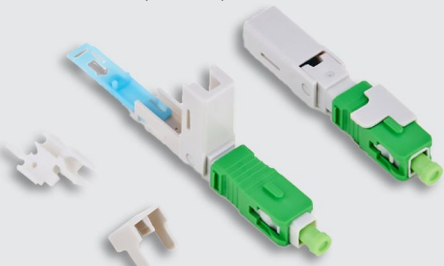


LX-DR12-A(52mm)-UPC

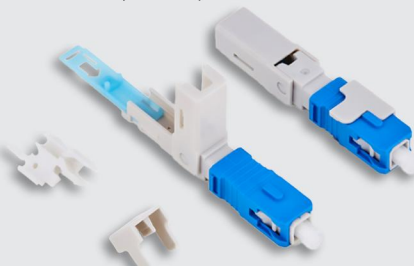


Optical Fiber Coating Can Be Peeled Of
(Use the sharp corners to open the flap)

LX-DR12-B(52mm)-APC

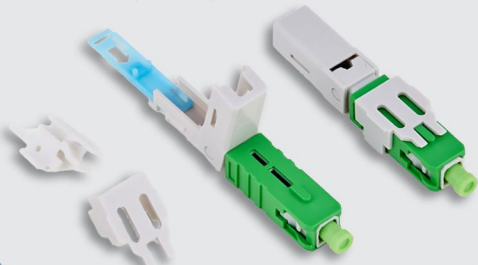


LX-DR12-B(52mm)-UPC

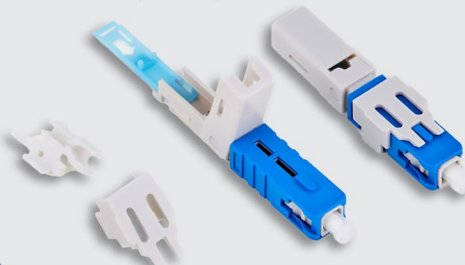


Optical Fiber Coating Can Be Peeled Of
(Use the sharp corners to open the flap)

LX-DR15(52mm)-APC

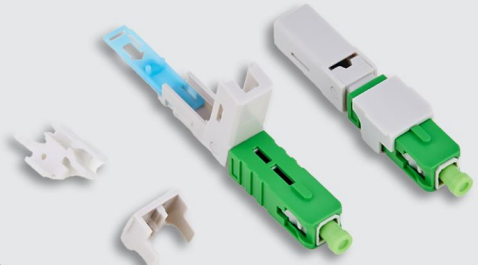


LX-DR15(52mm)-UPC

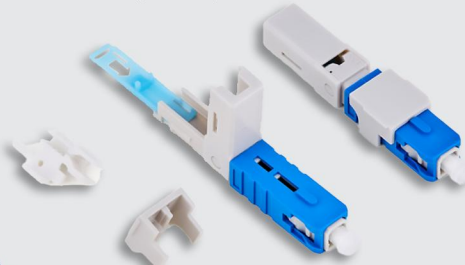


Optical Fiber Coating Can Be Peeled Of
(Use the sharp corners to open the flap)

LX-DR16(52mm)-APC



LX-DR16(52mm)-UPC



Optical Fiber Coating Can Be Peeled Of
(Use the sharp corners to open the flap)

LX-DR17(52mm)-APC



LX-DR17(52mm)-UPC



Optical Fiber Coating Can Be Peeled Of
(Use the sharp corners to open the flap)

SC FAST FIBER CONNECTOR- Routine Series

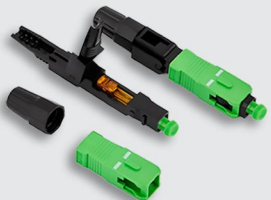
LX-01-A(60mm)-APC



LX-01-A(60mm)-UPC



LX-01-B(60mm)-APC



LX-01-B(60mm)-UPC

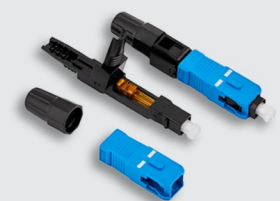


Fixed Length

LX-01-C(55mm)-APC



LX-01-C(55mm)-UPC



LX-02-A(53mm)-APC



LX-02-A(53mm)-UPC



LX-02-B(53mm)-APC



LX-02-B(53mm)-UPC



LX-04-A(50mm)-APC



LX-04-A(50mm)-UPC



Optical Fiber Coating Can Be Peeled Off

LX-04-B(50mm)-APC



LX-04-B(50mm)-UPC



SC FAST FIBER CONNECTOR- Routine Series

LX-07-A(50mm)-APC



LX-07-A(50mm)-UPC



LX-09-A(52mm)-APC

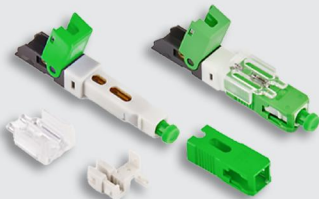


LX-09-A(52mm)-UPC

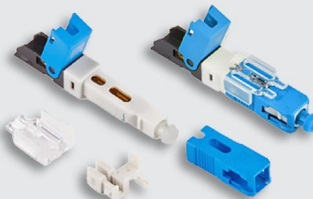


Fixed Length

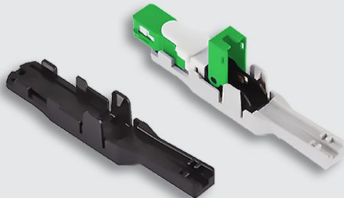
LX-09-B(52mm)-APC



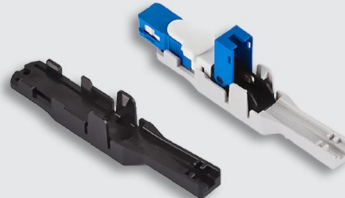
LX-09-B(52mm)-UPC



LX-09 (Operator Aids)



LX-09 (Operator Aids)



LX-10(50mm)-APC



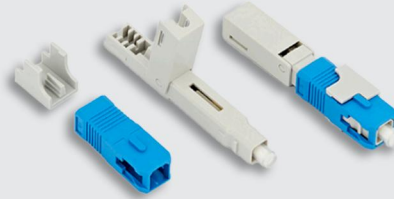
LX-10(50mm)-UPC



LX-11-A(53mm)-APC



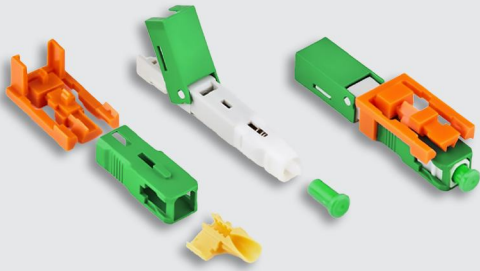
LX-11-A(53mm)-UPC



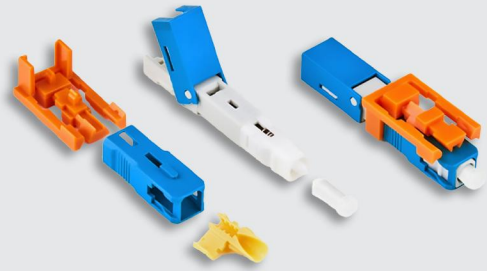
Optical Fiber Coating Can Be Peeled Off

SC FAST FIBER CONNECTOR-LX-14

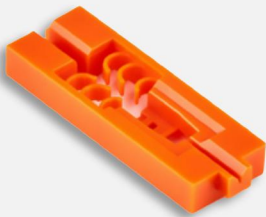
LX-14(52mm)-APC



LX-14(52mm)-UPC



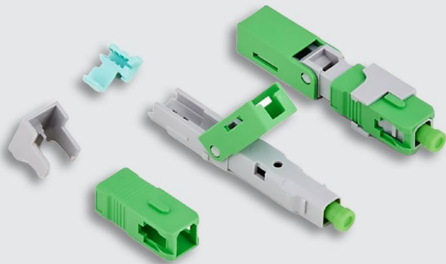
JIG FUNCTION



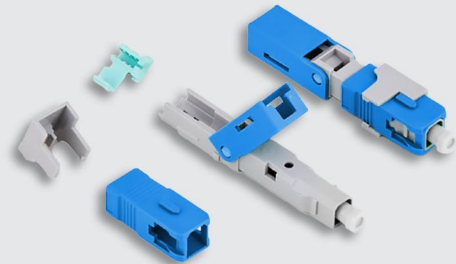
Fixed Length

SC FAST FIBER CONNECTOR-LX-11-B

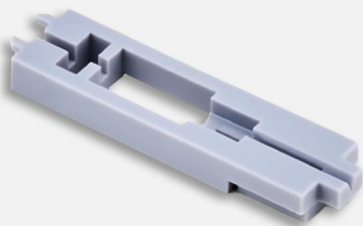
LX-11-B(52mm)-APC



LX-11-B(52mm)-UPC



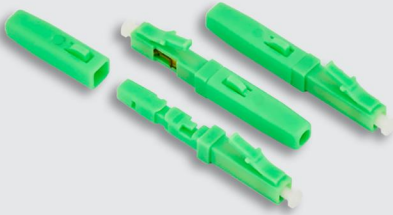
JIG FUNCTION



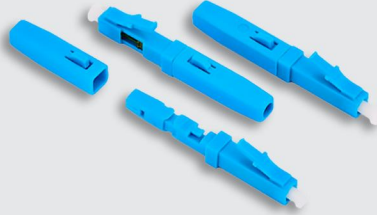
Use the sharp corners to open the flap

LC FAST FIBER CONNECTOR-LC (Series)

LX-LC-A(44mm)-(DROP CABLE)-APC

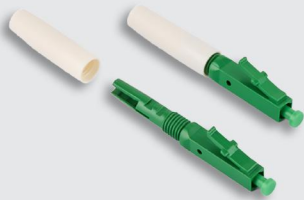


LX-LC-A(44mm)-(DROP CABLE)-UPC

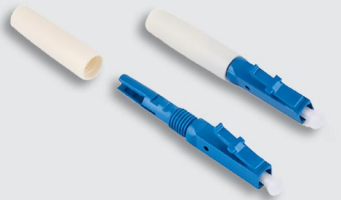


Fixed Length

LX-LC-D(45mm)-(GENERAL TYPE)-APC



LX-LC-D(45mm)-(GENERAL TYPE)-UPC

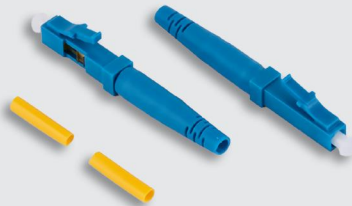


Optical Fiber Coating Can Be Peeled Off

LX-LC-E(47mm)-(ROUND CABLE)-APC



LX-LC-E(47mm)-(ROUND CABLE)-UPC



Optical Fiber Coating Can Be Peeled Off

LX-LC-F(44mm)-0.9MM (CABLE)-APC



LX-LC-F(44mm)-0.9MM (CABLE)-UPC



FC FAST FIBER CONNECTOR-FC (Series)

LX-FC(55mm)-(Crocodile mouth type)-APC



LX-FC(55mm)-(Crocodile mouth type)-UPC



LC HOT MELT CONNECTOR

RL09(0.9mm)-APC



RL09(0.9mm)-UPC



SC HOT MELT CONNECTOR

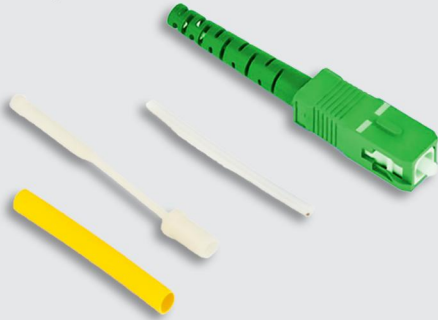
RS58(58mm)-APC



RS58(58mm)-UPC



RS09(0.9mm)-APC



RS09(0.9mm)-UPC



FC HOT MELT CONNECTOR

FC(55mm)-APC



FC(55mm)-UPC



OPTICAL FIBER COLD SPLICE

90mm-Optical fiber cold splice-Ceramic



90mm-Optical fiber cold splice-Metal



WATERPROOF CONNECTOR SERIES: OPTITAP SC FAST CONNECTOR TYPE

MINI SC-L02/APC (Field Installable Fast Waterproof Connector) 2.0,3.0,5.0,2*3,2*1.6,2*5mm



MINI SC-L02/UPC (Field Installable Fast Waterproof Connector) 2.0,3.0,5.0,2*3,2*1.6,2*5mm



MINI SC-L04/APC (Field Installable Fast Waterproof Connector) 2.0,3.0,5.0,2*3,2*1.6,2*5mm



MINI SC-L04/UPC (Field Installable Fast Waterproof Connector) 2.0,3.0,5.0,2*3,2*1.6,2*5mm



MINI SC-L09/APC (Field Installable Fast Waterproof Connector) 2*1.6,2*3,2*5mm



MINI SC-L09/UPC (Field Installable Fast Waterproof Connector) 2*1.6,2*3,2*5mm



MINI SC-L21/APC (Field Installable Fast Waterproof Connector) 2.0,3.0,5.0,2*3,2*1.6,2*5mm



MINI SC-L21/UPC (Field Installable Fast Waterproof Connector) 2.0,3.0,5.0,2*3,2*1.6,2*5mm



MINI SC-G55/APC (Field Installable Fast Waterproof connector) 5.0mm



MINI SC-G55/UPC (Field Installable Fast Waterproof connector) 5.0mm



MINI SC-(Hot Melt)/APC 2.0,3.0,5.0,2*3,2*1.6,2*5mm connector) 5.0mm



MINI SC-(Hot Melt)/UPC 2.0,3.0,5.0,2*3,2*1.6,2*5mm



WATERPROOF CONNECTOR SERIES: OPTITAP SC FAST CONNECTOR TYPE

*OPTITAP SC-L02/APC (Field Installable Fast Waterproof Connector) 2.0,3.0,5.0,2*3,2*1.6,2*5mm*



*OPTITAP SC-L02/UPC (Field Installable Fast Waterproof Connector) 2.0,3.0,5.0,2*3,2*1.6,2*5mm*



*OPTITAP SC-L04/APC (Field Installable Fast Waterproof Connector) 2.0,3.0,5.0,2*3,2*1.6,2*5mm*



*OPTITAP SC-L04/UPC (Field Installable Fast Waterproof Connector) 2.0,3.0,5.0, 2*3, 2*1.6,2*5mm*



WATERPROOF CONNECTOR SERIES: MINI SC FAST CONNECTOR TYPE

*OPTITAP SC-L09/APC(Field Installable Fast Waterproof Connector) 2*1.6,2*3,2*5mm*



*OPTITAP SC-L09/UPC (Field Installable Fast Waterproof Connector) 2*1.6,2*3,2*5mm*



*OPTITAP SC-L21/APC (Field Installable Fast Waterproof Connector) 2.0,3.0,5.0,2*3,2*1.6,2*5mm*



*OPTITAP SC-L21/UPC (Field Installable Fast Waterproof Connector) 2.0,3.0,5.0,2*3,2*1.6,2*5mm*



OPTITAP SC-G55/APC Field Installable Fast Waterproof connector) 5.0mm



OPTITAP SC-G55/UPC (Field Installable Fast Waterproof Connector) 5.0mm



SUN CONEC

-Singapore & Malaysia-

TERMINAL BOX

▪ Plastic Splitter Box

pg.54-61

PLASTIC SPLITTER BOX

FAT-2A
2-Core Optical Cable Distribution Box
Size:167*102*31MM



FAT-4A
4-Core Optical Cable Distribution Box
Size:186*116*41MM



FAT-4B
4-Core Optical Cable Distribution Box
Size:191*120*44MM



FAT-4C
4-Core Optical Cable Distribution Box
Size:190*55*41MM



FAT-6A
6-Core Optical Cable Distribution Box
Size:186*116*41MM



FAT-8F
8-Core Optical Cable Distribution Box
Size:199*160*46MM



FAT-8A
8-Core Optical Cable Distribution Box
Size:213*163*47MM



FAT-8D
8-Core Optical Cable Distribution Box
Size:225*220*55MM



FAT-8E
8-Core Optical Cable Distribution Box
Size:245*203*69MM



FAT-8Y
8-Core Optical Cable Distribution Box
Size:190*55*41MM



FAT-8B
8-Core Optical Cable Distribution Box
Size:227*181*54.5MM



FAT-8T
8-Core Optical Cable Distribution Box
Size:235*125*50MM

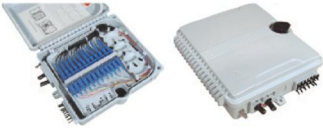


FAT-8C
8-Core Optical Cable Distribution Box
Size:225*220*55MM



PLASTIC SPLITTER BOX

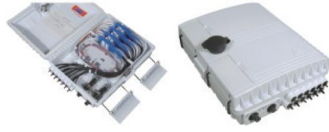
FAT-12A-I
12-Core Optical Cable Distribution Box
Size:225*200*65MM



FAT-12A-II
8-Core Optical Cable Distribution Box
Size:225*200*65MM



FAT-12B-I
12-Core Optical Cable Distribution Box
Size:250*200*72MM



FAT-12B-II
8-Core Optical Cable Distribution Box
Size:250*200*72MM



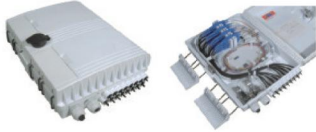
FAT-12C-I
12-Core Optical Cable Distribution Box
Size:220*200*50MM



FAT-12C-II
8-Core Optical Cable Distribution Box
Size:220*200*50MM



FAT-16B-I
16-Core Optical Cable Distribution Box
Size:295*220*85MM



FAT-16B-II
16-Core Optical Cable Distribution Box
Size:295*220*85MM



FAT-24A-I
24-Core Optical Cable Distribution Box
Size:320*240*100MM



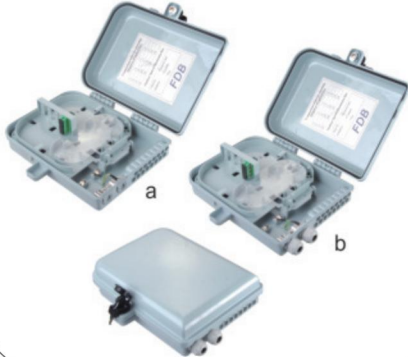
FAT-24A-II
16-Core Optical Cable Distribution Box
Size:320*240*100MM



FAT-16D
16-Core Optical Cable Distribution Box
Size:300*230*75MM



FAT-16C
16-Core Optical Cable Distribution Box
Size:300*230*75MM



FAT-16L
16-Core Optical Cable Distribution Box
Size:327*258*88MM



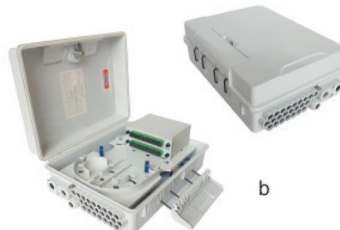
FAT-16T
16-Core Optical Cable Distribution Box
Size:220*140*55MM



FAT-24C-I
24-Core Optical Cable Distribution Box
Size:340*250*110MM



FAT-24C-II
16-Core Optical Cable Distribution Box
Size:340*250*110MM



FAT-24B-I
24-Core Optical Cable Distribution Box
Size:320*240*100MM



PLASTIC SPLITTER BOX

FAT-24C-I
24-Core Optical Cable Distribution Box
Size:340*250*110MM



FAT-2C-II
16-Core Optical Cable Distribution Box
Size:340*250*110MM



FAT-24B-I
24-Core Optical Cable Distribution Box
Size:320*240*100MM



FAT-24B-II
16-Core Optical Cable Distribution Box
Size:320*240*100MM



FAT-W-2
4-Core Optical Cable Distribution Box
Size:208*153*52MM



FAT-W-3
12/24-Core Optical Cable Distribution Box
Size:258*186*61MM



FAT-W-4
4-Core Optical Cable Distribution Box
Size:208*153*52MM



FATB-0416S
16-Core Optical Cable Distribution Box
Size:335*210*95MM



FATB-0416L
16-Core Optical Cable Distribution Box
Size:335*210*95MM



FATB-0416A
16-Core Optical Cable Distribution Box
Size:335*210*95MM



FATB-0416MC
16-Core Optical Cable Distribution Box
Size:335*210*95MM



FATB-0424A
24-Core Optical Cable Distribution Box
Size:335*210*95MM



FATB-0424S
24-Core Optical Cable Distribution Box
Size:335*210*95MM



FATB-0424N
24-Core Optical Cable Distribution Box
Size:335*210*95MM



FATM-0209R
24-Port Optical Cable Distribution Box
Size:287*172*102MM



PLASTIC SPLITTER BOX

FATB-0408R
8-Core Optical Cable Distribution Box
Size:335*210*95MM



FATB-0216R
16-Core Optical Cable Distribution Box
Size:335*210*95MM



FATM-0416L
16-Core Optical Cable Distribution Box
Size:274*175*82MM



FATM-0416S
16-Core Optical Cable Distribution Box
Size:274*175*82MM



FATB-0216R-I
16-Core Optical Cable Distribution Box
Size:208*241*117MM



FATM-0416M-A
16-Core Optical Cable Distribution Box
Size:287*172*102MM



FATM-0416M-B
16-Core Optical Cable Distribution Box
Size:287*172*102MM



FATC-001
16-Core Optical Cable Distribution Box
Size:385*245*130MM



FATC-002
24-Core Optical Cable Distribution Box
Size:385*245*130MM



FATC-003
24-Core Optical Cable Distribution Box
Size:385*245*150MM



FATC-004
288-Core Mechanical Splice Closure
Size:395*245*130MM



FATC-005
8-Core Optical Cable Distribution Box
Size:385*245*130MM



FATC-006
16-Core Optical Cable Distribution Box
Size:385*245*150MM



FATC-007
24-Port Optical Cable Distribution Box
Size:385*245*150MM



PLASTIC SPLITTER BOX

AFAT-002
16-Core Optical Cable Distribution Box
Size:285*190*110MM



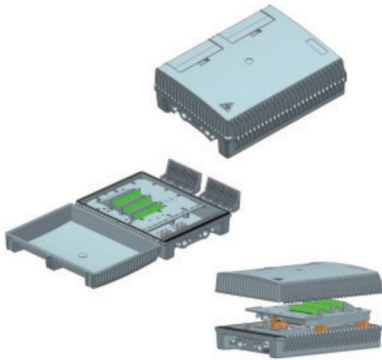
FOP-16A
Size:550*230MM



FK-CTO-16MC
16-Core Optical Cable Distribution Box
Size:316*250*126MM



FS-24
24-Core Optical Cable Distribution Box
Size:240*300*90MM



CTO-48P
48-Core Building Entrance Terminal
Size:450*180*150MM



OTB-8A
8-Core Optical Cable Distribution Box
Size:295*270*75MM



OTB-12B
12-Core Optical Cable Distribution Box
Size:295*270*75MM



OTB-16A
16-Core Optical Cable Distribution Box
Size:295*260*95MM



OTB-16B
16-Core Optical Cable Distribution Box
Size:340*280*100MM



OTB-16C
16-Core Optical Cable Distribution Box
Size:340*260*110MM



OTB-24B
24-Core Optical Cable Distribution Box
Size:340*260*110MM



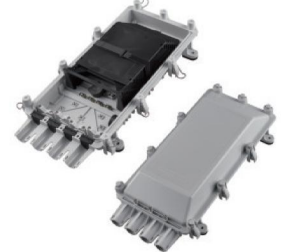
GJS-2016
16-Core Optical Cable Distribution Box
Size:320*190*100MM



GJS-2021
8-Core Optical Cable Distribution Box
Size:300*186.5*59MM



FAU-256
256-Core Splice Closure
Size:290*555*106MM



PLASTIC SPLITTER BOX

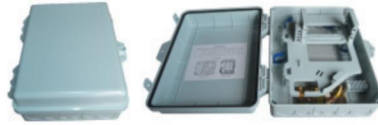
OTB-32A
32-Core Optical Cable Distribution Box
Size:425*345*125MM



OTB-48A
48-Core Optical Cable Distribution Box
Size:425*345*125MM



OTB-16D
16-Core Optical Cable Distribution Box
Size:310*270*120MM



OTB-24C
24-Core Optical Cable Distribution Box
Size:310*270*120MM



OTB-16E
16-Core Optical Cable Distribution Box
Size:320*265*120MM



OTB-24E
24-Core Optical Cable Distribution Box
Size:320*265*120MM



OTB-21B
32-Core Optical Cable Distribution Box
Size:320*265*120MM



OTB-48B
48-Core Optical Cable Distribution Box
Size:320*265*120MM



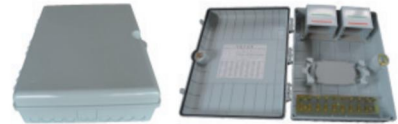
CTB-32C
32-Core Building Entrance Terminal
Size:400*310*125MM



CTB-32C
32-Core Building Entrance Terminal
Size:400*310*125MM



OTB-64A
64-Core Optical Cable Distribution Box
Size:490*400*150MM



OTB-96A
96-Core Optical Cable Distribution Box
Size:490*400*150MM



GJS-D022
144-Core Splice Closure
Size:470*210MM



GJS-D001
96-Core Splice Closure
Size:440*190MM



GJS-D015
48-Core Splice Closure
Size:299*178MM



GJS-D023
288-Core Splice Closure
Size:515*310MM



GJS-D033
144-Core Splice Closure
Size:475*210MM



GJS-D022-A
144-Core Fusion Splice Closure
Size:450*c230



GJS-D033-A
144-Core Mechanical Splice Closure
Size:450*c230

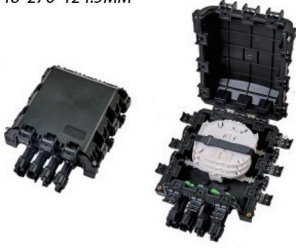


PLC

PLC

PLASTIC SPLITTER BOX

FOSC-M31
8-Port Core Optic Terminal Box
Size:248*276*124.5MM



FOSC-M33
16-Port Core Optic Terminal Box
Size:359*277*120MM



FRB-1A
Single Port Core Optic Faceplate
Size:115*86*25MM



FBR-1B
Dual Port Core Optic Faceplate
Size:115*86*25MM



FOSC-A08
8-Port Termination Box
Size:182*183MM



FRB-2A
Dual Port Fiber Optic Faceplate
Size:84*130*24MM



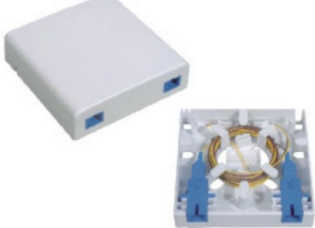
FRB-2B
Dual Port Fiber Optic Faceplate
Size:100*80*23MM



FRB-3A
Two-Gang Single Port Fiber Optic Wall Plate
Size:123*80*25MM



FRB-2C
Dual Port Fiber Optic Wall Plate (Single Gang)
Size:86*86*24MM



FRB-2E
Dual Port Fiber Optic Faceplate
Size:90*90*16MM



FRB-2B-I
Dual Port Fiber Optic Faceplate
Size:105*82*22MM



FRB-1C
Single Port Fiber Optic Faceplate
Size:145*89*16MM



FRB-2R
Fiber Optic Wall Plate Kit with Termination Box
Size:70*117*19MM



FRB-2P
Dual Port Fiber Optic Faceplate
Size:80*115*25MM



PLASTIC SPLITTER BOX

FRB-2D
Single Port Fiber Optic Faceplate
Size:86*86*22MM



FRS-2F
2-Fiber Wall Plate Kit with Termination Box
Size:116*70*15MM



FRB-2L
Dual Port Fiber Optic Faceplate
Size:102*80*25MM



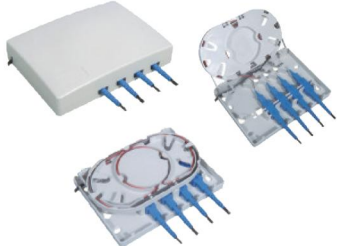
FRB-3A-I
Single Port Fiber Optic Faceplate
Size:123*90*26MM



FRB-4A
4-Port Termination Box
Size:100.5*80.5*28.8MM



FRB-4B
4-Port Termination Box
Size:150*110*33MM



FRB-4C
4-Port Termination Box
Size:100*84*30MM



FRB-12A
In-Wall ONT Enclosure



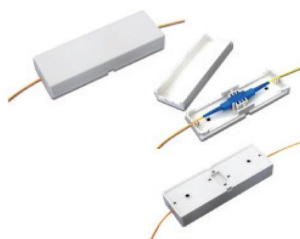
DSB-4A
FTTH Drop Cable Closure
Size:180*72*21.5MM



DSB-1A
Size:155*47*17MM



DSB-1B
Size:150*50*25MM



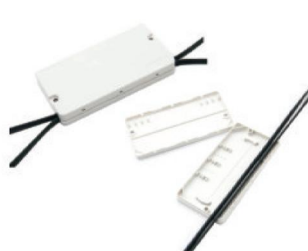
DSB-3A



DSB-1C
Size:18*11*85MM



DSB-2A
Size:48*10*95MM



SKD-24

SKD-25



SUN CONEC

-Singapore & Malaysia-



Sale and Service

"Integrity in Sales, Excellence in Service."

Trust is the foundation of our growth. By prioritizing superior quality and responsive service, we build lasting relationships with our clients.

Our unwavering commitment:

"To cooperate sincerely and share prosperity with all partners."

Rontaray Ningbo

Headquarters / RD Center
Ferrule & Sleeve Factory
Email:info@rontaray.com

Rontaray Hunan

Assembly Factory
Patch cord/MPO/Fast connector
Email:info@rontaray.com

Sunconec Singapore

Sales Company
Email:official@sunconec.com

Sunconec Malaysia

Ferrule & Sleeve Factory
Medical optical imaging/MT Ferrule
Email:official@sunconec.com

WWW.RONTARAY.COM
WWW.SUNCONEC.COM