

SUN CONEC
-Singapore & Malaysia-

Single-fiber Patch cord



Make Connections Much Simpler

CONTENTS

Content	Page
Connector Performance	pg.01
Product Naming, Standard Patch Cable Structure	pg.02-03
SC Connectors	pg.04-05
FC Connectors	pg.06
ST Connectors	pg.08
LSH Connectors	pg.09
LC Connectors	pg.10-11
LC/Uniboot Connectors	pg.12-13
MTRJ Connectors	pg.14
SN Connectors	pg.15-16
MDC Connectors	pg.17-18
LC-Whoosh Connectors	pg.19
LC-ENT Connectors	pg.20
Weatherproof Connectors	pg.21
Indoor Fan-Out Kit Connectors	pg.22
Outdoor Fan-Out Kit Connectors	pg.23

Insertion Loss (IL) and Return Loss (RL)

	Optical Performance	APC	UPC
Standard	IL (dB)	0.25	0.25
Low Insertion Loss		0.15	0.15
Standard	RL (dB)	60	50
High Return Loss		65	55

Random Mated

Attenuation Grades	Description	Test method
Grade A** (Undefined in IEC)	≤0.05dB mean, ≤0.10dB max, for ≥97% of connections	IEC 61300-3-34 method1
Grade A* (Undefined in IEC)	≤0.07dB mean, ≤0.15dB max, for ≥97% of connections	IEC 61300-3-34 method1
Grade B	≤0.12dB mean, ≤0.25dB max, for ≥97% of connections	IEC 61300-3-34 method1

Fiber Endface Geometry Comparison

Parameter	APC	UPC
Radius (mm)	5~12	10~25
Apex Offset (μm)	0~50	0~50
Fiber Height (mm)	-100~+50	-100~+50
Angle Deviation (°)	7.7~8.3	N/A
Key Angle (°)	±0.3	N/A

OPTICAL PATCHCORD

SCU-SCA-C01-009-Z-B

A-SIDE CONNECTOR TYPE		B-SIDE CONNECTOR TYPE		CORE COUNT		OUTER DIAMETER		MATERIALS		OPTICAL FIBER TYPE	
SCU	SC/UPC	SCU	SC/UPC	C01	simplex	O09	0.9mm	Z	LSZH	A	G652D
SCA	SC/APC	SCA	SC/APC	C02	duplex	O12	1.2mm	V	PVC	B	G657A1
SCT	SC/APC(step)	SCT	SC/APC(step)	C04	4-core	O16	1.6mm	N	Nylon	C	G657A2
FCU	FC/UPC	FCU	FC/UPC	C08	8-core	O20	2.0mm	E	PE	D	G657B3
FCA	FC/APC	FCA	FC/APC	C12	12-core	O30	3.0mm	H	Hytrek	E	G655
STU	ST/UPC	STU	ST/UPC	C24	24-core			U	PU	F	OM1
STA	ST/APC	STA	ST/APC	C48	48-core			B	PBT	G	OM2
LCU	LC/UPC	LCU	LC/UPC		...			T	TPE	H	OM3-150
LCA	LC/APC	LCA	LC/APC							J	OM3-300
UN	UNIBOOT	UN	UNIBOOT							K	OM4
LSH	LSH	LSH	LSH							L	OM5

Note: Custom lengths available to meet your requirements.

STANDARD PATCH CORD STRUCTURE

LC-TYPE FIBRE OPTIC CONNECTOR PATCH CORD



SC-TYPE FIBRE OPTIC CONNECTOR PATCH CORD



FC-TYPE FIBRE OPTIC CONNECTOR PATCH CORD



ST-TYPE FIBRE OPTIC CONNECTOR PATCH CORD



STANDARD PATCHCORD STRUCTURE

LSH-TYPE FIBRE OPTIC CONNECTOR PATCH CORD



LSH-LSH



LSH-LC



LSH-SC



LSH-ST



LSH-FC

DUPLEX FIBER OPTIC PATCH CORD



LC-LC



SC-SC



FC-FC



ST-ST



LSH-LSH

FIBER TYPE



SM
recommended Yellow



OM1/OM2
recommended Orange



OM3
recommended Aqua



OM4
recommended Violet



OM5
recommended Lime Green

COMMON CABLE STRUCTURES

SINGLE-CORE CABLE SERIES



2.0/3.0mm simplex cable

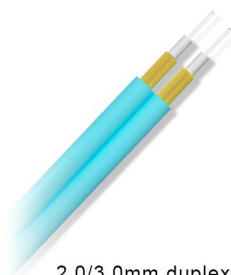


2.0/3.0mm simplex
armoured optical cable



2.0/3.0mm min cable
(2 fibers)

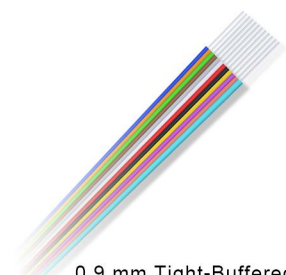
DUAL-CORE CABLE SERIES



2.0/3.0mm duplex
optical cable



2.0/3.0mm duplex
armoured fibre optic cable

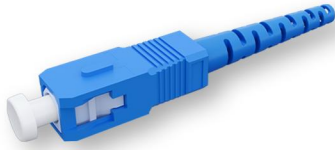


0.9 mm Tight-Buffered
Fiber Cable with 12-color code

SC CONNECTOR

CODE STANDARDS

SCU-BU-D20-GN



SC/UPC Connector



SC/APC Connector

CONNECTOR	ENCLOSURE COLOR	BOOT TYPE(mm)	BOOT COLOR
SCU SC/UPC Simplex Connector	BU BLUE	D09 0.9 standard	GN GREEN
SCA SC/APC Simplex Connector	GN GREEN	D20 2.0 standard	BU BLUE
DSCU SC/APC Duplex Connector	BG BEGI	S20 2.0 Short Tail Boot	BG BEGI
DSCA SC/UPC Duplex Connector	AQ AQUA	D30 3.0 standard	AQ AQUA
	VT VIOLET	S30 3.0 Short Tail Boot	VT VIOLET
	LM LIME GREEN	D16 1.6 standard	LM LIME GREEN
		D12 1.2 standard	

Performance:

- Sun Conec's connectors strictly follow the test standards of Telcordia GR-326-CORE
- Designed to exceed the requirements of Verizon FOCTPR 9409
- The dimensional design complies with IEC 61754-4
- Can be selected according to the material to meet the UL94 flame retardant standards
- The use of our different ferrule types (Premium, Super Premium, Ultra Premium) enables performance matching from standard to high and ultra-high performance interconnection requirements
- Insertion/return loss performance not only exceeds the top 10% of industry benchmarks, but also far exceeds the performance requirements of the Grade B interchange test in the IEC 61753-1 standard

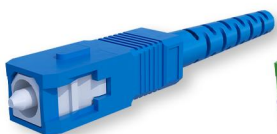
PRODUCT SELECTION (SIMPLEX)

ADAPTED CABLE OD	BOOT TYPE	PICTURE	ENGINEERING DRAWING
0.9mm Simplex	Standard Boot		
1.2mm Simplex	Standard Boot		
1.6mm Simplex	Standard Boot		
2.0mm Simplex	Standard Boot		
3.0mm Simplex	Standard Boot		
2.0/3.0mm Simplex	45° Angle		

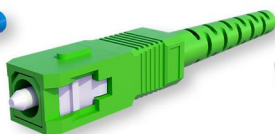
PRODUCT SELECTION (DUPLIX)

ADAPTED CABLE OD	BOOT TYPE	PICTURE	ENGINEERING DRAWING
0.9mm Simplex	Standard Boot		
1.2mm Simplex	Standard Boot		
1.6mm Simplex	Standard Boot		
2.0mm Simplex	Standard Boot		
3.0mm Simplex	Standard Boot		
2.0/3.0mm Duplex	45° Angle		
2.0/3.0mm Duplex	90° Angle		

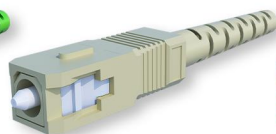
COLOR RECOMMENDATION



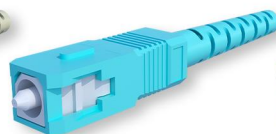
SM
UPC



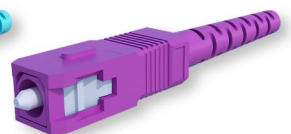
SM
APC



MM
OM1/2



MM
OM3/4



MM
OM4

FC CONNECTOR

CODE STANDARDS

FC/UPC-MT-D09-GN



FC-APC Connector



FC-UPC Connector



2.0mm Standard Boot

CONNECTOR		ENCLOSURE COLOR		BOOT TYPE(mm)		BOOT COLOR	
FC/UPC	FC/UPC Connector	ZA	ZINC ALLOY	D09	0.9 standard	GN	GREEN
FC/APC	FC/APC Connector	CO	COPPER	D12	1.2 standard	BU	BLUE
				D16	1.6 standard	BG	BEGI
				D20	2.0 standard	AQ	AQUA
				D30	3.0 standard	BK	BLACK
				D46	4.6 standard		

Performance:

- Sun Conec's connectors strictly follow the test standards of Telcordia GR-326-CORE
- Designed to exceed the requirements of Verizon FOCTPR 9409
- The dimensional design complies with IEC 61754-13
- Can be selected according to the material to meet the UL94 flame retardant standards
- The use of our different ferrule types (Premium, Super Premium, Ultra Premium) enables performance matching from standard to high and ultra-high performance interconnection requirements
- Insertion/return loss performance not only exceeds the top 10% of industry benchmarks, but also far exceeds the performance requirements of the Grade B interchange test in the IEC 61753-1 standard.

PRODUCT SELECTION

ADAPTED CABLE OD	BOOT TYPE	PICTURE	ENGINEERING DRAWING
0.9mm Simplex	Standard Boot		
2.0mm Simplex	Standard Boot		
3.0mm Simplex	Standard Boot		

ST CONNECTOR

CODE STANDARDS

ST/UPC-MT-D09-GN



ST-APC Connector



ST-UPC Connector



2.0mm Standard Boot

CONNECTOR		ENCLOSURE COLOR		BOOT TYPE(mm)		BOOT COLOR	
ST/UPC	ST/UPC Connector	ZA	ZINC ALLOY	D09	0.9 standard	GN	GREEN
ST/APC	ST/APC Connector	CO	COPPER	D12	1.2 standard	BU	BLUE
				D16	1.6 standard	BG	BEGI
				D20	2.0 standard	AQ	AQUA
				D30	3.0 standard	BK	BLACK
				D46	4.6 standard		

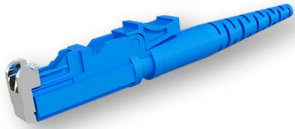
Performance:

- Sun Conec's connectors strictly follow the test standards of Telcordia GR-326-CORE
- Designed to exceed the requirements of Verizon FOCTPR 9409
- The dimensional design complies with IEC 61754-2
- Can be selected according to the material to meet the UL94 flame retardant standards
- The use of our different ferrule types (Premium, Super Premium, Ultra Premium) enables performance matching from standard to high and ultra-high performance interconnection requirements
- Insertion/return loss performance not only exceeds the top 10% of industry benchmarks, but also far exceeds the performance requirements of the Grade B interchange test in the IEC 61753-1 standard.

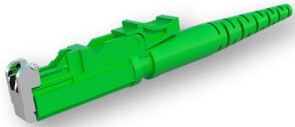
PRODUCT SELECTION

ADAPTED CABLE OD	BOOT TYPE	PICTURE	ENGINEERING DRAWING
0.9mm Simplex	Standard Boot		
2.0mm Simplex	Standard Boot		
3.0mm Simplex	Standard Boot		

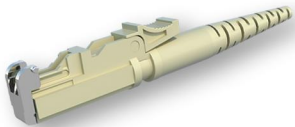
LSH CONNECTOR



LSH/UPC Connector



LSH/APC Connector



LSH/APC Connector

CODE STANDARDS

LSU-BU-D20-GN

CONNECTOR	ENCLOSURE COLOR	BOOT TYPE(mm)	BOOT COLOR
LSU LSH/UPC Connector	BU BLUE	D09 0.9 standard	GN GREEN
LSA LSH/APC Connector	GN GREEN	D20 2.0 standard	BU BLUE
	BG BEIGE	D30 3.0 standard	BG BEIGE

Performance:

- Insertion Loss: ≤ 0.3 dB typical for single-mode
- Widely used in telecom networks, test equipment, fiber-optic CATV, and LANs (Local Area Networks)
- The dimensional design complies with IEC 61754, GR-326, TIA/EIA 568-B, and YDT 1272
- Repeatability: ≤ 0.2 dB
- Return loss:
Single-mode: UPC ≥ 50 dB, APC ≥ 60 dB
Multi-mode: ≥ 25 dB

PRODUCT SELECTION

ADAPTED CABLE OD	BOOT TYPE	PICTURE	ENGINEERING DRAWING
0.9mm Simplex	Standard Boot		
2.0mm Simplex	Standard Boot		
3.0mm Simplex	Standard Boot		

LC CONNECTOR

CODE STANDARDS

LCU-BU-D20-GN



LC/UPC Connector



LC/APC Connector

CONNECTOR	ENCLOSURE COLOR	BOOT TYPE(mm)	BOOT COLOR
LCU LC/UPC Simplex Connector	BU BLUE	D09 0.9 standard	GN GREEN
LCA LC/APC Simplex Connector	GN GREEN	D20 2.0 standard	BU BLUE
DLCU LC/APC Duplex Connector	BG BEGI	S20 2.0 Short Tail Boot	BG BEIGE
DLCA LC/UPC Duplex Connector	AQ AQUA	D30 3.0 standard	AQ AQUA
	VT VIOLET	S30 3.0 Short Tail Boot	VT VIOLET
	LM LIME GREEN	D16 1.6 standard	LM LIME GREEN
		D12 1.2 standard	

Performance:

- Sun Conec's connectors strictly follow the test standards of Telcordia GR-326-CORE
- Designed to exceed the requirements of Verizon FOCTPR 9409
- The dimensional design complies with IEC 61754-20
- Can be selected according to the material to meet the UL94 flame retardant standards
- The use of our different ferrule types (Premium, Super Premium, Ultra Premium) enables performance matching from standard to high and ultra-high performance interconnection requirements
- Insertion/return loss performance not only exceeds the top 10% of industry benchmarks, but also far exceeds the performance requirements of the Grade B interchange test in the IEC 61753-1 standard

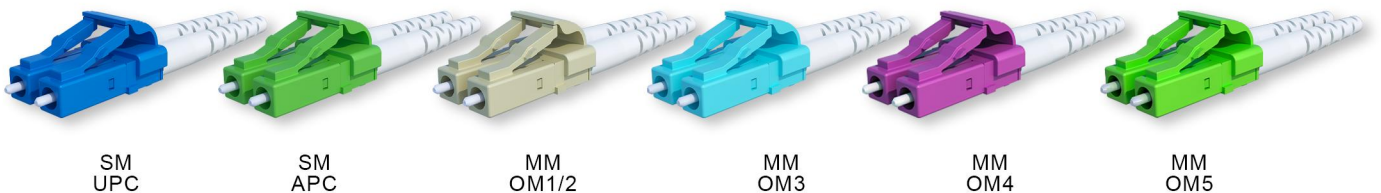
PRODUCT SELECTION (SIMPLEX)

ADAPTED CABLE OD	BOOT TYPE	PICTURE	ENGINEERING DRAWING
0.9mm Simplex	Standard Boot		
1.2mm Simplex	Standard Boot		
1.6mm Simplex	Standard Boot		
2.0mm Simplex	Standard Boot		
3.0mm Simplex	Standard Boot		
2.0/3.0mm Simplex	45° Angle		

PRODUCT SELECTION (DUPLIX)

ADAPTED CABLE OD	BOOT TYPE	PICTURE	ENGINEERING DRAWING
0.9mm Duplex	Standard Boot		
1.2mm Duplex	Standard Boot		
1.6mm Duplex	Standard Boot		
2.0mm Duplex	Standard Boot		
3.0mm Duplex	Standard Boot		
2.0/3.0mm Duplex	45° Angle		
2.0/3.0mm Duplex	90° Angle		

COLOR RECOMMENDATION



SM
UPC

SM
APC

MM
OM1/2

MM
OM3

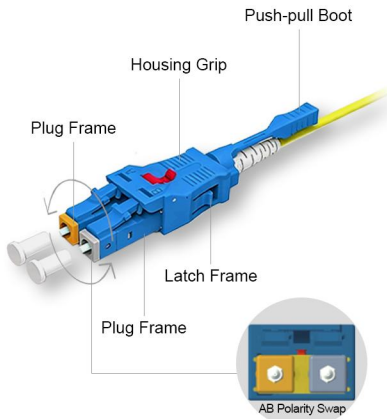
MM
OM4

MM
OM5

LC/UNIBOOT CONNECTOR

CODE STANDARDS

LCU-BU-D20-GN



LC/UNIBOOT Connector

CONNECTOR	ENCLOSURE COLOR	BOOT TYPE(mm)	BOOT COLOR
LCU UNIBOOT Connector	BU BLUE	D20 2.0 standard	WH WHITE
	GN GREEN	D30 3.0 standard	
	BG BEIGE		
	AQ AQUA		

Performance:

- The Uniboot connector utilizes single-tube dual-core optical cables, facilitating cable management and enhancing thermal dissipation within cabling systems.
- Available in push-pull variants, the pull rod enables straightforward insertion or removal of patch cords.
- Its structural design permits effortless interchangeability of fibre polarity.
- Built with high performance material, Multiple colors available.

ORDERING INFORMATION


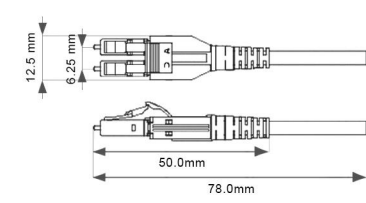
Function		Push-Pull	Switchable Polarity
Type	Matching the cable OD	Picture	Engineering Drawing
Style 1	2.0/3.0mm		

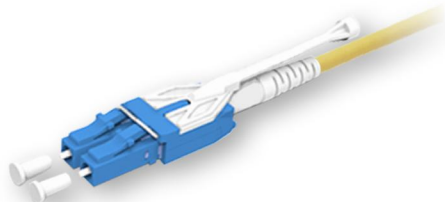
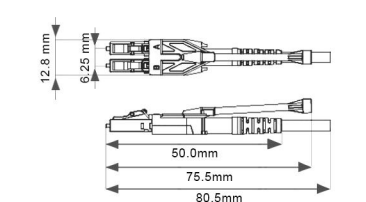
Function		Push-Pull	Switchable Polarity
Type	Matching the cable OD	Picture	Engineering Drawing
Style 2	2.0/3.0mm		

Function		Push-Pull	Switchable Polarity
Type	Matching the cable OD	Picture	Engineering Drawing
Pull Tab	2.0mm		

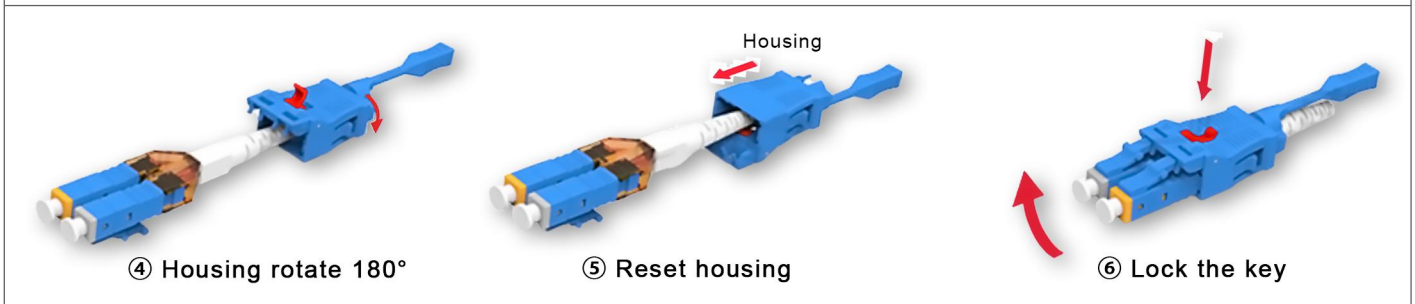
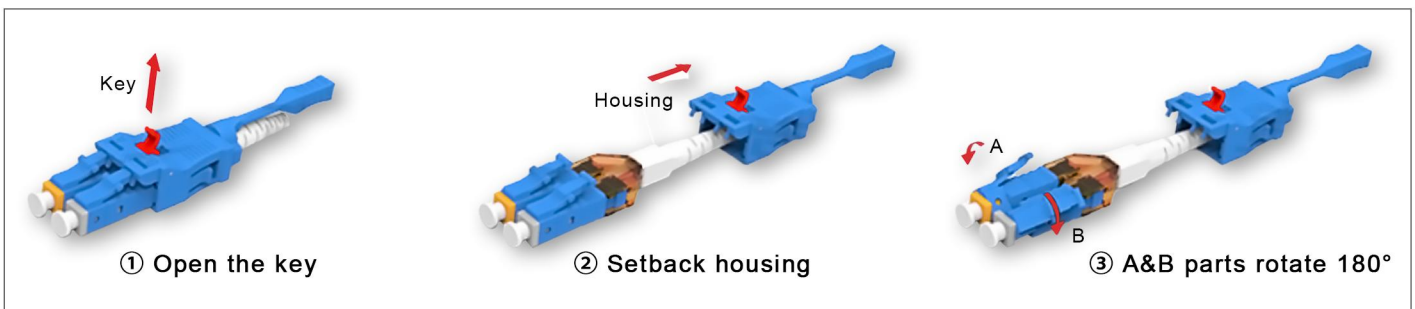
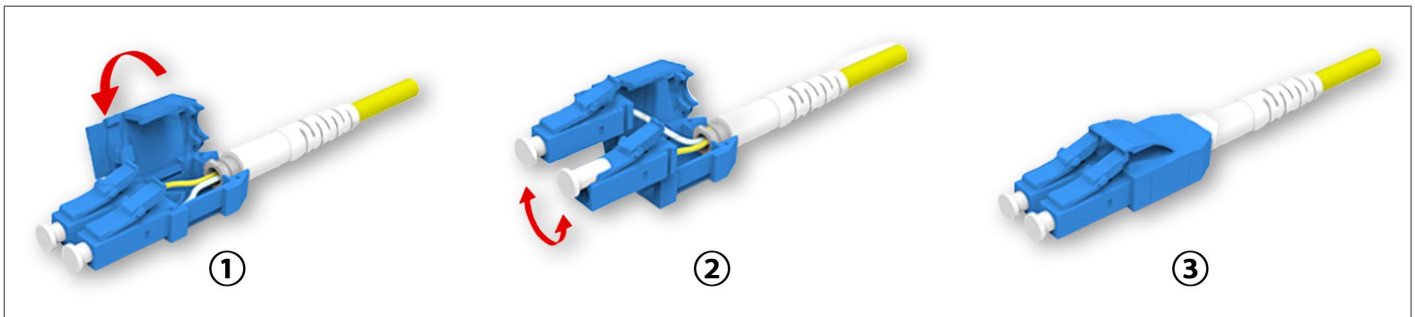
Function		Push-Pull	Switchable Polarity
Type	Matching the cable OD	Picture	Engineering Drawing
Push/Pull Tab	3.0mm		

ORDERING INFORMATION

Function		Push-Pull	Switchable Polarity
Type	Matching the cable OD	Picture	Engineering Drawing
Style 5	2.0/3.0mm		

Function		Push-Pull	Switchable Polarity
Type	Matching the cable OD	Picture	Engineering Drawing
Style 6	2.0/3.0mm		

POLARITY SWAP OPERATION DIAGRAM

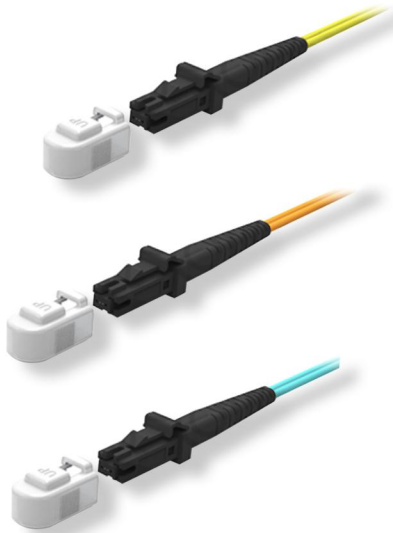


MTRJ CONNECTOR

CODE STANDARDS

MT2-BK-D09-BK

CONNECTOR		ENCLOSURE COLOR		BOOT TYPE(mm)		BOOT COLOR	
MT2	2-fibre MTRJ connector	BK	BLACK	B18	Flat-tailed 1.8 × 3.6	BK	BLACK
MT4	4-fibre MTRJ connector			Y30	3.0 Round Tail		



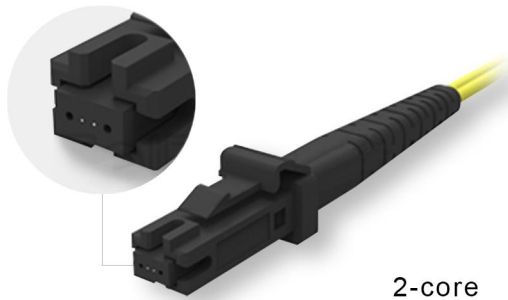
MTRJ Connector

Performance:

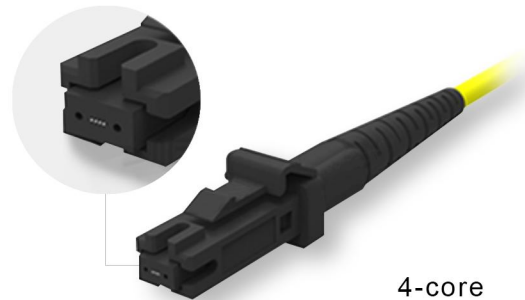
- Sun Conec's connectors strictly follow the test standards of Telcordia GR-326-CORE.
- Designed to exceed the requirement of Verizon FOCTPR 9409 requirements.
- The dimensional design complies with IEC 61754-24.
- Can be selected according to the material to meet the UL94 flame retardant standards.
- The use of our different ferrule types (Premium, Super Premium, Ultra Premium) enables performance matching from standard to high and ultra-high performance interconnection requirements.
- Insertion/return loss performance not only exceeds the top 10% of industry benchmarks, but also far exceeds the performance requirements of the Grade B interchange test in the IEC 61753-1 standard.

PRODUCT SELECTION

STRUCTURE



2-core



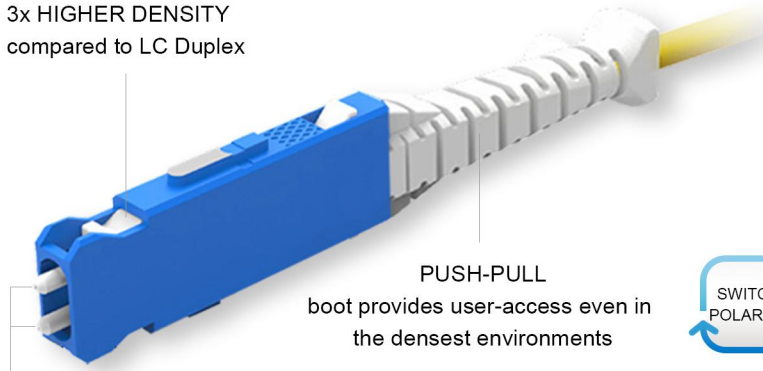
4-core

ADAPTED CABLE OD	BOOT TYPE	PICTURE	ENGINEERING DRAWING
1.8x3.6mm	Flat Terminal for 2x1.8mm Tight-Buffered Fiber Optic Cable		
3.0mm	Round Terminal for 3.0mm Tight-Buffered Fiber Optic Cable (Single Tube, 2 or 4 Fibers)		

SN CONNECTOR

The SN connector has an integrated 'push-pull' boot that simplifies insertion and removal of the connector even in dense patch panels where finger access is limited. A gang-clip can be added to four individual SN connectors allowing them to be patched simultaneously to either adapters or 4-channel (8 fibers) transceivers (subject to product selection).

3x HIGHER DENSITY compared to LC Duplex



PUSH-PULL boot provides user-access even in the densest environments



2X 1.25MM CERAMIC FERRULES providing carrier grade reliability and performance



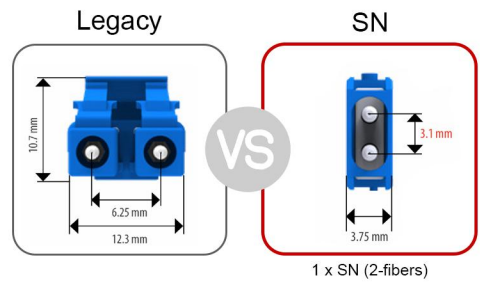
APC OPTION AVAILABLE



PRE-ASSEMBLED KIT



GANG CLIP COMPATIBLE

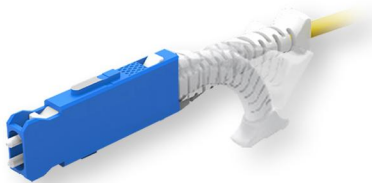


OPTICAL DATA

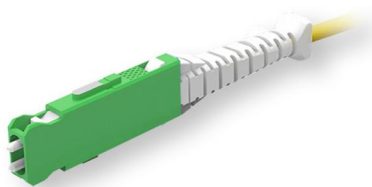
CODE STANDARDS

SNA-BU-D20-WH

CONNECTOR		ENCLOSURE COLOR		BOOT TYPE(mm)		BOOT COLOR	
SNA	SN/APC connector	BU	BLUE	D20	1.6-2.0 Push-Pull Standard	WH	WHITE
SNU	SN/UPC connector	GN	GREEN				
		AQ	AQUA				



SN Connector UPC with Flex Angle Boot



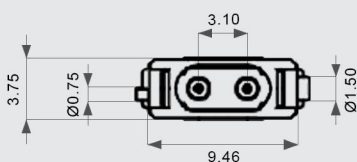
SN Connector APC for 1.6mm/2.0mm Cable

Performance:

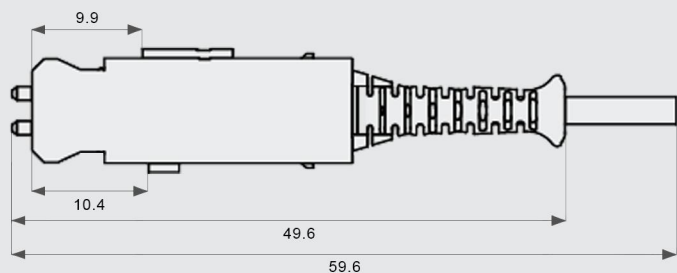
- Sun Conec's connectors strictly follow the test standards of Telcordia GR-326-CORE
- Designed to exceed the requirements of Verizon FOCTPR 9409
- The dimensional design complies with IEC 61754-13
- Unique push-pull boot for simple installation and removal
- The use of our different ferrule types (Premium, Super Premium, Ultra Premium) enables performance matching from standard to high and ultra-high performance interconnection requirements
- IEC random mating Grade B
- Effective size reduction compared to LC Duplex

1-CHANNEL CONNECTOR DRAWING

Front View

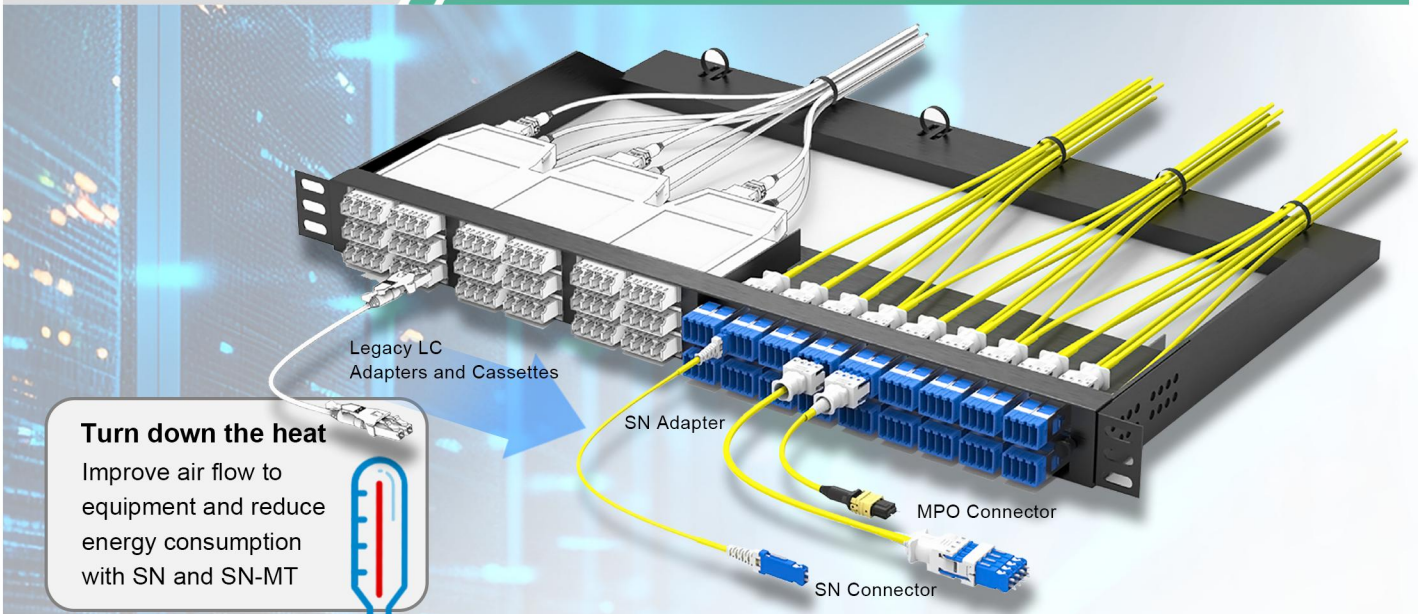


Side View



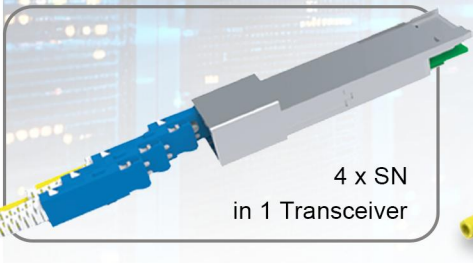
Note: All dimensions are in mm

DISTINCTIVE ADVANTAGES

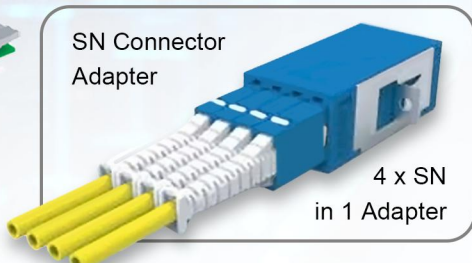


Turn down the heat

Improve air flow to equipment and reduce energy consumption with SN and SN-MT



4 x SN
in 1 Transceiver



SN Connector
Adapter

4 x SN
in 1 Adapter

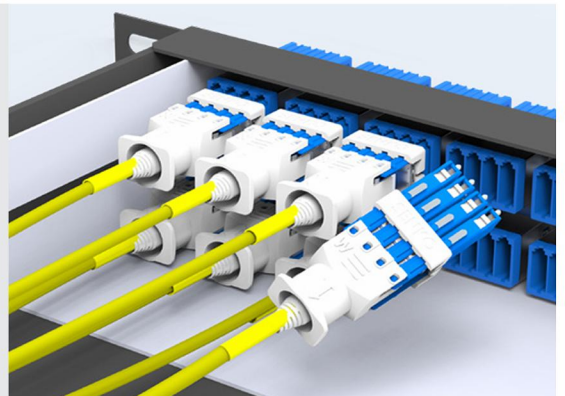


Flex-Angle
Boot

SN APPLICATION GUIDE

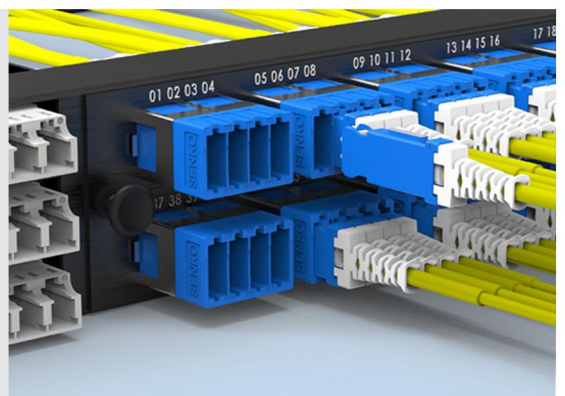
Structured Cabling

The SN Uniboot connector stands out as an ideal solution for constructing high-density, Base-8 structured networks. It significantly accelerates deployment while drastically cutting down cable clutter. For alternative setups, the SN Standard connectors can be efficiently grouped with a dedicated plastic clip, and breakout cables or fanout assemblies can be implemented in a similar streamlined manner.

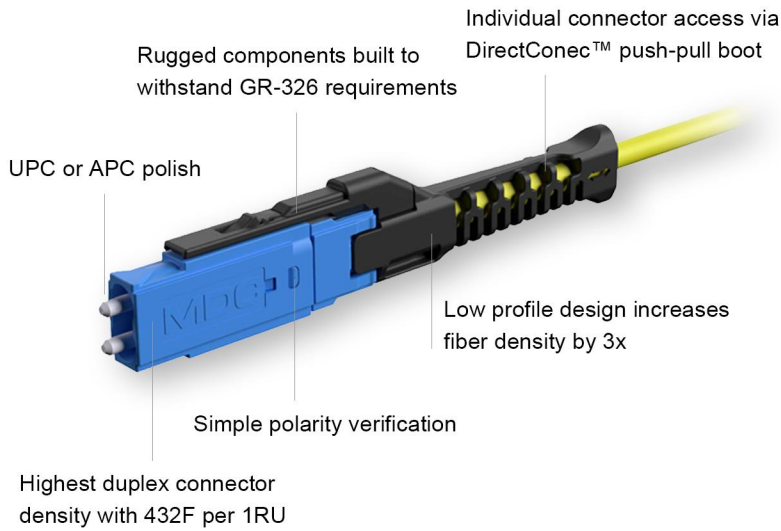


Individual SN Patching

For reliable front-side patching to panels and transceivers, the SN Standard series delivers proven performance and durability. In scenarios requiring field-configurable connectivity, polarity-reversible designs offer unique flexibility, allowing real-time adjustments without retermination—saving time and reducing deployment errors in high-density environments.



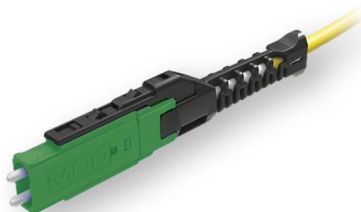
MDC CONNECTOR



MDC is a duplex connector manufactured using the industry-standard 1.25mm ferrule technology of LC connectors. A triple-port MDC adapter can be installed directly into the standard panel cutout for a duplex LC adapter, tripling fiber density. It supports emerging transceiver Multi-Source Agreement (MSA) port breakout architectures. Its compact size enables a single transceiver to accept multiple MDC patch cords, which can be individually accessed directly at the transceiver interface. It supports up to four independent MDC cables (in QSFP form factor) and two independent MDC cables (in SFP form factor).

OPTICAL DATA

CODE STANDARDS



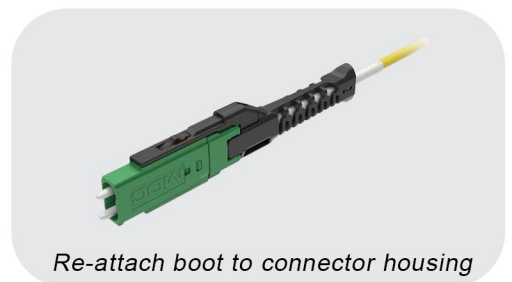
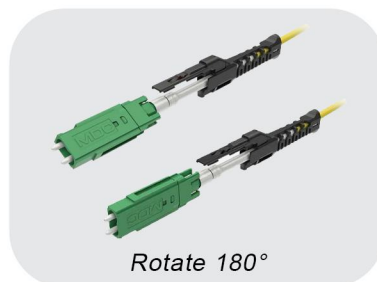
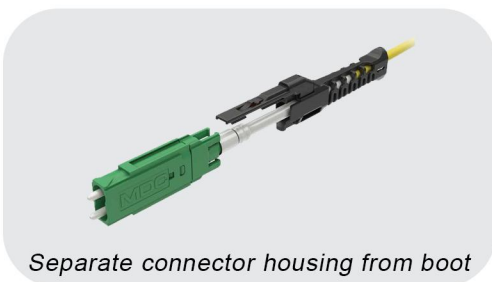
MD/APC-BU-D20-BK

CONNECTOR		ENCLOSURE COLOR		BOOT TYPE(mm)		BOOT COLOR	
MD/UPC	MD/UPC connector	BU	BLUE	D20	2.0 End Standard	BK	BLACK
MD/APC	MD/APC connector	GN	GREEN				
		AQ	AQUA				

Performance:

- 3x fiber cabling density over LC connectors, providing 216 duplex connectors (432 fibers) within 1 RU.
- DirectConec™ push-pull boot for effortless connector insertion and extraction.
- Simple polarity reversal with no exposed fibers.
- Meets IEC Attenuation Grade B random mating requirements (0.12 dB mean, 0.25 dB maximum for ≥ 97% of the connectors).
- Telcordia GR-326 and TIA-568 compliant.
- Designed for cables up to 2.0mm OD.
- Multi-mode, Singlemode and Singlemode APC available.

POLARITY REVERSAL PROCESS



Quick and Simple Polarity Reversal

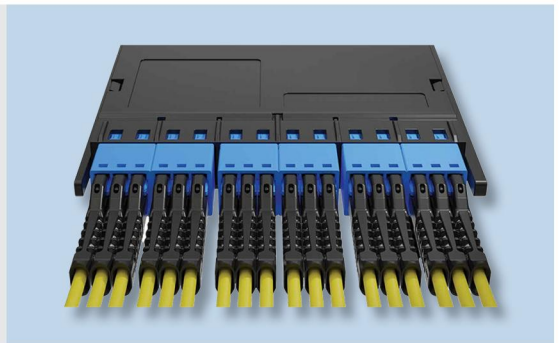
The polarity reversal of the MDC connector is effortless and does not expose or twist delicate fibers during the process. To change polarity, pull the boot from the connector housing, rotate the boot 180 degrees, and reassemble the boot assembly back onto the connector housing. Polarity marks on the top and side of the connector and the MDC logo provide notification of reversed connector polarity.

DISTINCTIVE ADVANTAGES

Triple Density in the Same Space
MDC delivers 3x the fiber density of LC duplex in one rack unit—432 fibers vs. 144—using identical panel space. Maximize capacity, minimize footprint.

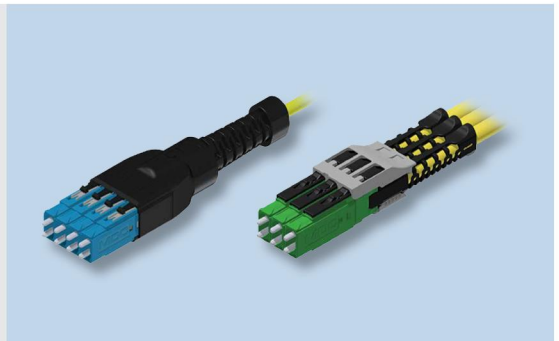
Ensuring Unimpeded Access in Ultra-Dense Deployments

Featuring an intuitive push-pull boot design, the MDC connector allows for smooth insertion and extraction even in tightly packed panels. The flexible yet robust boot maintains cable bend radius compliance and eliminates buckling during operation, ensuring reliable performance without disrupting adjacent links.



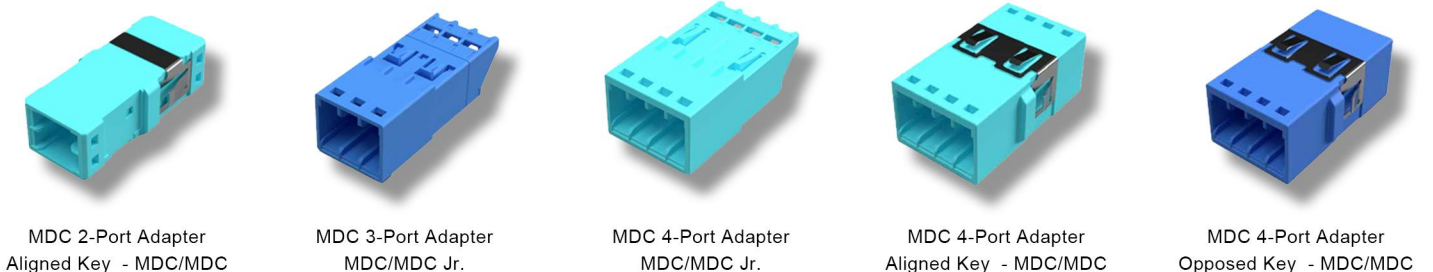
Aggregation Solutions

Combining multiple connectors together as one unit reduces the number of connections and helps provide immediate identification of cable groupings. SUN CONEC offers several aggregation solutions including clips and consolidated connectors.

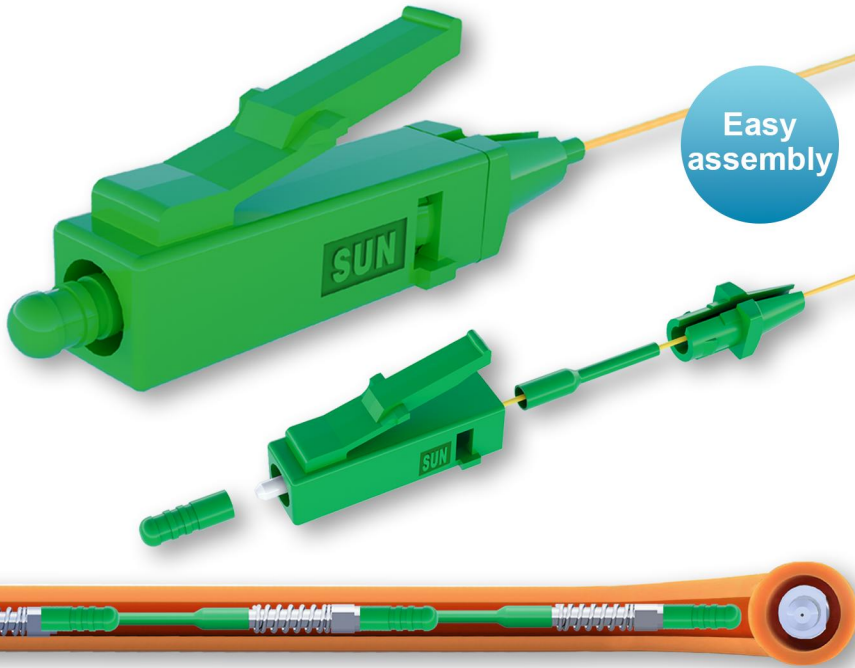


VARIETY OF ADAPTERS

SUNCONEC's 2-port and 3-port MDC adapters fit standard LC panel openings, instantly doubling or tripling port density without rack modification.



LC-WHOOSH CONNECTOR



SUN CONEC's LC-WHOOSH Connector is designed to be air-blown through micro-ducts for fast pre-connectorised FTTH drop applications. The connector's ferrule is blown through the duct before the outer housing and boot are assembled.

Performance:

- **Fast Installation**
Connector housing can be assembled in less than 15s
- **Tensile strength**
400N
- **High Performance**
Unique design achieves and maintains Grade B optical performance
- **User-Friendly**
reel packaging is convenient to access and install
- All products can meet random mating Grade B (IEC 61300-3-34)

OPTICAL DATA

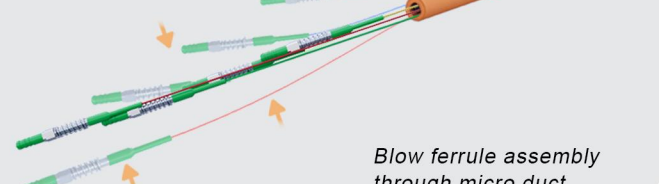
	Value
Single-core Outer Diameter	≤ 2.5mm
Combined Outer Diameter Of 4 LC Connectors	≤ 3.0mm
Pass Through A Minimum Inner Diameter	≥ 4.0mm
REACH Compliance	Yes
Free of Halogen	Yes
Humidity Resistance	95%

HOW TO INSTALL

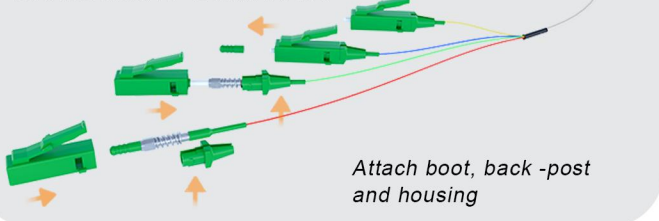
1. Blow



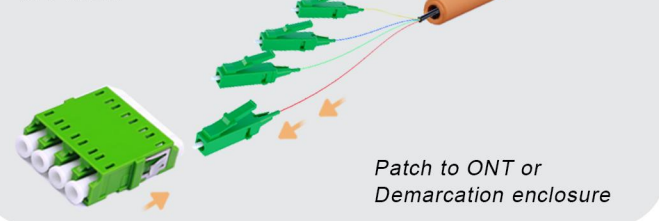
2. Assemble



3. Assemble Connector



4. Patch



Super fast, high performance connector for FTTH DUCT and DROP applications.

LC-ENT CONNECTOR



Performance:

- **Fast Installation**
Easy and fast assembly without special tools
- **High Performance**
Unique design achieves and maintains Grade B optical performance
- **User-Friendly**
reel packaging is convenient to access and install
- Cost effective
- Easy handling after termination due to connectorization directly to cable
- All products can meet random mating Grade B (IEC 61300-3-34)

Compatible with tubes of ID: 5mm



Fast Installation

connector housing can be assembled in less than **10s**



Tensile Strength

100N
(with pulling connector)



High Performance

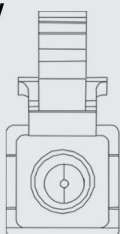
Unique design achieves **Grade B** optical performance

OPTICAL DATA

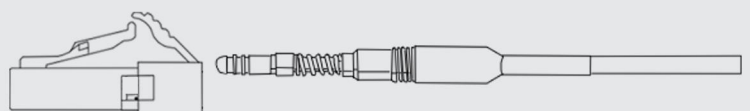
	Value
Outer Diameter	≤ 2.5mm
Inner Diameter	≤ 3.0mm
Insertion Loss (dB)	Typical ≤ 0.3
Return Loss	Typical ≥ 45
Operating Temperature	-40°C~+75°C
Humidity Resistance	95%
REACH Compliance	Yes
Qualification	TIA/EIA 568-B.3

1-CHANNEL CONNECTOR DRAWING

Front View



Side View



Note: All dimensions are in mm

WEATHERPROOF CONNECTOR

Rugged designs compliant with GR-3120 and IEC 61753



Blind mating features on housing prevent ferrule contamination and damage



Indoor/outdoor applications



Cost effective



Reduce installation time



Easy assembly

The Weatherproof Connector is SUN CONEC's flagship connectivity solution designed for outdoor applications and harsh environments. The high optical performance is paired with ergonomic mechanics for quick and easy installations.

Performance:

- IP water immersion and dust protection for harsh environment
- Cost-effective solution for in-house termination
- Chemical Resistance
- Easily adapts to both wall-penetration and butt-joint applications
- The spiral bayonet design provides a lasting and reliable connection
- Rugged designs compliant with GR-3120 and IEC 61753



Withstand the Elements

OPTICAL DATA



Quick Installation

The guiding mechanism has a blind mating function, allowing for a simple and fast connection installation.



Flexible Termination, High Strength

This connector can withstand a pull force of 450N (100lbf), making it suitable for FTTH, FTTA, and a wide range of other demanding applications.



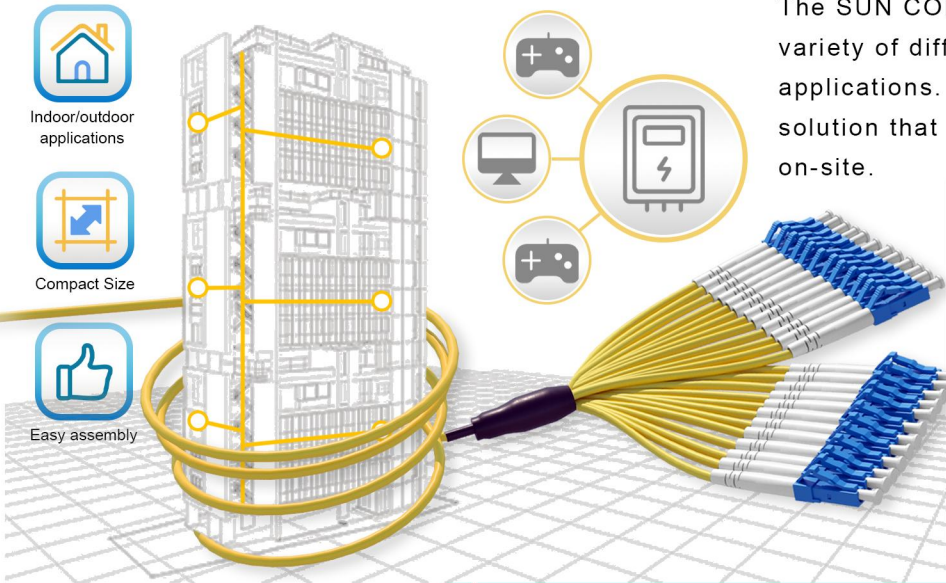
Sealed Design

Features such as waterproofing, dust resistance, and corrosion resistance meet the IP67 protection level.

	PICTURE	ENGINEERING DRAWING
Docking Scene Status		
State Transition Process		Replace the wall-penetrating cap to easily switch between wall-penetrating and docking scenario applications.

INDOOR FAN-OUT KIT

The SUN CONEC Indoor fan-out range offer a variety of different layout options for most indoor applications. They are cost-effective, time saving solution that eliminates the need for splicing on-site.



Performance:

- For indoor breakout applications
- Light Weight, Snap-together Molded Construction
- Maximum Fan-Outs According to Media Type(x48)
- High-performance low loss
- Chemical Resistance

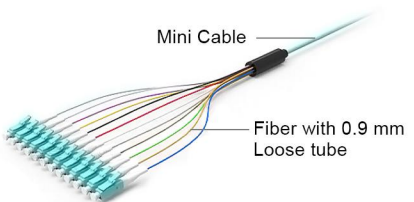
OPTICAL DATA

SPECIFICATIONS

Mounting	Hose Clip / Cable Tie
Number of Fibers	12 to 288 (Note: According to Media Type 2.0mm or 900um)
Suitable for Connector Types	LC, SC, FC, ST, MU
Dimensions	56mm x 15mm (Excluding cable gland)
Feeder Cable OD range	2-6mm
Operating Temperature (°C)	-40 to +85
Fan-out cable Retention	>15lbs (>66N)
Feeder Cable Retention	100lbs (450N)

BRANCH STRUCTURE DISPLAY

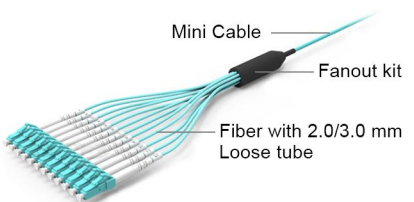
Mini Round Cable



Mini Cable

Fiber with 0.9 mm Loose tube

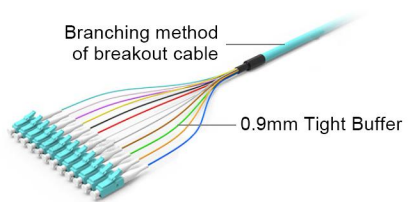
Mini Round Cable



Mini Cable

Fiber with 2.0/3.0 mm Loose tube

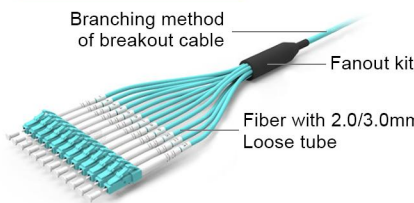
Breakout Cable



Branching method of breakout cable

0.9mm Tight Buffer

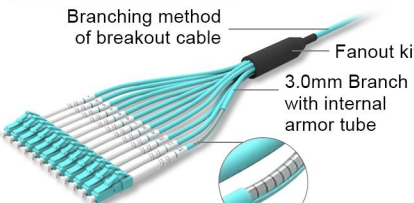
Breakout Cable



Branching method of breakout cable

Fiber with 2.0/3.0mm Loose tube

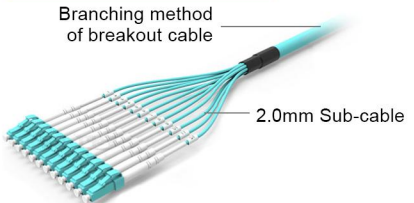
Breakout Cable



Branching method of breakout cable

3.0mm Branch with internal armor tube

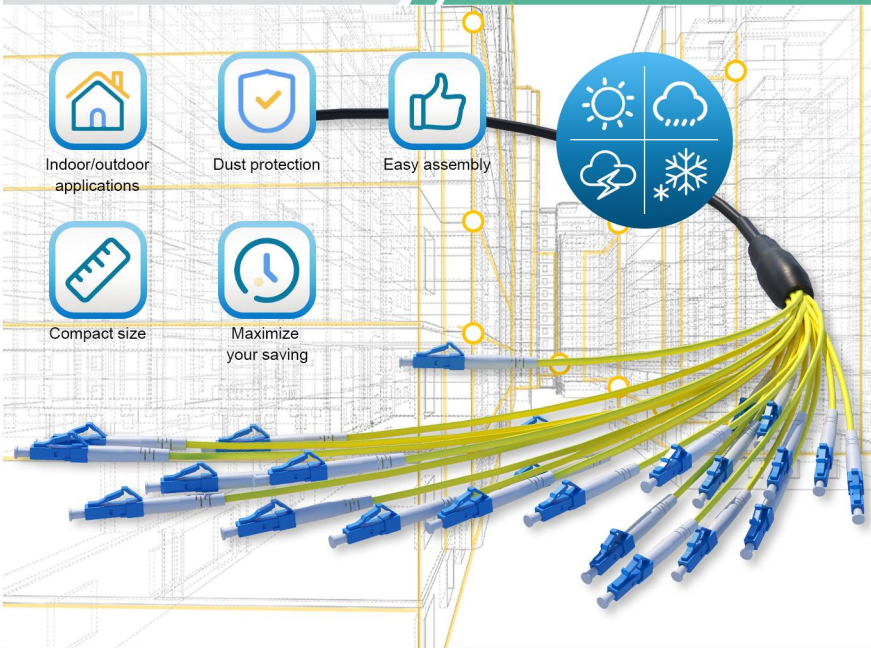
Distribution Cable



Branching method of breakout cable

2.0mm Sub-cable

OUTDOOR FAN-OUT KIT



The SUN CONEC Outdoor fan-out range offers a variety of different layout options for most indoor applications. They enable less cabling and lower costs, allowing for quick and cost-effective installation.

Performance:

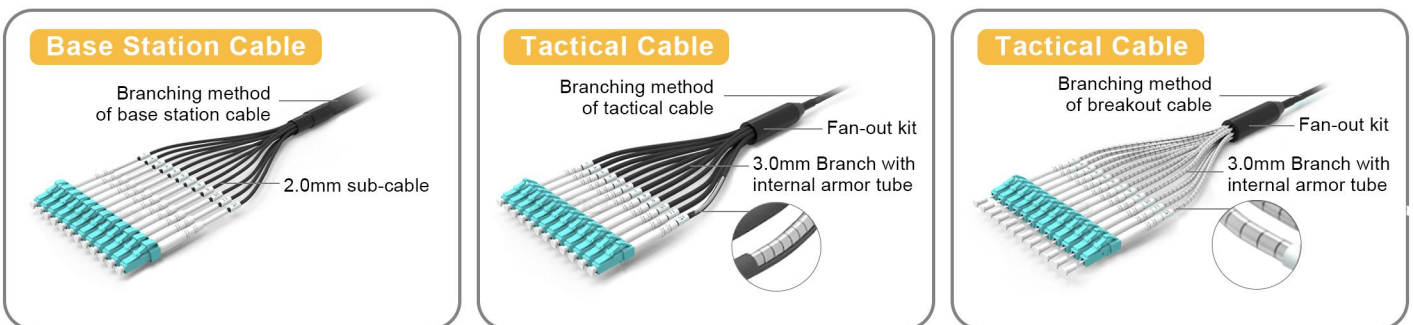
- Compact Size
- Easy Assembly
- Light Weight, snap-together molded construction
- For outdoor breakout applications
- UV resistance for outdoor applications
- High performance low loss
- Chemical resistance

OPTICAL DATA

SPECIFICATIONS

Mounting	Hose Clip / Cable Tie
Number of Fibers	12 to 288 (Note: According to Media Type 2.0mm or 900µm)
Suitable for Connector Types	LC, SC, FC, ST, MU
Dimensions	56mm x 15mm (Excluding cable gland)
Feeder Cable OD range	2-6mm
Operating Temperature (°C)	-40 to +85
Fan-out cable Retention	>15lbs (>66N)
Feeder Cable Retention	100lbs (450N)

BRANCH STRUCTURE DISPLAY



SUN CONEC

-Singapore & Malaysia-



Sale and Service

"Integrity in Sales, Excellence in Service."

Trust is the foundation of our growth. By prioritizing superior quality and responsive service, we build lasting relationships with our clients.

Our unwavering commitment:

"To cooperate sincerely and share prosperity with all partners."

Rontaray Ningbo

Headquarters / RD Center
Ferrule & Sleeve Factory
Email:info@rontaray.com

Rontaray Hunan

Assembly Factory
Patch cord/MPO/Fast connector
Email:info@rontaray.com

Sunconec Singapore

Sales Company
Email:official@sunconec.com

Sunconec Malaysia

Ferrule & Sleeve Factory
Medical optical imaging/MT Ferrule
Email:official@sunconec.com

WWW.RONTARAY.COM
WWW.SUNCONEC.COM